

HJC

HIGHER VALUES



Williams Grove

Surbiton, KT6 5RN

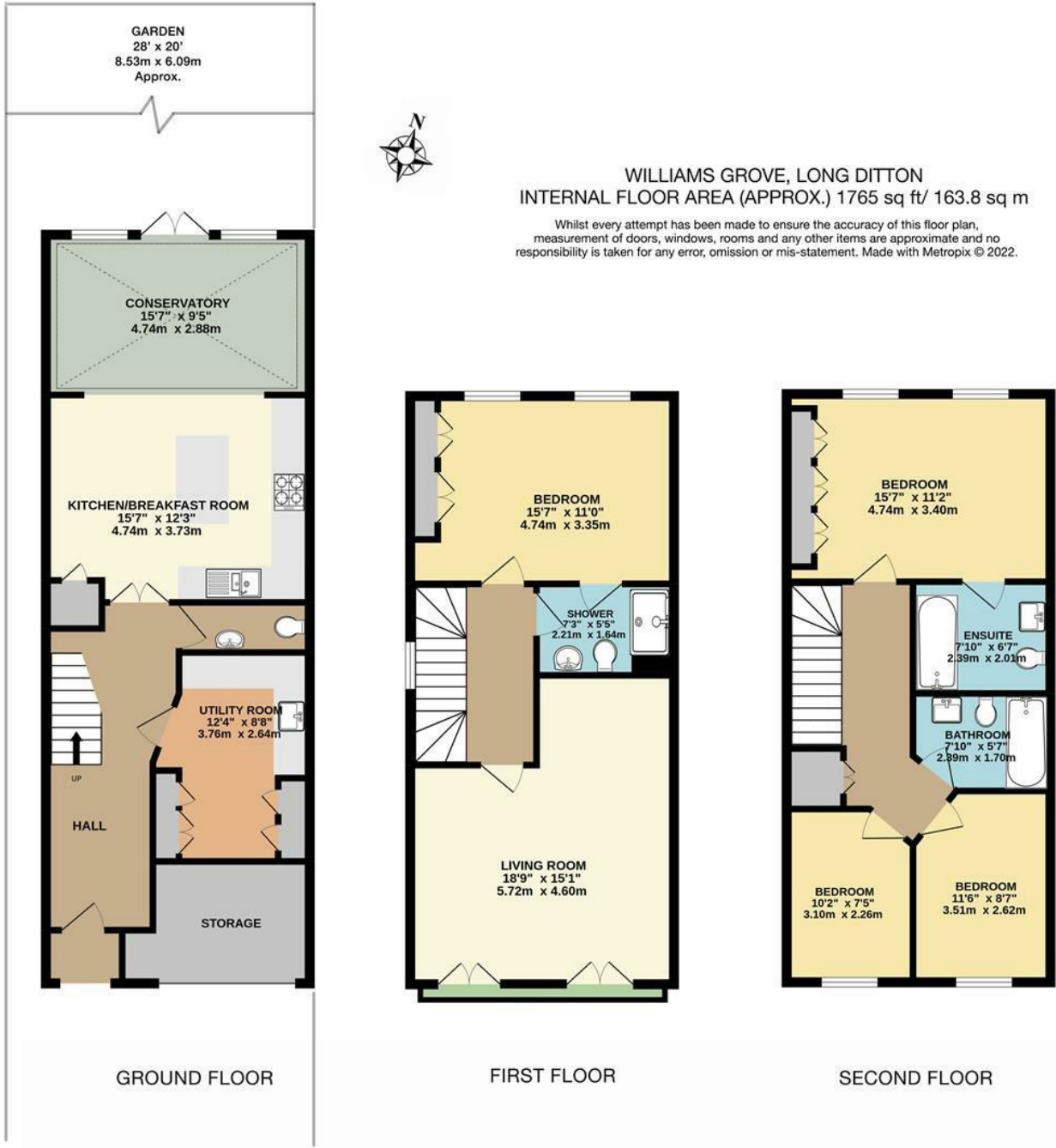
Guide Price

£1,075,000

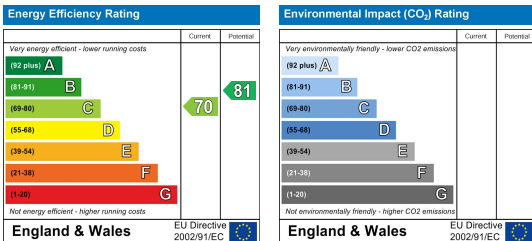
Set on the prestigious St James Development rarely available is this larger than average stunning end of terrace town house. With a great position, off street parking for two cars and private side access to the garden. The accommodation on the ground floor includes a large entrance hall, excellent utility room leading into further storage from a converted garage, downstairs cloakroom, large kitchen/diner with french doors leading out onto garden with summer house. To the first level features a large double bedroom, bathroom, living room with 2 sets of french doors both with Juliette balcony. To the second level is the main bedroom with en-suite, two further bedrooms and family bathroom. This truly is a lovely family home, close to Surbiton Station, River and parks.

- Large end of Terrace Town House
- Spacious Kitchen/dining room
- En-suite to main bedroom
- Large Utility Room
- Off street parking for 2 cars
- Prestigious St James development
- Downstairs cloakroom
- 3 Further Bedrooms and 2 Further Bathrooms
- Garden with Summer House
- No onward chain

Floor Plan



Energy Efficiency Graph



These particulars, whilst believed to be accurate are set out as a general outline only for guidance and do not constitute any part of an offer or contract. Intending purchasers should not rely on them as statements of representation of fact, but must satisfy themselves by inspection or otherwise as to their accuracy. No person in this firm's employment has the authority to make or give any representation or warranty in respect of the property.