

HJC

HIGHER VALUES



Maple Road

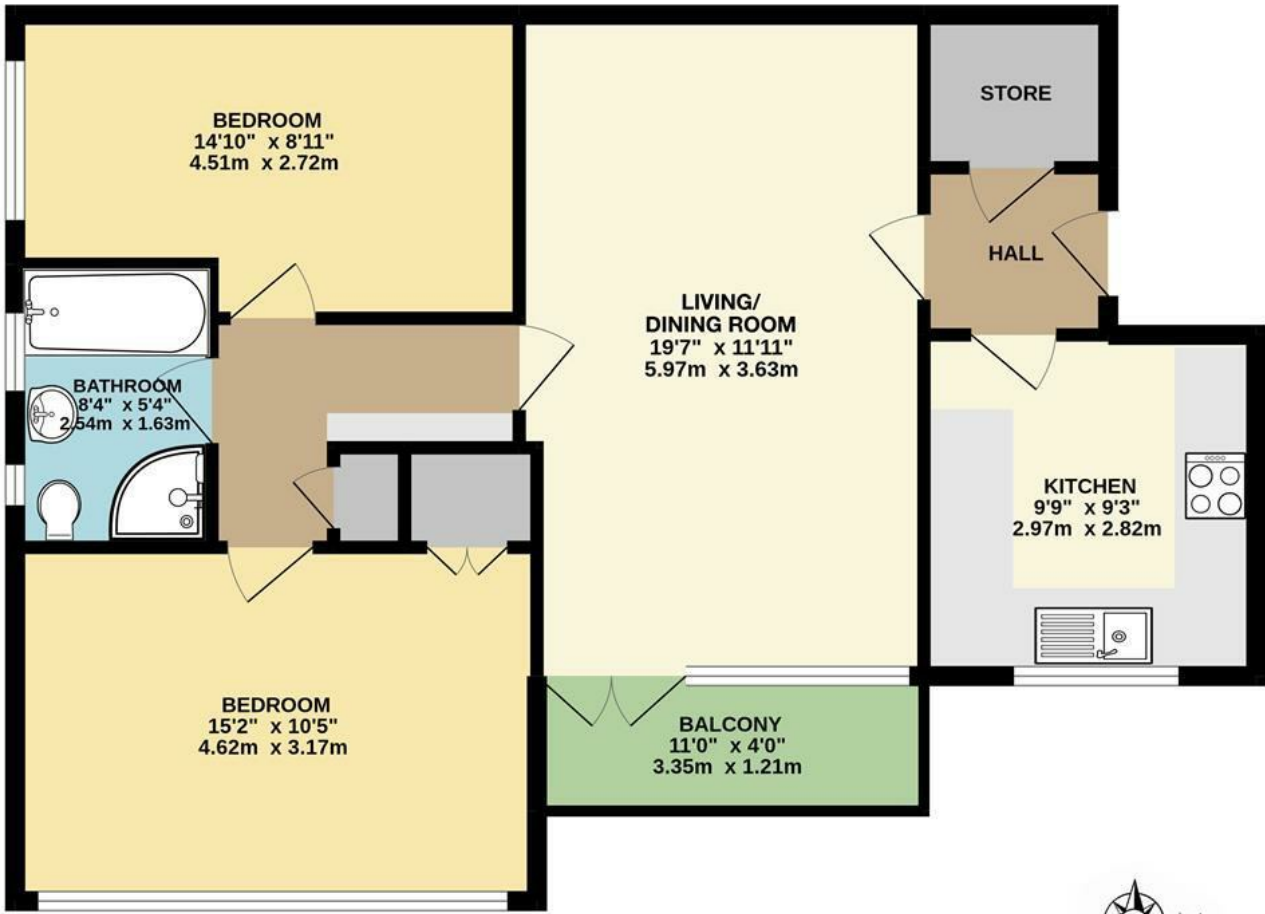
Surbiton, KT6 4AZ

Asking Price £485,000

A spacious and well presented two double bedroom first floor purpose built flat situated in the extremely popular Maple Road area of Surbiton. The flat features a fitted kitchen, a large storage room in the entrance hall, leading through to the spacious living/dining room. French doors opening onto the private balcony, with room for a bistro table and chairs. Modern bathroom, featuring quadrant shower, separate bath, WC and vanity unit. Two large Double Bedrooms, Double Glazing throughout. The property also benefits from tranquil communal gardens to the rear. All within walking distance to The River, Town, Station, highly regarded schools. You are spoilt for choice with local eateries, pubs and independent boutiques. This flat has a share of freehold and 939 years remaining on the lease. Council Tax Band D. Annual Ground Rent £10 p.a Service Charges £1490 p.a

- Desirable Location in Surbiton
- Fitted Kitchen
- Private Balcony
- Large Bathroom
- Walking distance to River, Town, Station, Restaurants.
- 2 Double Bedrooms
- Spacious Reception/Dining room
- Lovely Communal Gardens
- Wooden Floors
- Share Of Freehold

Floor Plan

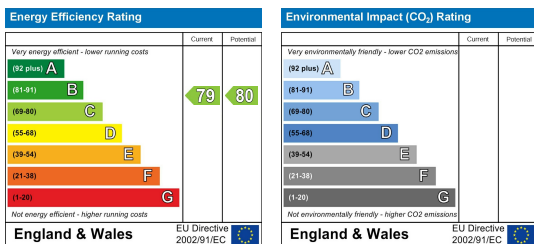


FIRST FLOOR FLAT

MAPLE ROAD, SURBITON
 INTERNAL FLOOR AREA (APPROX.) 775 sq ft/ 72.0 sq m

Whilst every attempt has been made to ensure the accuracy of this floor plan, measurement of doors, windows, rooms and any other items are approximate and no responsibility is taken for any error, omission or mis-statement. Made with Metropix © 2022.

Energy Efficiency Graph



These particulars, whilst believed to be accurate are set out as a general outline only for guidance and do not constitute any part of an offer or contract. Intending purchasers should not rely on them as statements of representation of fact, but must satisfy themselves by inspection or otherwise as to their accuracy. No person in this firm's employment has the authority to make or give any representation or warranty in respect of the property.