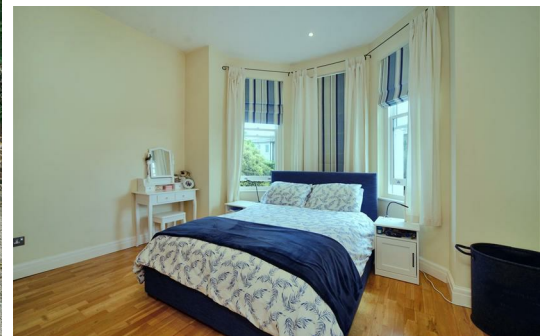


# HJC

HIGHER VALUES



## Grove Road

Surbiton, KT6 4DW

Guide Price £500,000

A fabulous conversion first floor apartment situated on a sought after River Road close to Surbiton station. The property has a large reception room, fitted kitchen, two fantastic bedrooms and bathroom. The apartment has great high ceilings and has the added benefit of a private allocated parking space. This property is also being sold with no onward chain and a Share of the Freehold. 900 plus year on lease, Council Tax Band D. Service charges £1764 p.a

- Character Conversion Flat
- Spacious Living Room with Bay Window
- Separate Kitchen
- Close to Surbiton Station
- No Onward Chain
- 2 Double Bedrooms
- High Ceilings
- River Road Location
- Private Allocated Parking
- Share of Freehold

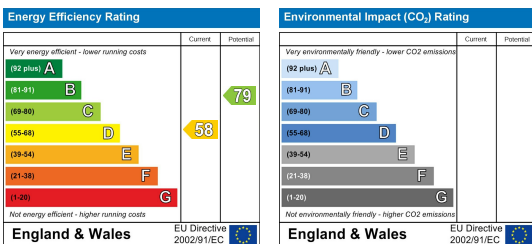
# Floor Plan



EGHAM COURT, SURBITON  
INTERNAL FLOOR AREA (APPROX.) 662 sq ft/ 61.2 sq m

Whilst every attempt has been made to ensure the accuracy of this floor plan, measurement of doors, windows, rooms and any other items are approximate and no responsibility is taken for any error, omission or mis-statement.  
Made with Metropix © 2022.

## Energy Efficiency Graph



These particulars, whilst believed to be accurate are set out as a general outline only for guidance and do not constitute any part of an offer or contract. Intending purchasers should not rely on them as statements of representation of fact, but must satisfy themselves by inspection or otherwise as to their accuracy. No person in this firm's employment has the authority to make or give any representation or warranty in respect of the property.