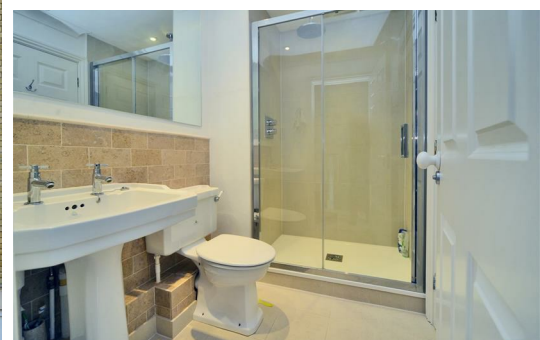


HJC

HIGHER VALUES



Williams Grove

Surbiton, KT6 5RN

Guide Price £995,000

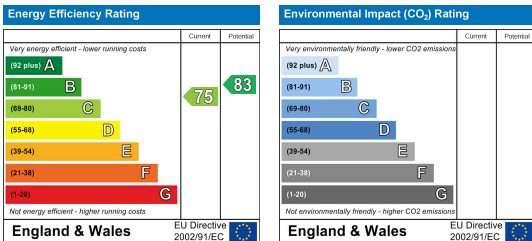
HJC are proud to present this stunning extended town house, set on the prestigious St James Development. The accommodation includes a spacious open plan kitchen/dining room with doors opening on to a pretty rear garden. Further benefits include master bedroom with ensuite, three further bedrooms, family bathroom, shower room, utility and downstairs WC. The property also benefits from gas central heating, underfloor heating on the ground floor and private driveway, walking distance to the Nuffield Gym, River Thames and Surbiton Station.

- Prestigious St James Development
- En-suites to both Double Bedrooms
- Utility
- Family Bathroom
- Close to Surbiton station
- 4 bedrooms
- Kitchen/Dining Room
- Downstairs WC
- Off Street Parking
- Close to the River Thames

Floor Plan



Energy Efficiency Graph



These particulars, whilst believed to be accurate are set out as a general outline only for guidance and do not constitute any part of an offer or contract. Intending purchasers should not rely on them as statements of representation of fact, but must satisfy themselves by inspection or otherwise as to their accuracy. No person in this firm's employment has the authority to make or give any representation or warranty in respect of the property.