

# HJC

HIGHER VALUES



## Malcolm Drive

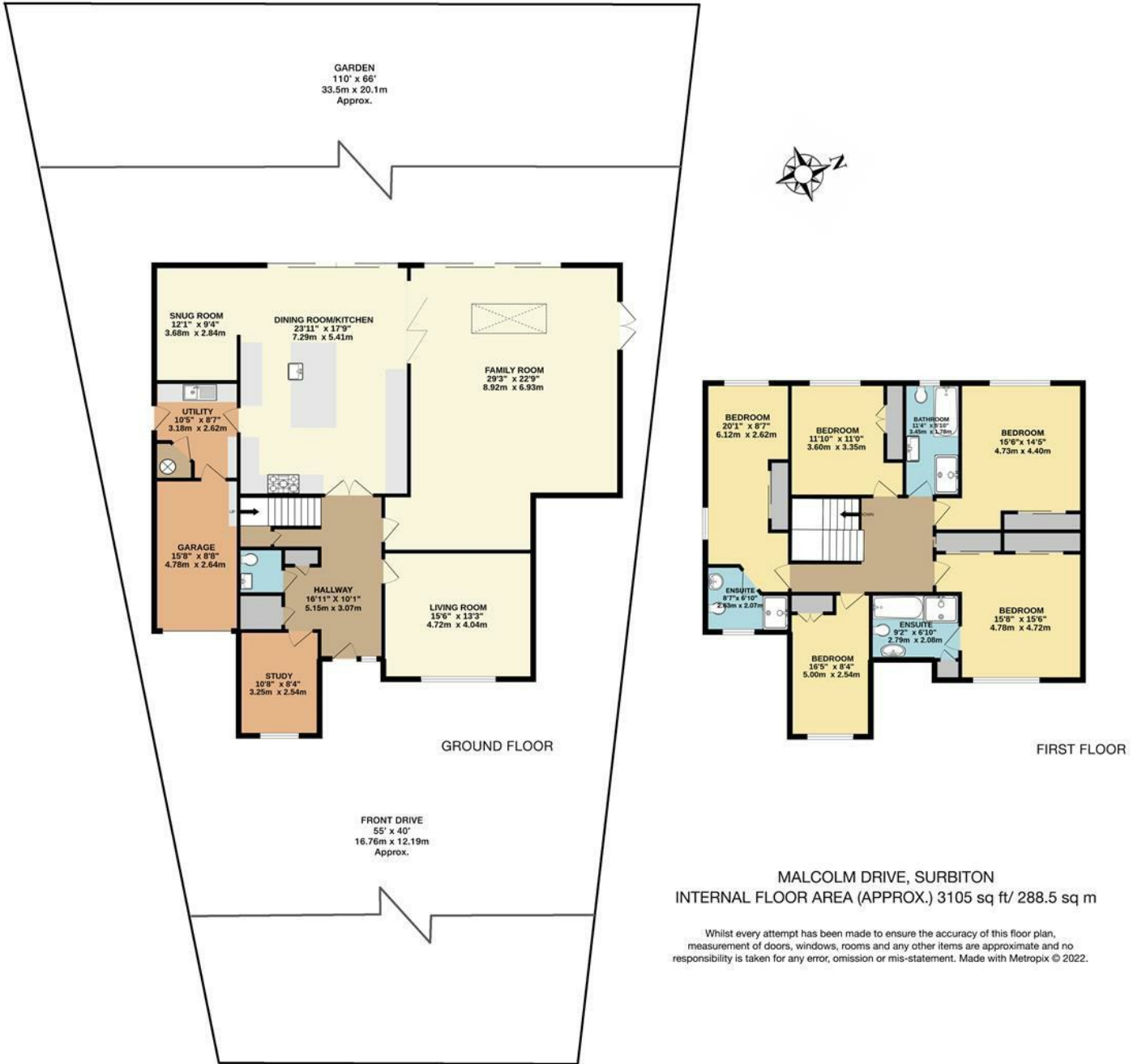
Surbiton, KT6 6QS

£1,995,000

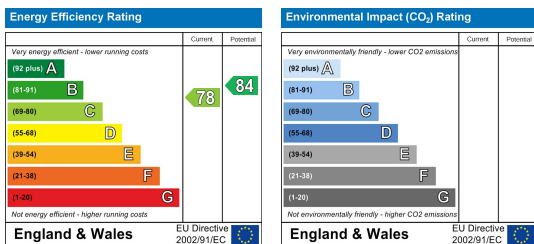
A rarely available superb detached family home located in a desirable part of Surbiton., situated at the end of a quiet cul-de-sac on the Southborough estate. This lovely home has been extended and renovated to a very high standard by the current owners, offering two reception rooms, five double bedrooms, three bathrooms and a large Kitchen with a dining and seating area. Fabulous sliding doors opening to a generous landscaped garden and patio, perfect for entertaining. Also featuring a separate Study, Utility, downstairs Cloakroom, integral garage, and plenty of storage throughout the property. With off street parking for several cars, this spacious detached home is perfect for family living.

- Detached 5 Bedroom family home
- 2 Spacious Reception Rooms
- Utility and downstairs WC
- Spacious Gardens and Patio area for entertaining
- Sought After Location
- 3 Bathrooms including 2 ensembles
- Kitchen/Dining/Family Room
- Study Room
- Garage and OSP Parking for several cars

# Floor Plan



## Energy Efficiency Graph



These particulars, whilst believed to be accurate are set out as a general outline only for guidance and do not constitute any part of an offer or contract. Intending purchasers should not rely on them as statements of representation of fact, but must satisfy themselves by inspection or otherwise as to their accuracy. No person in this firm's employment has the authority to make or give any representation or warranty in respect of the property.