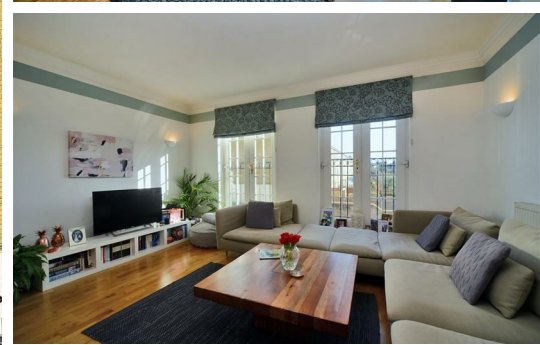


# HJC

HIGHER VALUES



## Chadwick Place

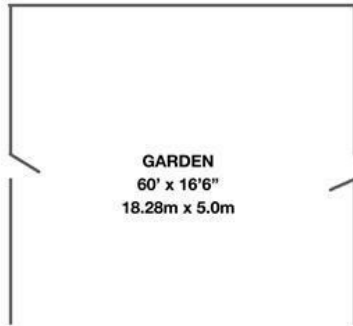
Surbiton, KT6 5RZ

Guide Price £975,000

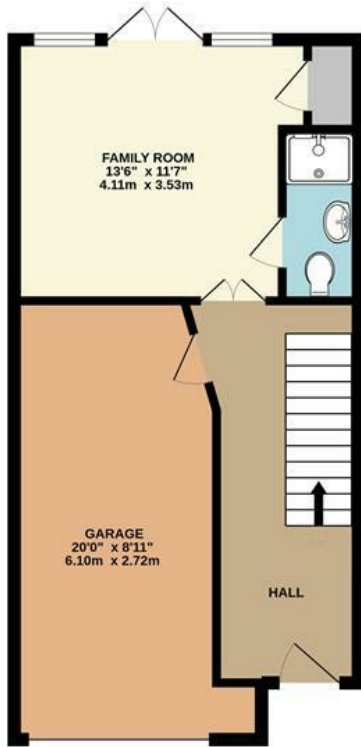
Set on the prestigious St James development we are delighted to offer this beautifully presented 4 Bedroom terraced townhouse with a generous garden. The accommodation to the ground floor includes a good-sized reception room, this could also be utilised as a bedroom which opens onto the garden. Plus, a shower room and integral garage with utility. To the first floor there is a very well-appointed kitchen, leading through to the dining area, which flows through to a spacious living room with double French doors opening to Juliette Balconies. The second floor features the main bedroom with ensuite shower room, two further bedrooms and a family bathroom.

- Prestigious St James development
- Downstairs shower room
- Generous Garden
- En-suite to main Bedroom
- Off Street Parking
- 4 bedrooms
- Integral Garage with Utility
- Spacious living room with French Doors
- Family Bathroom
- Walking Distance to River, Station, Town

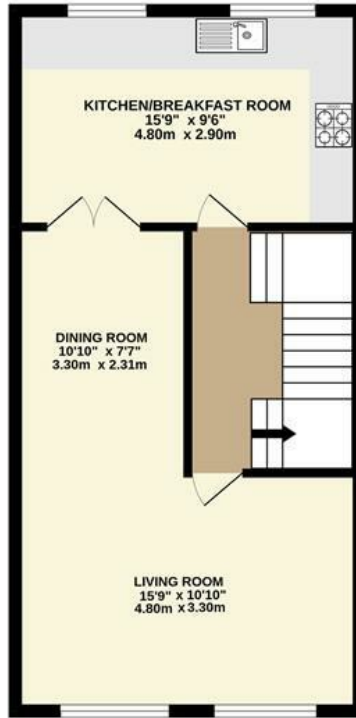
# Floor Plan



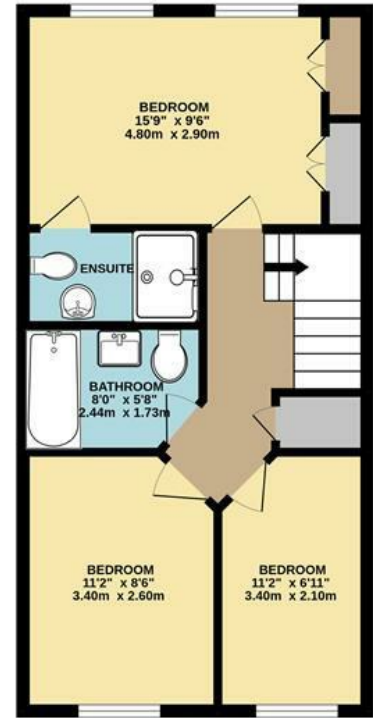
CHADWICK PLACE, LONG DITTON  
INTERNAL FLOOR AREA (APPROX.) 1480 sq ft/ 137.5 sq m



GROUND FLOOR



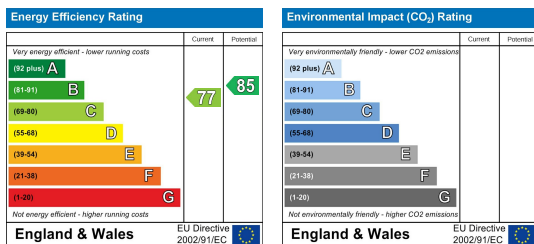
FIRST FLOOR



SECOND FLOOR

Whilst every attempt has been made to ensure the accuracy of this floor plan, measurement of doors, windows, rooms and any other items are approximate and no responsibility is taken for any error, omission or mis-statement. Made with Metropix © 2022.

## Energy Efficiency Graph



These particulars, whilst believed to be accurate are set out as a general outline only for guidance and do not constitute any part of an offer or contract. Intending purchasers should not rely on them as statements of representation of fact, but must satisfy themselves by inspection or otherwise as to their accuracy. No person in this firm's employment has the authority to make or give any representation or warranty in respect of the property.