

HJC

HIGHER VALUES



Effingham Road

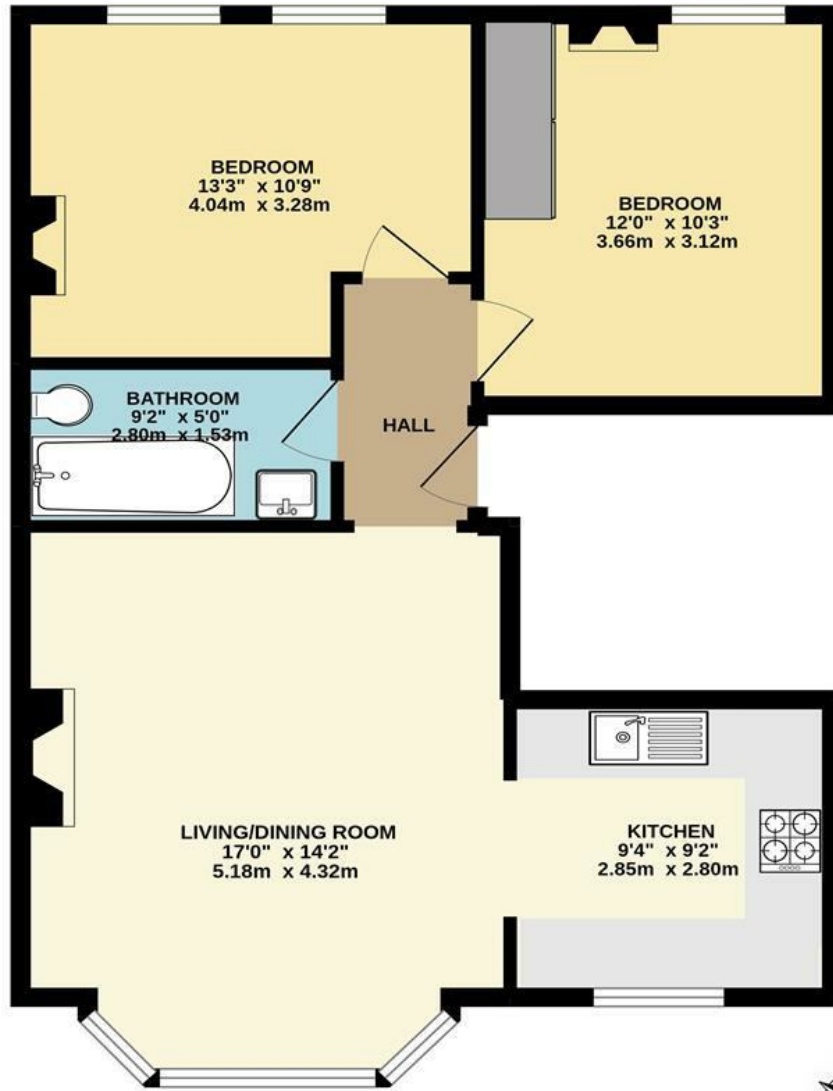
Surbiton, KT6 5JY

Guide Price £485,000

Lovely bright First Floor Conversion 2 Double Bedroom Flat with off street parking for one car. Located in a popular street in Surbiton close to Victoria Park. Walking distance to Surbiton town, River and Station. Modernised throughout, whilst retaining character features. Share of Freehold no onward chain

- Conversion First Floor Flat
- Spacious Reception Room
- Modern Bathroom
- Off Street Parking for One Car
- Walking Distance to Town, River, Station
- Modern Large Kitchen
- Feature Fireplaces
- 2 Double Bedrooms
- Share Of Freehold
- No Onward Chain

Floor Plan

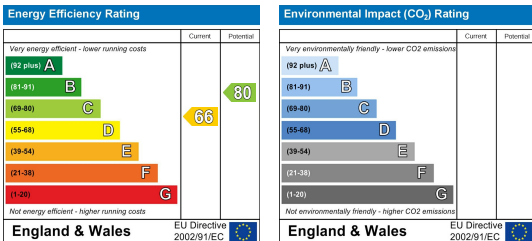


FIRST FLOOR MAISONETTE

EFFINGHAM ROAD, SURBITON
 INTERNAL FLOOR AREA (APPROX.) 645 sq ft/ 60.0 sq m

Whilst every attempt has been made to ensure the accuracy of this floor plan, measurement of doors, windows, rooms and any other items are approximate and no responsibility is taken for any error, omission or mis-statement. Made with Metropix © 2022.

Energy Efficiency Graph



These particulars, whilst believed to be accurate are set out as a general outline only for guidance and do not constitute any part of an offer or contract. Intending purchasers should not rely on them as statements of representation of fact, but must satisfy themselves by inspection or otherwise as to their accuracy. No person in this firm's employment has the authority to make or give any representation or warranty in respect of the property.