

# HJC

HIGHER VALUES



## Worthington Road

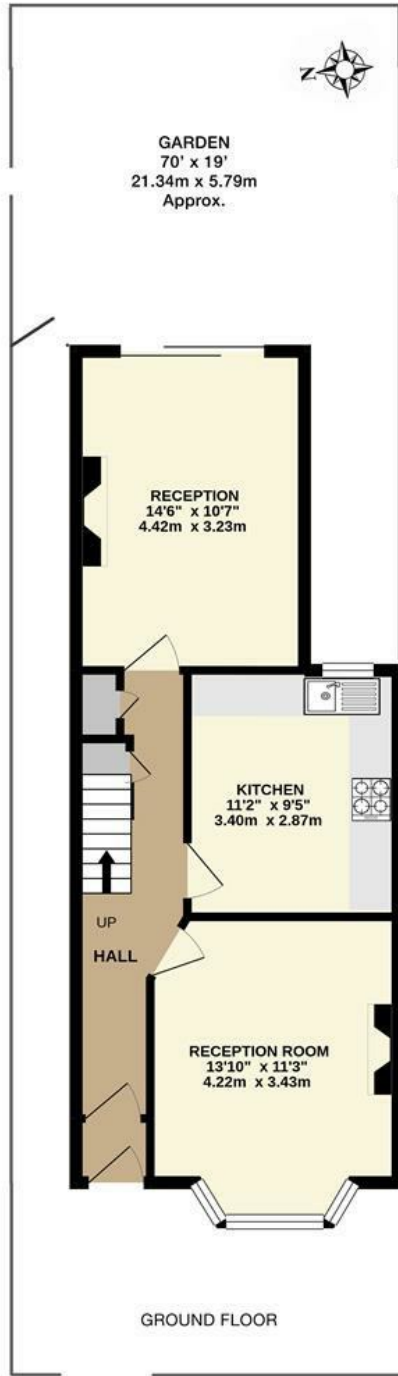
Surbiton, KT6 7RX

Guide Price £650,000

A cherished family home available to the market for the first time in over 60 years featuring 3 three Double Bedrooms, 2 Reception rooms, Separate Kitchen, Family Bathroom. Large garden featuring patio area, lawn, mature shrubs and flower borders. Would benefit from modernisation throughout, located on a sought after road within close proximity of Surbiton Town Centre and Mainline Station. No onward chain.

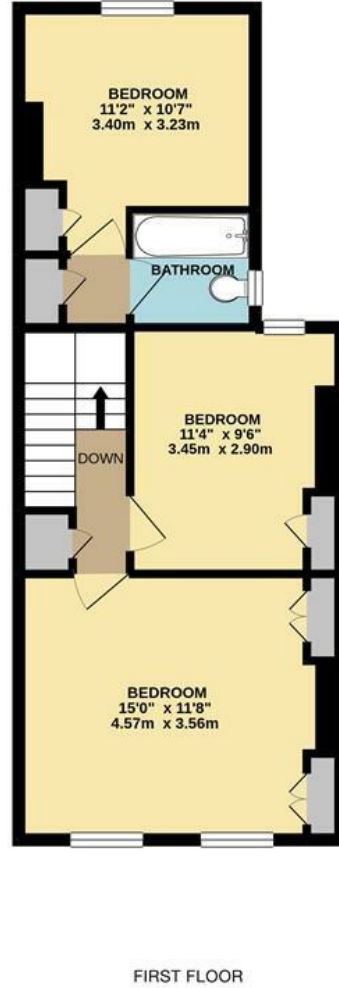
- 3 Double Bedrooms
- Separate Kitchen
- Large Garden
- Close Proximity to Surbiton and Mainline Station
- In Need of Modernisation
- 2 Reception Rooms
- Family Bathroom
- Side Access
- Sought After Location
- No Onward Chain

# Floor Plan

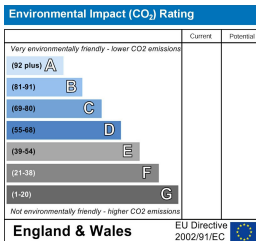
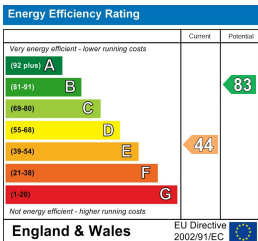


WORTHINGTON ROAD, SURBITON  
INTERNAL FLOOR AREA (APPROX.)  
985 sq ft/ 91.5 sq m

Whilst every attempt has been made to ensure the accuracy of this floor plan, measurement of doors, windows, rooms and any other items are approximate and no responsibility is taken for any error, omission or mis-statement. Made with Metropix © 2021.



## Energy Efficiency Graph



These particulars, whilst believed to be accurate are set out as a general outline only for guidance and do not constitute any part of an offer or contract. Intending purchasers should not rely on them as statements of representation of fact, but must satisfy themselves by inspection or otherwise as to their accuracy. No person in this firm's employment has the authority to make or give any representation or warranty in respect of the property.