

HJC

HIGHER VALUES



Lovelace Road

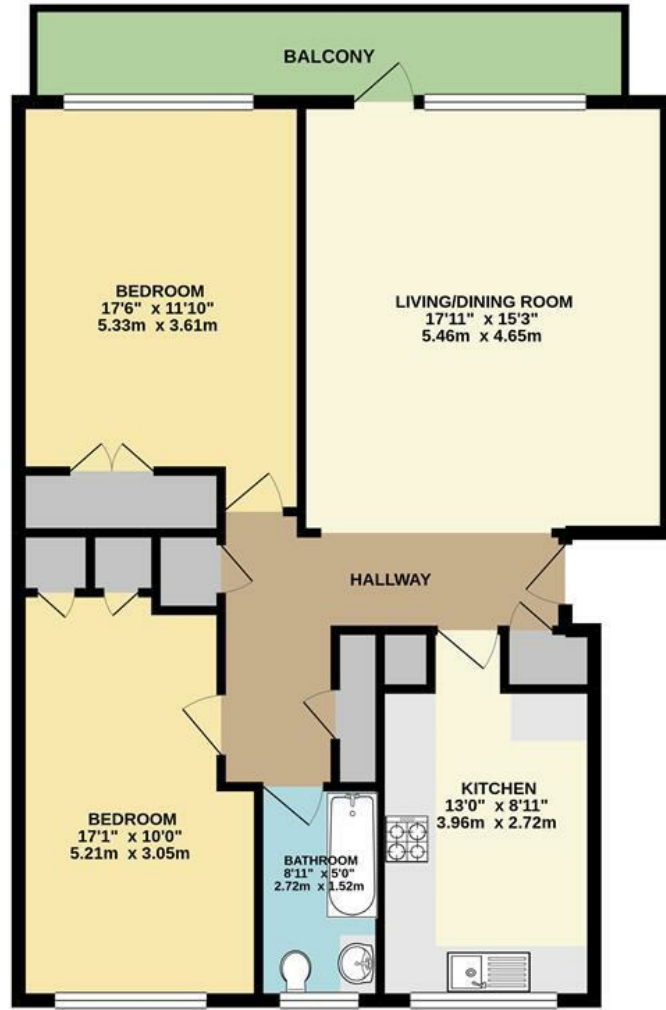
Surbiton, KT6 6NG

Guide Price £475,000

A spacious and well presented two double bedroom second floor purpose built flat situated in the extremely popular Lovelace area of Surbiton. The flat enjoys very generous sized rooms, a spacious and well equipped kitchen, modern bathroom and benefits from a south facing balcony which overlooks the stunning communal gardens. The property is located close to Surbiton's town centre and mainline station. The property is being sold with no forward chain and share of freehold.

- Second floor purpose built flat
- Modern bathroom
- Private balcony
- Double glazed
- Share of freehold
- Fitted kitchen
- 2 double bedrooms
- Living/dining room
- Gas central heating
- Close to Surbiton Station and High Street

Floor Plan



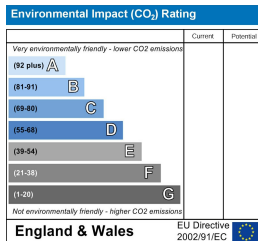
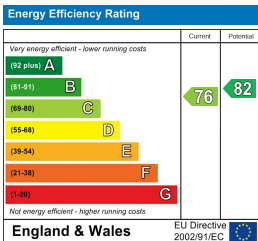
SECOND FLOOR FLAT

LOVELACE ROAD, SURBITON

INTERNAL FLOOR AREA (APPROX.) 950 sq ft/ 88.3 sq m

Whilst every attempt has been made to ensure the accuracy of this floor plan, measurement of doors, windows, rooms and any other items are approximate and no responsibility is taken for any error, omission or mis-statement. Made with Metropix © 2021.

Energy Efficiency Graph



These particulars, whilst believed to be accurate are set out as a general outline only for guidance and do not constitute any part of an offer or contract. Intending purchasers should not rely on them as statements of representation of fact, but must satisfy themselves by inspection or otherwise as to their accuracy. No person in this firm's employment has the authority to make or give any representation or warranty in respect of the property.