

# HJC

HIGHER VALUES



## Williams Grove

Surbiton, KT6 5RP

Guide Price £995,000

HJC are proud to present this stunning extended end of terrace town house, set on the prestigious St James Development. The accommodation includes a spacious open plan kitchen/breakfast/family room with bi-folding doors opening on to a pretty landscaped garden. Further benefits include master bedroom with ensuite, three further bedrooms, family bathroom, shower room, utility and downstairs WC. The property also benefits from gas central heating, underfloor heating in the kitchen and private driveway, walking distance to the Nuffield Gym, River Thames and Surbiton Station.

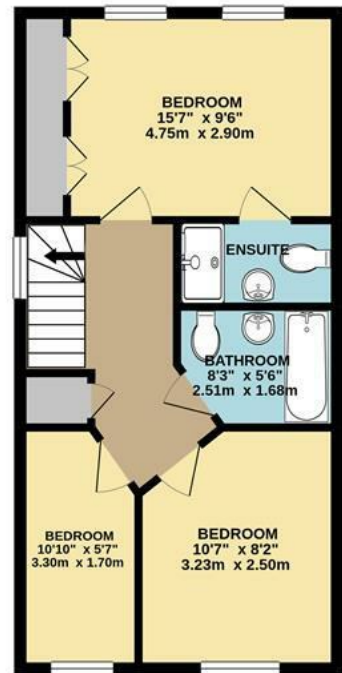
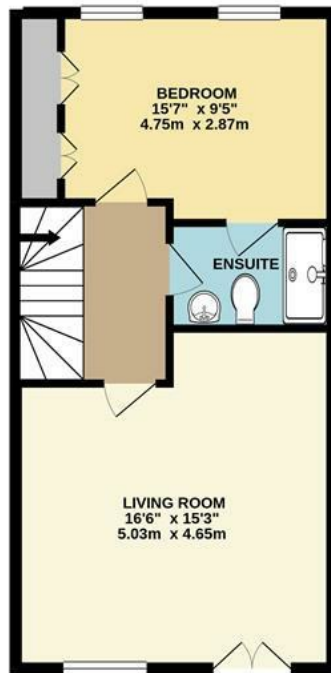
- Extended End of Terrace Town House
- 4 Bedrooms
- Kitchen/breakfast/family room
- Down stairs WC
- Close To Surbiton Station
- St James Development
- 3 refitted bath/shower rooms
- Utility
- OSP
- Close to the River Thames

# Floor Plan

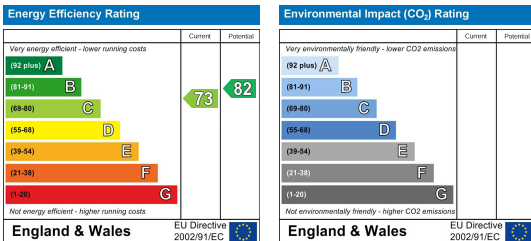


## WILLIAMS GROVE, LONG DITTON INTERNAL FLOOR AREA (APPROX.) 1590 sq ft/ 147.72sq m

Whilst every attempt has been made to ensure the accuracy of this floor plan, measurement of doors, windows, rooms and any other items are approximate and no responsibility is taken for any error, omission or mis-statement.  
Made with Metropix © 2021.



# Energy Efficiency Graph



These particulars, whilst believed to be accurate are set out as a general outline only for guidance and do not constitute any part of an offer or contract. Intending purchasers should not rely on them as statements of representation of fact, but must satisfy themselves by inspection or otherwise as to their accuracy. No person in this firm's employment has the authority to make or give any representation or warranty in respect of the property.