

HJC

HIGHER VALUES



Kings Road

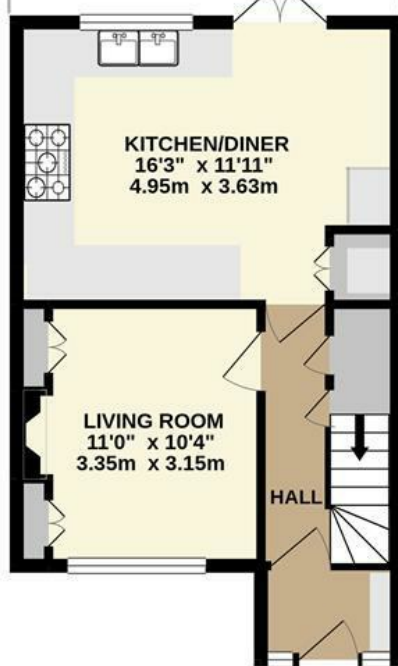
Surbiton, KT6 5JE

Price Guide £665,000

A stunning two double bedroom character end of terrace family home located in the highly desirable Long Ditton area within easy reach of Surbiton mainline station and high street with local shops and amenities a short walk away. This light and bright property has been tastefully decorated throughout with the added benefit of a open fire in the living room. The accommodation on the ground floor includes a stunning kitchen/dining room with French doors opening on to a pretty rear garden and home office. The kitchen and four piece white bathroom suite have recently been replaced and there is potential STTP to extend.

- End of terrace character home
- Living room with open fire
- Porch entrance
- Landscaped garden with side entrance
- Close to good schools
- Stunning kitchen/dining room
- Two double bedrooms
- Excellent decorative condition
- Home office in the garden
- Highly regarded road

Floor Plan

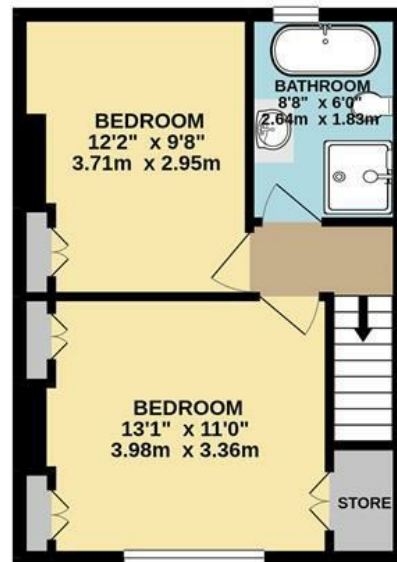


GROUND FLOOR

KINGS ROAD, LONG DITTON INTERNAL FLOOR AREA (APPROX.)

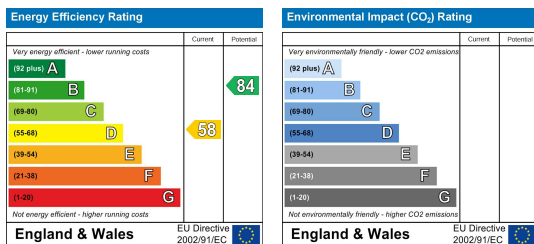
915 sq ft/ 85.0sq m

Whilst every attempt has been made to ensure the accuracy of this floor plan, measurement of doors, windows, rooms and any other items are approximate and no responsibility is taken for any error, omission or mis-statement. Made with Metropix © 2021.



FIRST FLOOR

Energy Efficiency Graph



These particulars, whilst believed to be accurate are set out as a general outline only for guidance and do not constitute any part of an offer or contract. Intending purchasers should not rely on them as statements of representation of fact, but must satisfy themselves by inspection or otherwise as to their accuracy. No person in this firm's employment has the authority to make or give any representation or warranty in respect of the property.