

HJC

HIGHER VALUES



Upper Brighton Road

Surbiton, KT6 6QX

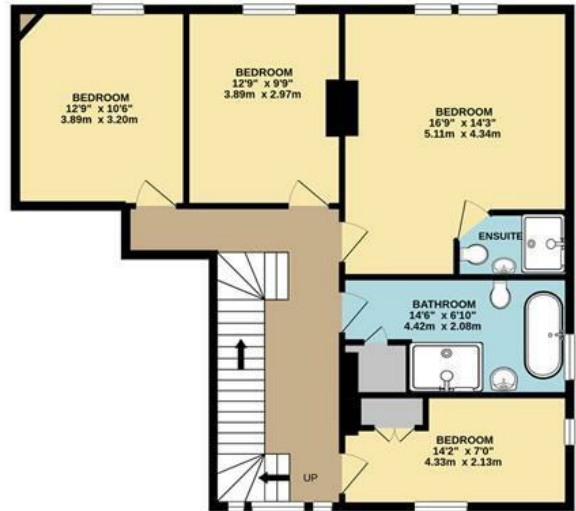
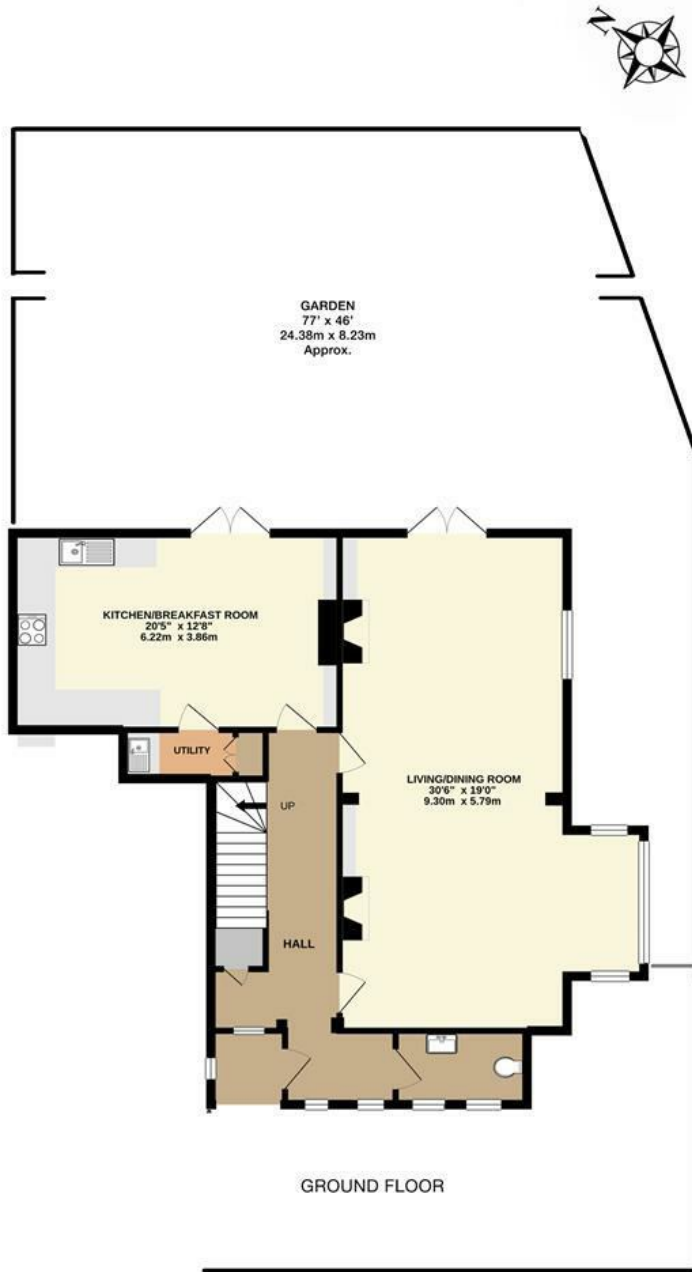
Guide Price

£1,495,000

Simply one of a kind, this five bedroom semi-detached house built in 1800's close to Surbiton retains many period features. Arranged over three floors further benefits include two ensembles, family bathroom, utility and downstairs wc. The property boasts a South West facing garden, mainly laid to lawn with decking leading from the rear of the house. The gated property has ample private parking on the front gravelled driveway, storage, and side access. Viewings are highly recommended of this lovely home.

- Stunning Period Property
- Living/Dinning room
- Ensuite to Main bedroom and Family Bathroom
- Gated Driveway With Off Street Parking
- Close to Surbiton Town Center
- Semi-Detached
- Five Bedrooms
- Downstairs W.C. and Utility
- Large Rear Garden
- Close to Surbiton Station

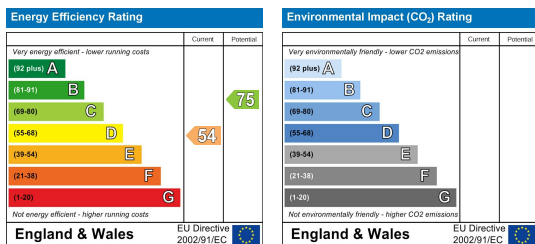
Floor Plan



UPPER BRIGHTON ROAD, SURBITON
INTERNAL FLOOR AREA (APPROX.)
2305 sq ft/ 214.0 sq m

Whilst every attempt has been made to ensure the accuracy of this floor plan, measurement of doors, windows, rooms and any other items are approximate and no responsibility is taken for any error, omission or mis-statement. Made with Metropix © 2021.

Energy Efficiency Graph



These particulars, whilst believed to be accurate are set out as a general outline only for guidance and do not constitute any part of an offer or contract. Intending purchasers should not rely on them as statements of representation of fact, but must satisfy themselves by inspection or otherwise as to their accuracy. No person in this firm's employment has the authority to make or give any representation or warranty in respect of the property.