

HJC

HIGHER VALUES



Penners Gardens

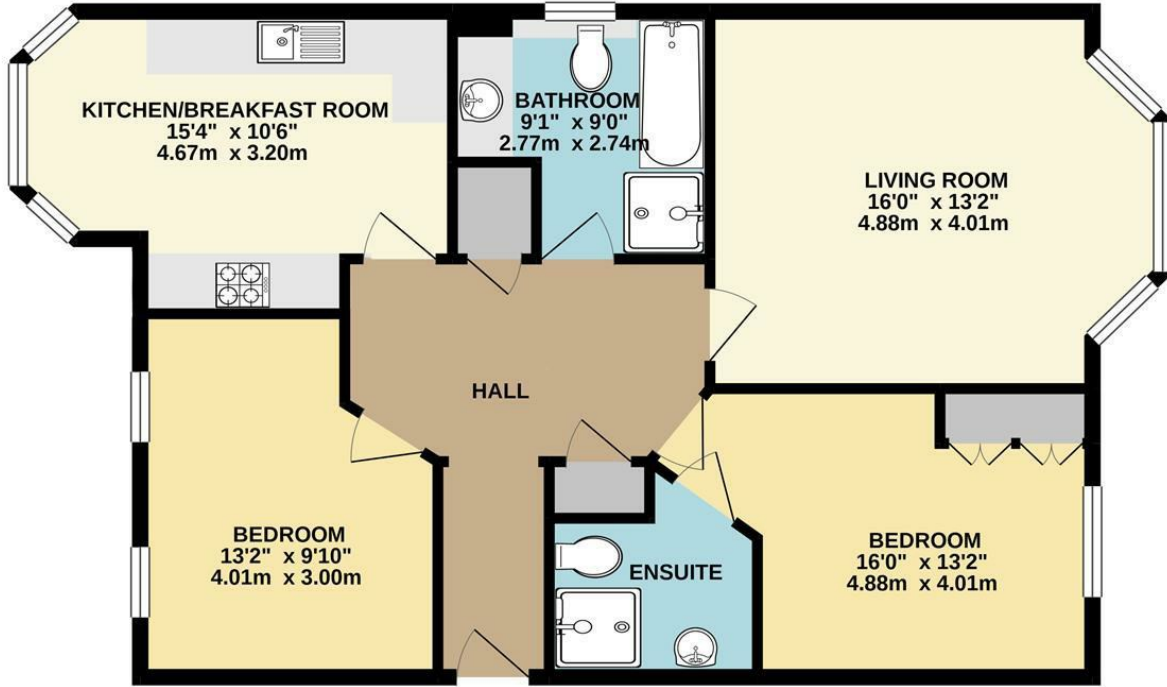
, KT6 6LY

Asking Price £525,000

A stunning and very spacious luxury apartment enjoying a quiet location but with easy access to the town centre and station. The accommodation includes a good size reception, well appointed kitchen/breakfast room, main bedroom with newly fitted ensuite shower room, a further good size double bedroom and a guest newly fitted bathroom. The property also benefits from allocated parking and a lift.

- Purpose built 2 bedroom apartment
- Kitchen/breakfast room
- Second double bedroom
- Allocated Parking Space
- Lift service
- Living room/dining room
- Main bedroom with newly fitted ensuite
- Further newly fitted bathroom
- Secure Gated Development
- Walking Distance to Surbiton Station

Floor Plan

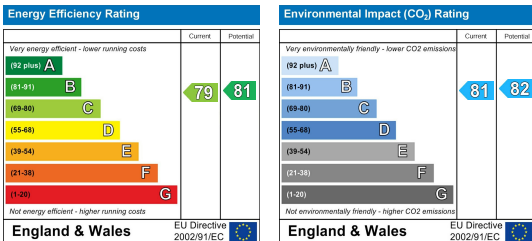


FIRST FLOOR FLAT

BEECH COURT, PENNERS GARDENS, SURBITON
 INTERNAL FLOOR AREA (APPROX.) 870 sq ft/ 80.7 sq m

Whilst every attempt has been made to ensure the accuracy of this floor plan, measurement of doors, windows, rooms and any other items are approximate and no responsibility is taken for any error, omission or mis-statement.
 Made with Metropix © 2020.

Energy Efficiency Graph



These particulars, whilst believed to be accurate are set out as a general outline only for guidance and do not constitute any part of an offer or contract. Intending purchasers should not rely on them as statements of representation of fact, but must satisfy themselves by inspection or otherwise as to their accuracy. No person in this firm's employment has the authority to make or give any representation or warranty in respect of the property.