

HJC

HIGHER VALUES



Ewell Road

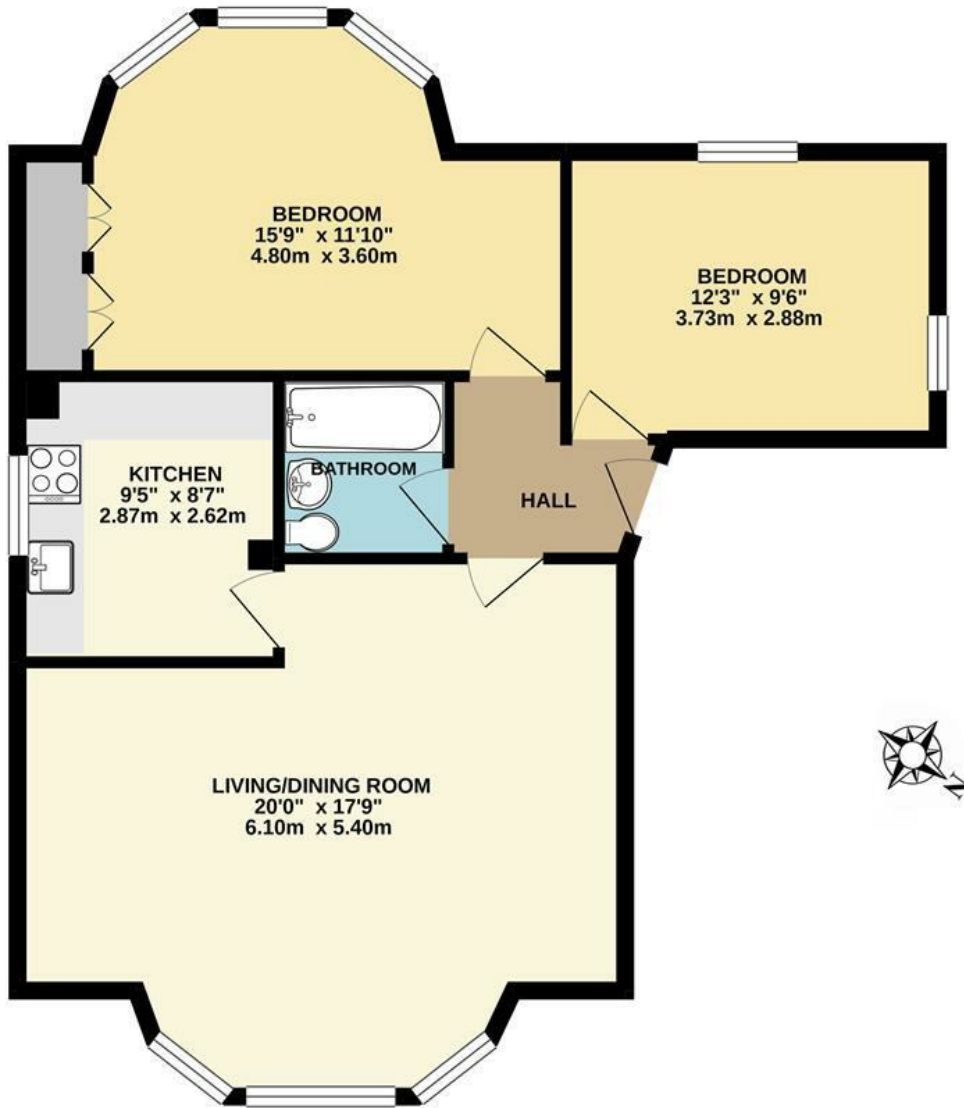
Surbiton, KT6 6HL

Asking Price £489,950

A truly stunning upper ground floor larger than average Victorian conversion flat. being the only dwelling on this level. This beautiful property is situated opposite Fishponds Park, a conservation area and wildlife sanctuary. Surbiton station and high street are close by. It is extremely well proportioned including a great hallway leading to a fabulous reception room which is impressive in size with high ceilings, character features offering ample space for dining. It features a good sized kitchen, two double bedrooms - the master bedroom being very generous in size with built in wardrobes and a large bay window overlooking the gardens - a second double bedroom also overlooking the garden. Further benefits include a communal garden, allocated off street parking on the drive and a separate large store room located in the entrance hall.. An internal inspection is essential to fully appreciate this property, being sold with a share of freehold and a very long lease.

- Stunning character conversion
- Well fitted kitchen
- Lovely communal garden
- Excellent decorative order
- Share of Freehold
- Light living/dining room
- Two double bedrooms
- High ceilings
- Off street parking space
- Lease over 900 years

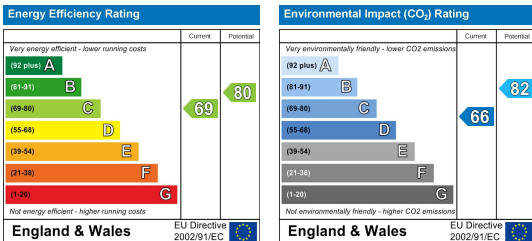
Floor Plan



EWELL ROAD, SURBITON
INTERNAL FLOOR AREA (APPROX.) 735 sq ft/ 68.3 sq m

Whilst every attempt has been made to ensure the accuracy of this floor plan, measurement of doors, windows, rooms and any other items are approximate and no responsibility is taken for any error, omission or mis-statement. Made with Metropix © 2020.

Energy Efficiency Graph



These particulars, whilst believed to be accurate are set out as a general outline only for guidance and do not constitute any part of an offer or contract. Intending purchasers should not rely on them as statements of representation of fact, but must satisfy themselves by inspection or otherwise as to their accuracy. No person in this firm's employment has the authority to make or give any representation or warranty in respect of the property.