

HJC

HIGHER VALUES



Chadwick Place

Surbiton, KT6 5RG

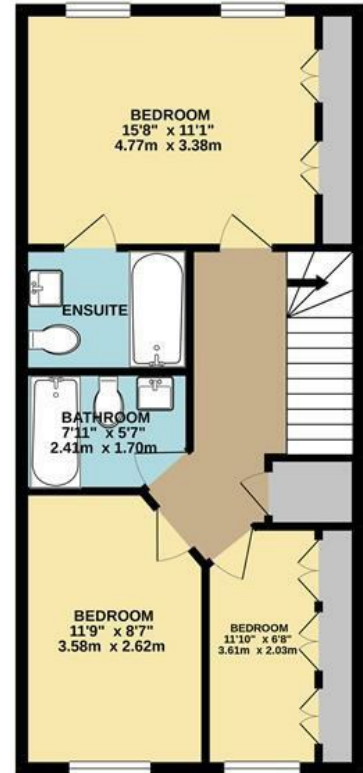
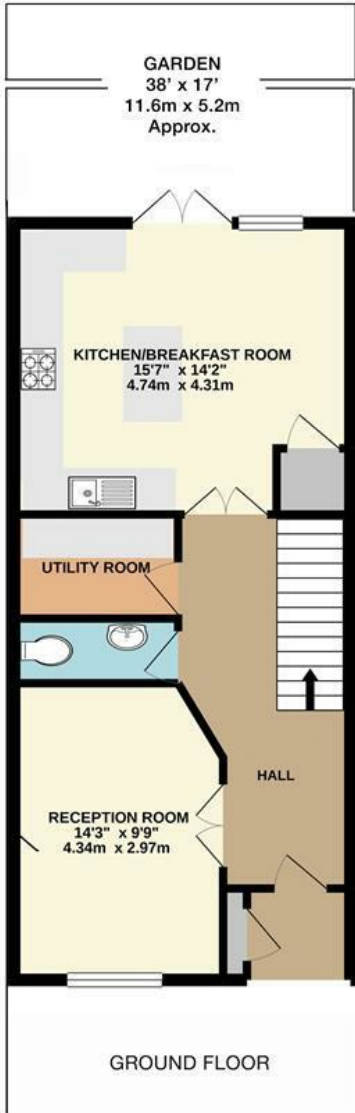
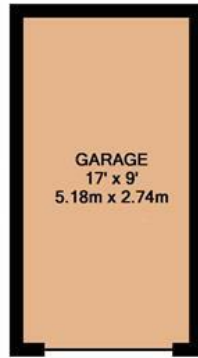
Asking Price £995,000

HJC are proud to present this rare end of terrace town house, located on the sought after St James Development. This beautifully presented Townhouse is overlooking the main square, only a few on the development are of this size. The accommodation includes two reception rooms, well appointed kitchen/breakfast room, master bedroom with ensuite bathroom, three further bedrooms and two further bathrooms. The property also benefits from a pretty rear garden, garage, driveway parking and no onward chain.

- End of Terrace Town House one of only two designed this way
- 4 Bedrooms
- Kitchen/breakfast room
- Detached garage and off street parking
- Close To Surbiton Station
- St James Development
- 3 bath/shower rooms
- Two Reception Rooms
- Close to the River Thames
- No onward chain

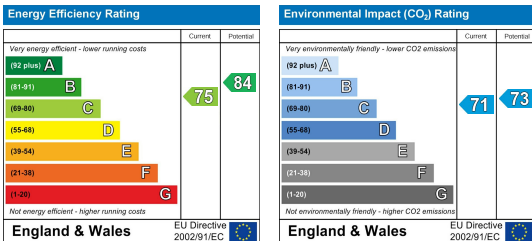
Floor Plan

CHADWICK PLACE, SURBITON
 TOTAL APPROX. FLOOR AREA
 1810 sq ft/ 168.2 sq m
 Including garage



Whilst every attempt has been made to ensure the accuracy of this floor plan, measurement of doors, windows, rooms and any other items are approximate and no responsibility is taken for any error, omission or mis-statement. Made with Metropix © 2020.

Energy Efficiency Graph



These particulars, whilst believed to be accurate are set out as a general outline only for guidance and do not constitute any part of an offer or contract. Intending purchasers should not rely on them as statements of representation of fact, but must satisfy themselves by inspection or otherwise as to their accuracy. No person in this firm's employment has the authority to make or give any representation or warranty in respect of the property.