

# HJC

HIGHER VALUES



## Lovelace Road

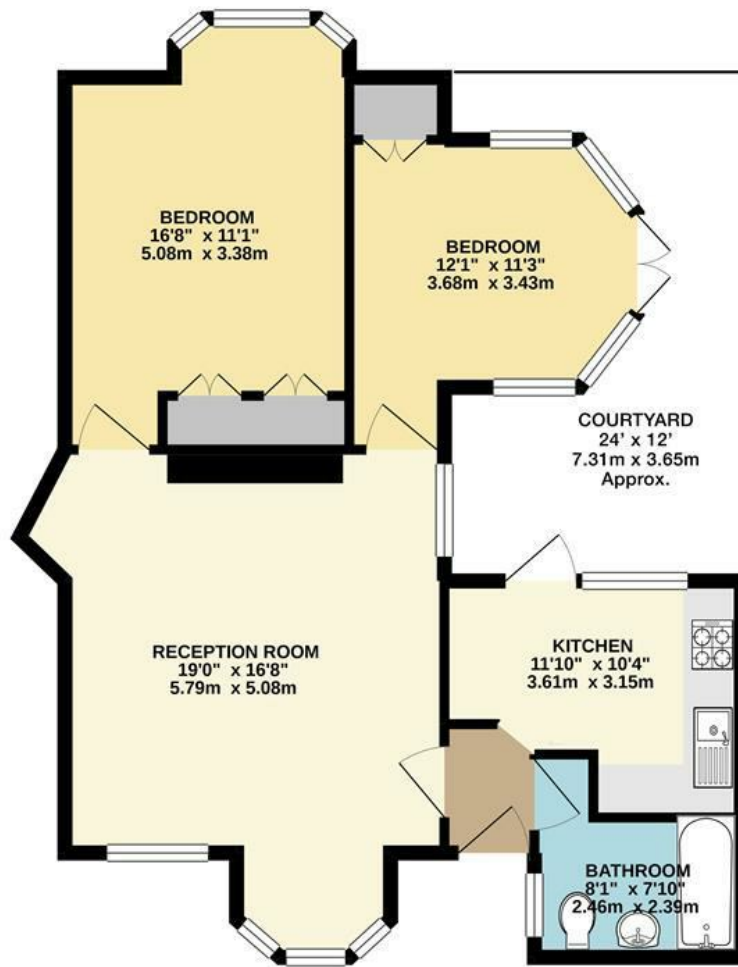
Surbiton, KT6 6ND

Asking Price £499,950

Offered for sale is this beautiful two double bedroom Victorian conversion flat which is located in a highly desirable area of Surbiton. This flat is beautifully presented including a feature fireplace, newly fitted flooring, modern fitted kitchen, stunning bathroom, and private garden. The property also benefits from off street parking, own private entrance, communal garden and long lease. An internal inspection is essential to fully appreciate this property.

- Character conversion private entrance
- Well fitted kitchen
- Refurbished bathroom
- Off street parking
- Communal Garden
- Living/dining room
- Two double bedrooms
- Excellent Decorative Order
- Private garden
- Close to Surbiton Station

# Floor Plan

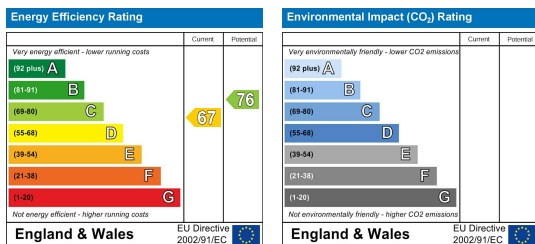


GROUND FLOOR FLAT

LOVELACE ROAD, SURBITON  
INTERNAL FLOOR AREA (APPROX.) 725 sq ft/ 67.36 sq m

Whilst every attempt has been made to ensure the accuracy of this floor plan, measurement of doors, windows, rooms and any other items are approximate and no responsibility is taken for any error, omission or mis-statement. Made with Metropix © 2020.

## Energy Efficiency Graph



These particulars, whilst believed to be accurate are set out as a general outline only for guidance and do not constitute any part of an offer or contract. Intending purchasers should not rely on them as statements of representation of fact, but must satisfy themselves by inspection or otherwise as to their accuracy. No person in this firm's employment has the authority to make or give any representation or warranty in respect of the property.