

HJC

HIGHER VALUES



Riversdale Road

Thames Ditton, KT7 0QL

£1,850,000

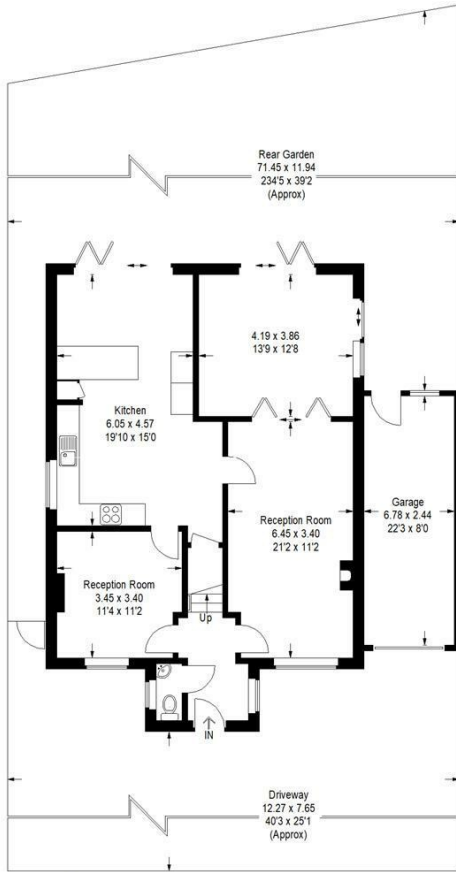
A wonderful five-bedroom family residence located on a riverside cul-de-sac in the heart of charming Thames Ditton village, with more than 2500ft of accommodation over 3 floors and a breath-taking south-westerly facing garden of over 200ft. The ground floor comprises an entrance hall with guest WC and three reception rooms – one overlooking the garden at front, another being a 21ft living room stretching back to the third, a delightful sunroom, opening via bi-folds to the rear patio area. A bright, double-aspect kitchen with plenty of storage leads to a dining area, which also opens via bi-folds to the rear patio. The first-floor benefits from a glorious principal bedroom suite, with Juliet balcony overlooking the expanse of green to the back, walk-in wardrobe, and separate ensuite. Two further double bedrooms overlook the front, one with ensuite, and there's a well-appointed family bathroom. The second floor comprises two further double bedrooms, a family shower room and plenty of eaves storage. Outside there is front to back side access, a raised sunny patio area across the full width of the back, with steps down to a lawned garden, with many mature trees and shrubs all the way down to the end, behind which is a service road. Further benefitting garage, with utility area, off-street parking to front and shared private river access across the road, perfect for a canoe or SUP.

- 5 Bedroom Detached Family Home
- Stunning South West Facing Garden
- Juliet Balcony Overlooking Gardens
- 2 Family Bathrooms
- Open-Plan Kitchen Dining Room
- River Road Location in Village
- Principal Bedroom with En-Suite and Walk-in Wardrobe
- 4 Double Bedrooms, one with En-Suite
- 3 Reception Rooms
- Off-Street Parking, Garage and shared River Access

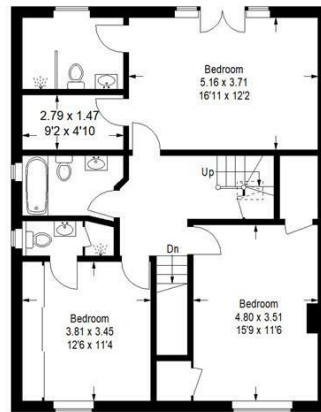
Floor Plan

7 Riversdale Road

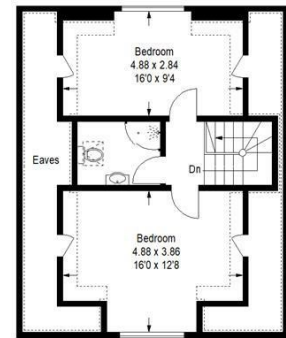
Approximate Gross Internal Area (Including Eaves) = 235.7 sq m / 2537 sq ft
 Garage = 16.6 sq m / 179 sq ft
 Total = 252.3 sq m / 2716 sq ft



Ground Floor



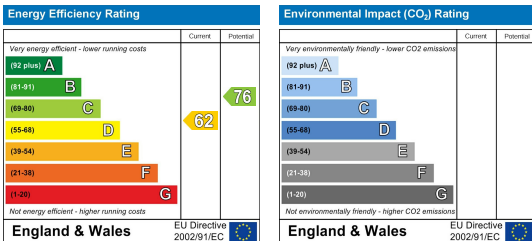
First Floor



Second Floor

Illustration for identification purposes only, measurements are approximate, not to scale.
 FloorplansUk.com © 2024 (ID1076204)

Energy Efficiency Graph



These particulars, whilst believed to be accurate are set out as a general outline only for guidance and do not constitute any part of an offer or contract. Intending purchasers should not rely on them as statements of representation of fact, but must satisfy themselves by inspection or otherwise as to their accuracy. No person in this firm's employment has the authority to make or give any representation or warranty in respect of the property.