

HJC

HIGHER VALUES



Harvest Lane

Thames Ditton, KT7 0NG

Guide Price £875,000

A beautifully presented 4-bedroom end of terrace townhouse located in a secure, gated development in a prime central village location just off Thames Ditton High Street and only 0.35 miles from the train station. The ground floor features a modern fitted kitchen, a guest WC and a wonderful split-level dining/living area flooded with light through two floor to ceiling feature arched French doors which open to a delightful courtyard garden. On the first floor there are two large double bedrooms with extensive wardrobe space, one with an ensuite shower room as well as a well-appointed family bathroom and an additional full-length mirrored wardrobe in the hall. The top floor comprises two more double bedrooms, each with built-in cupboards and access to eaves storage. A path from the private courtyard garden at the rear of the property leads to a full-sized garage with power and light and direct street access. Annual service charge £2,507 per annum, includes full estate maintenance & security, gatekeeper, window cleaning & redecoration of external woodwork.

- Split level sitting/dining room
- Family bathroom
- Extensive wardrobe storage space
- Garage with power
- Secure gated development
- Modern fitted kitchen
- Ensuite shower room
- Guest cloakroom
- Allocated parking space
- Central village location

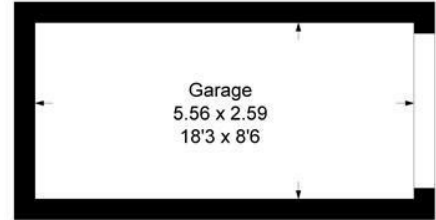
Floor Plan

Harvest Lane

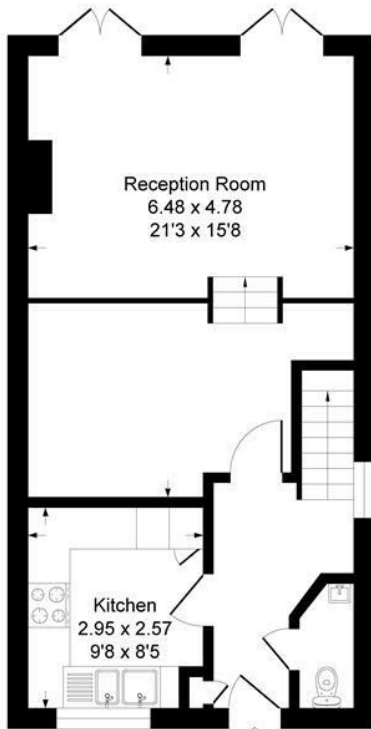
Approximate Gross Internal Floor Area = 124.2 sq m / 1337 sq ft

Garage Area = 14.4 sq m / 155 sq ft

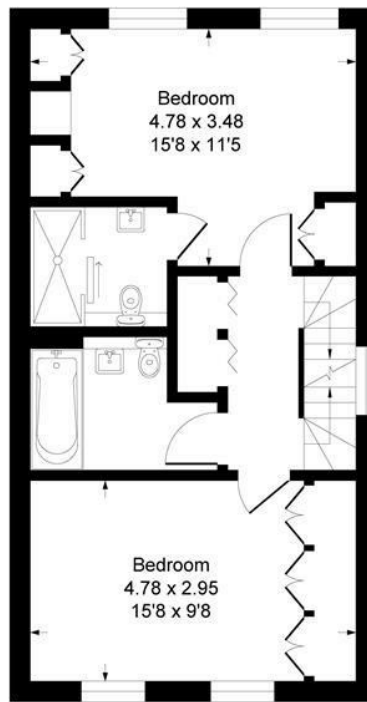
Total Area = 138.6 sq m / 1492 sq ft



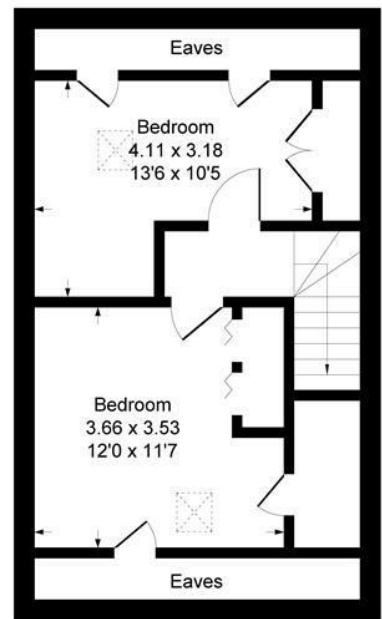
Garage



Ground Floor



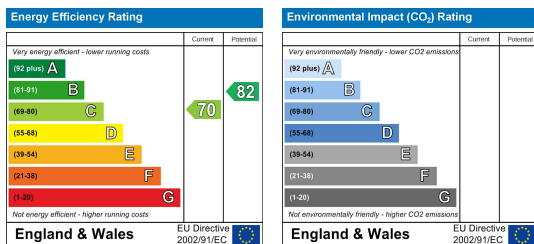
First Floor



Second Floor

Illustration for identification purposes only, measurements are approximate, not to scale.
Produced By Esjay Property Marketing

Energy Efficiency Graph



These particulars, whilst believed to be accurate are set out as a general outline only for guidance and do not constitute any part of an offer or contract. Intending purchasers should not rely on them as statements of representation of fact, but must satisfy themselves by inspection or otherwise as to their accuracy. No person in this firm's employment has the authority to make or give any representation or warranty in respect of the property.