

HJC

HIGHER VALUES



Alexandra Road

Thames Ditton, KT7 0QT

£759,500

A pretty 4 bedroom, 2 bathroom period terrace home positioned on a desirable river road in the heart of Thames Ditton. On the ground floor is sitting room with square bay window and feature fireplace. A generously sized dining room leads to kitchen and bathroom. Off the first floor landing are 3 bedrooms with the third off the second. Finally on the top floor is a further double room with ensuite shower room and Juliette balcony with open outlook and a bonus area cleverly located in eaves space that suits an office. The garden with patio benefits private access to the recreation fields. Just a stones throw from local shops, schools and train station - the location is pretty hard to beat.

- Period terraced property
- 2 bathrooms
- Dining room with fireplace and understairs cupboard
- Garden with patio and access to recreation ground
- Close to shops, schools and trainlinks
- 4 bedrooms
- Reception room with square bay and fireplace
- Modern fitted kitchen
- Office space

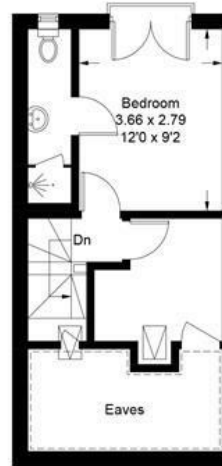
Floor Plan

6 Alexandra Road

Approximate Gross Internal Area = 119.0 sq m / 1281 sq ft
 Eaves = 7.2 sq m / 77 sq ft
 Total = 126.2 sq m / 1358 sq ft



= Reduced headroom below 1.5m / 5'0"



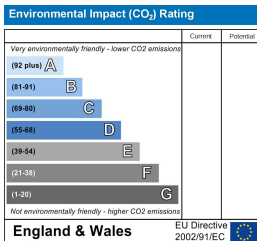
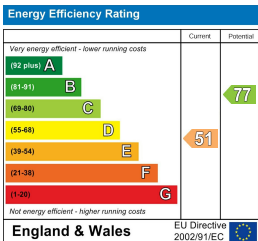
Second Floor



First Floor

Illustration for identification purposes only, measurements are approximate, not to scale. floorplansUsketch.com © (ID1042189)

Energy Efficiency Graph



These particulars, whilst believed to be accurate are set out as a general outline only for guidance and do not constitute any part of an offer or contract. Intending purchasers should not rely on them as statements of representation of fact, but must satisfy themselves by inspection or otherwise as to their accuracy. No person in this firm's employment has the authority to make or give any representation or warranty in respect of the property.