

# HJC

HIGHER VALUES



## Ditton Lawn, Portsmouth Road

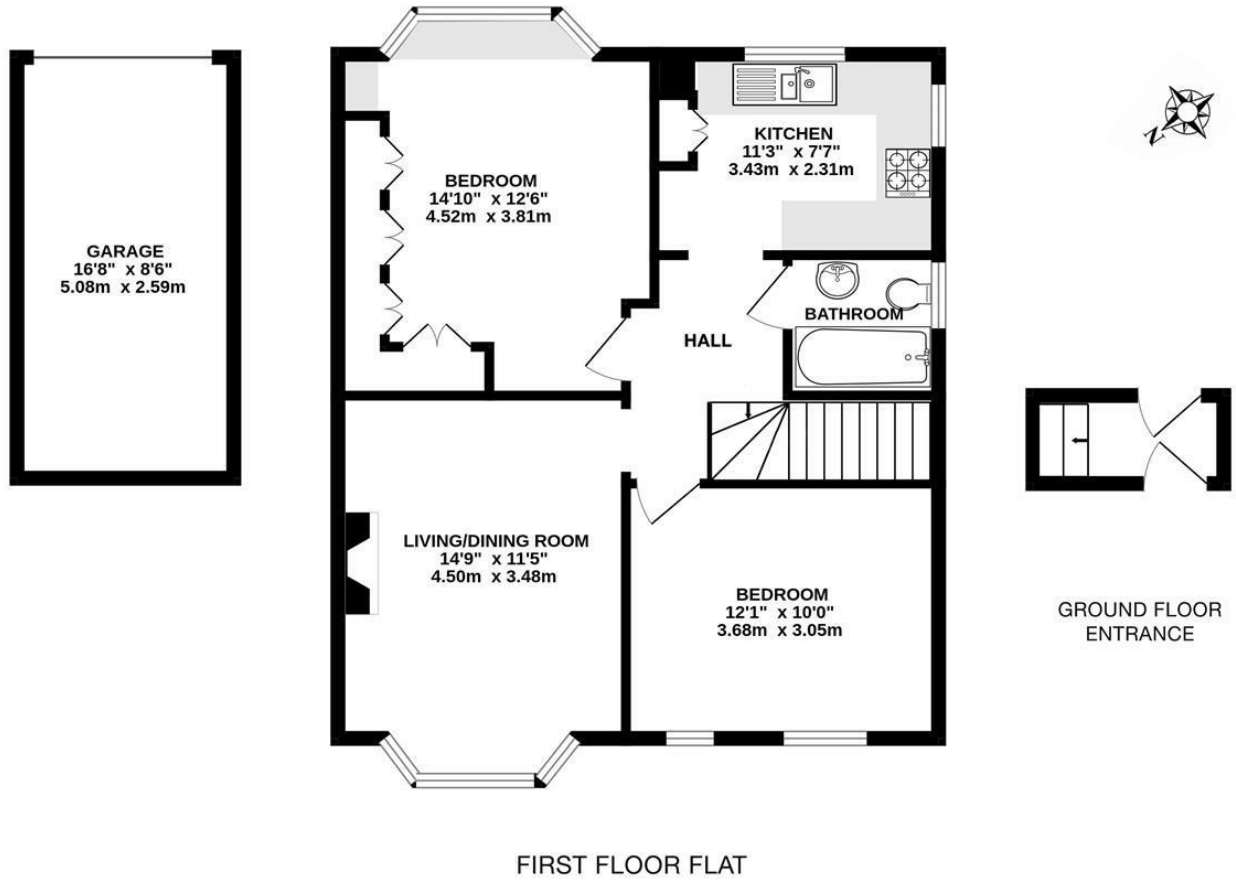
£389,950

Thames Ditton, KT7 0EN

A superb, well-presented 2 double bedroom first floor maisonette on Giggs Hill Green. Leading off a welcoming, light hallway is a generous living room that has a lovely feature fireplace and mantelpiece. The double glazed bay window offers superb views over the green. Bedroom one benefits from wall to wall fitted wardrobes, a fitted window seat with further storage and views over the gardens. Bedroom two is also a generous double. The kitchen is modern and cleverly fitted to provide plenty of storage. This versatile and characterful property also comes with share of freehold, a large loft for storage, a garage and access to expansive, well-kept communal grounds. No onward chain.

- Well-presented first floor maisonette
- Large reception room with views over cricket green
- Modern fitted kitchen
- Beautifully-kept communal gardens
- No onward chain
- Master double bedroom with extensive storage
- Second large double bedroom to front
- Garage
- Super location overlooking Giggs Hill Green
- Long lease and share of freehold

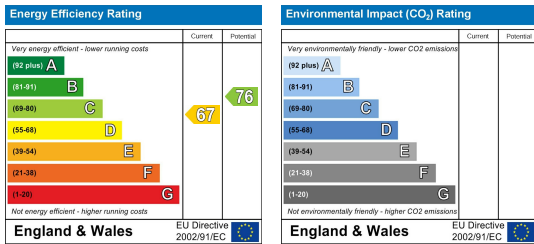
# Floor Plan



Whilst every attempt has been made to ensure the accuracy of this floor plan, measurement of doors, windows, rooms and any other items are approximate and no responsibility is taken for any error, omission or mis-statement.  
Made with Metropix © 2023.

**Ditton Lawn, Thames Ditton**  
INTERNAL FLOOR AREA (APPROX.) 705 sq ft/ 65.5 sq m  
Excluding separate Garage

## Energy Efficiency Graph



These particulars, whilst believed to be accurate are set out as a general outline only for guidance and do not constitute any part of an offer or contract. Intending purchasers should not rely on them as statements of representation of fact, but must satisfy themselves by inspection or otherwise as to their accuracy. No person in this firm's employment has the authority to make or give any representation or warranty in respect of the property.