

HJC

HIGHER VALUES



Westville Road

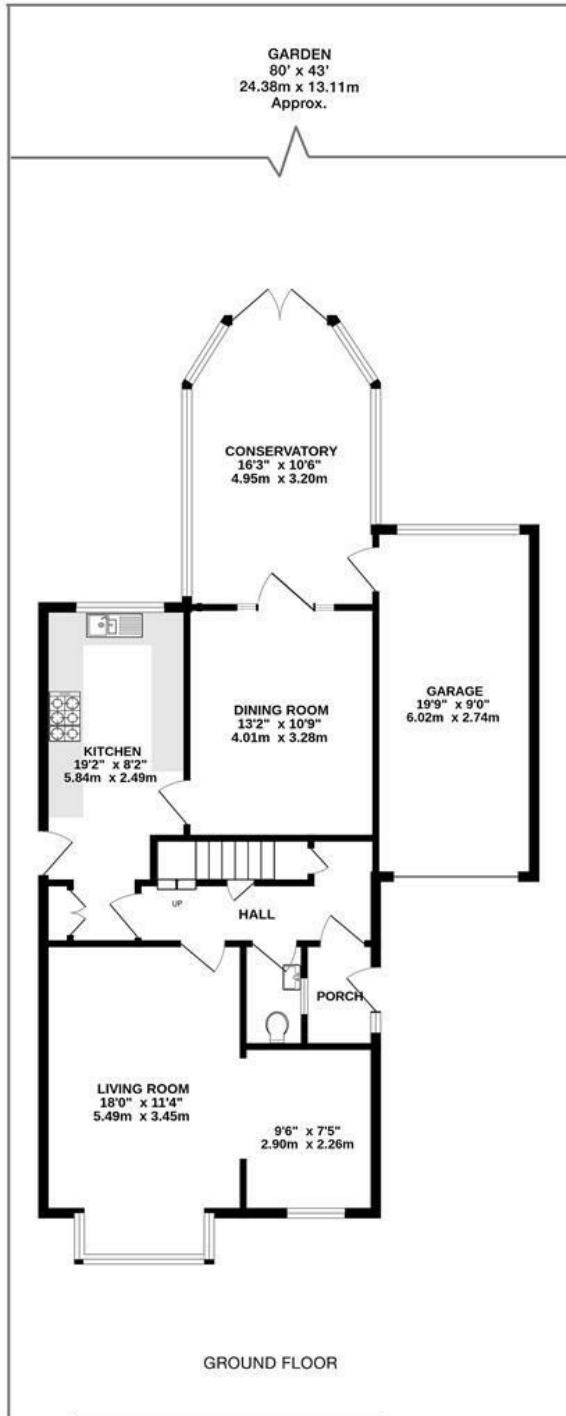
Thames Ditton, KT7 0UJ

£975,000

A four bedroom modern detached family home set over two floors, with off-street parking, garage and a beautiful garden. The ground floor consists of a living room to front and dining room to rear, which opens to a conservatory. From the conservatory you can access the garage and also the lovely 80ft garden. Also on the ground floor is a kitchen and a guest WC. On the first floor are four bedrooms, one of which is ensuite, a family bathroom and access to the loft from the landing. Westville Road is a highly-regarded residential road located within a short walk of primary and secondary schools, including Hinchley Wood School, as well as Thames Ditton High Street and station.

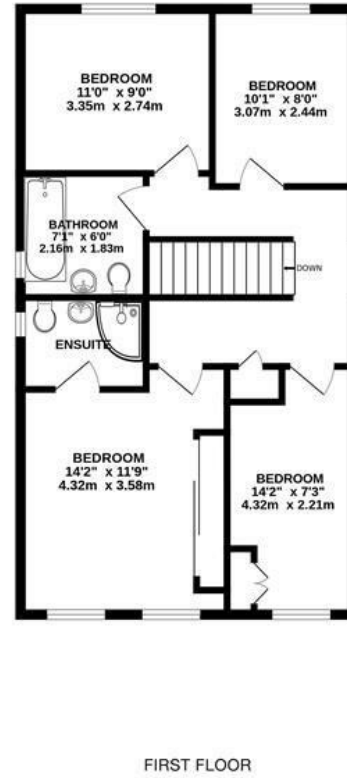
- Detached family home
- Family bathroom plus ensuite shower
- Off-street parking
- Living room, dining room and conservatory
- Four bedrooms
- Connected garage
- circa 80ft garden
- Potential to add value (STPP)

Floor Plan

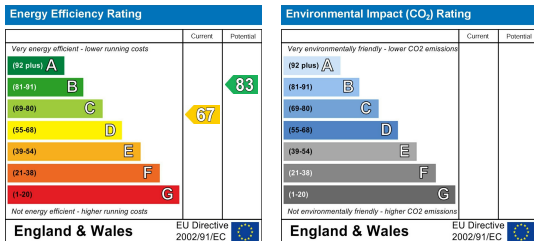


WESTVILLE ROAD, THAMES DITTON
INTERNAL FLOOR AREA (APPROX.)
1680 sq ft/156.0 sq m

Whilst every attempt has been made to ensure the accuracy of this floor plan, measurement of doors, windows, rooms and any other items are approximate and no responsibility is taken for any error, omission or mis-statement.
Made with Metropix © 2023.



Energy Efficiency Graph



These particulars, whilst believed to be accurate are set out as a general outline only for guidance and do not constitute any part of an offer or contract. Intending purchasers should not rely on them as statements of representation of fact, but must satisfy themselves by inspection or otherwise as to their accuracy. No person in this firm's employment has the authority to make or give any representation or warranty in respect of the property.