

HJC

HIGHER VALUES



Winters Road

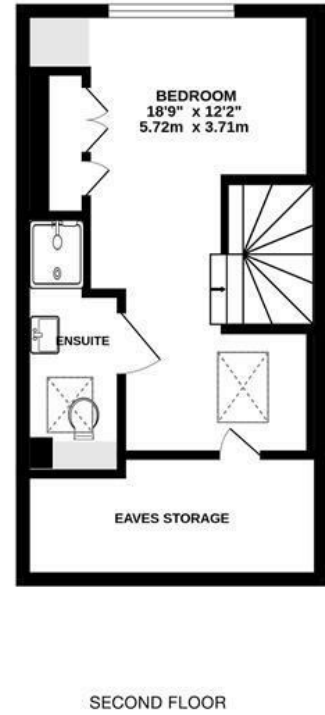
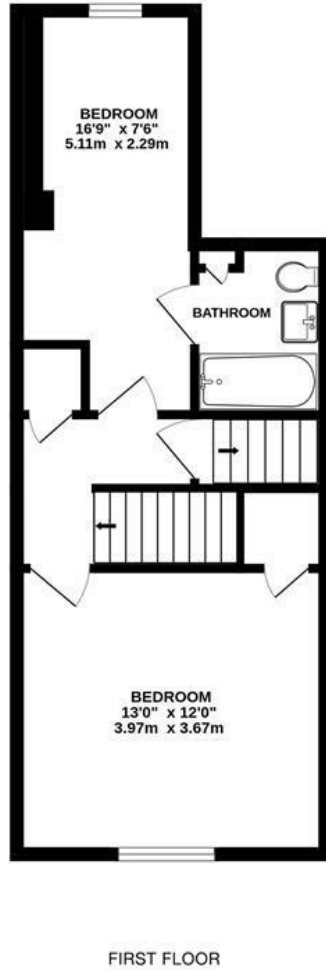
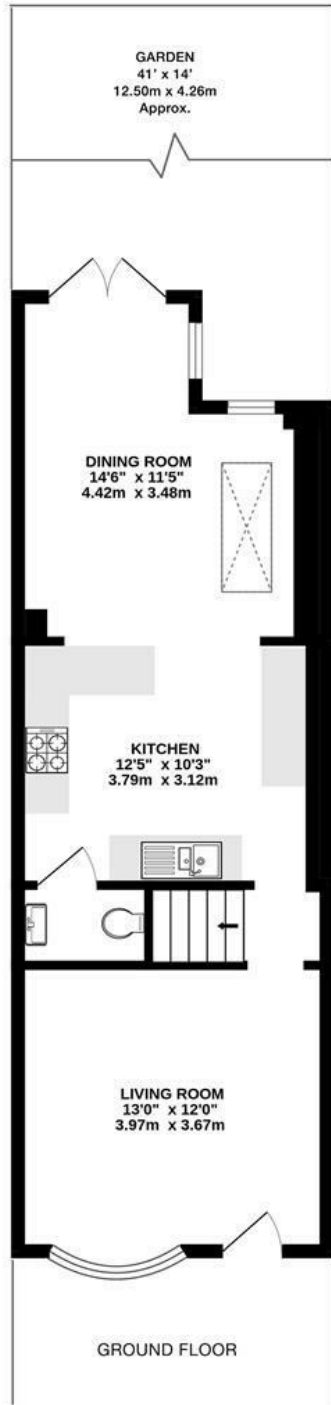
Thames Ditton, KT7 0XW

£725,000

A delightful 3 bedroom, 2 bathroom extended Victorian cottage set in a residential road close to both Thames Ditton and Surbiton. Offering sociable, contemporary open-plan living on the ground floor and including a further reception room to front. Two bedrooms and a bathroom on the first floor, further bedroom with ensuite on the top floor. The private rear garden has been landscaped and is ideal for al fresco entertaining. Close to fantastic local schools and transport links, both bus and train, and sold with no onward chain.

- 3 bedroom period property
- Beautifully presented
- Close to Thames Ditton & Surbiton
- Ample storage
- Desirable residential road
- 2 contemporary bathrooms
- Modern open plan kitchen/dining room
- Landscaped garden with rear access
- Double glazed throughout
- No onward chain

Floor Plan

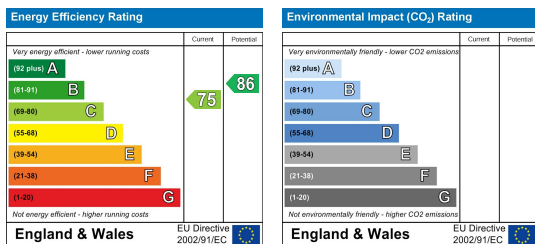


**WINTERS ROAD, THAMES DITTON
INTERNAL FLOOR AREA (APPROX.)
1177 sq ft/109.31 sq m
Including Eaves Storage**

Whilst every attempt has been made to ensure the accuracy of this floor plan, measurement of doors, windows, rooms and any other items are approximate and no responsibility is taken for any error, omission or mis-statement.
Made with Metropix © 2023.



Energy Efficiency Graph



These particulars, whilst believed to be accurate are set out as a general outline only for guidance and do not constitute any part of an offer or contract. Intending purchasers should not rely on them as statements of representation of fact, but must satisfy themselves by inspection or otherwise as to their accuracy. No person in this firm's employment has the authority to make or give any representation or warranty in respect of the property.