

HJC

HIGHER VALUES



Ennismore Gardens

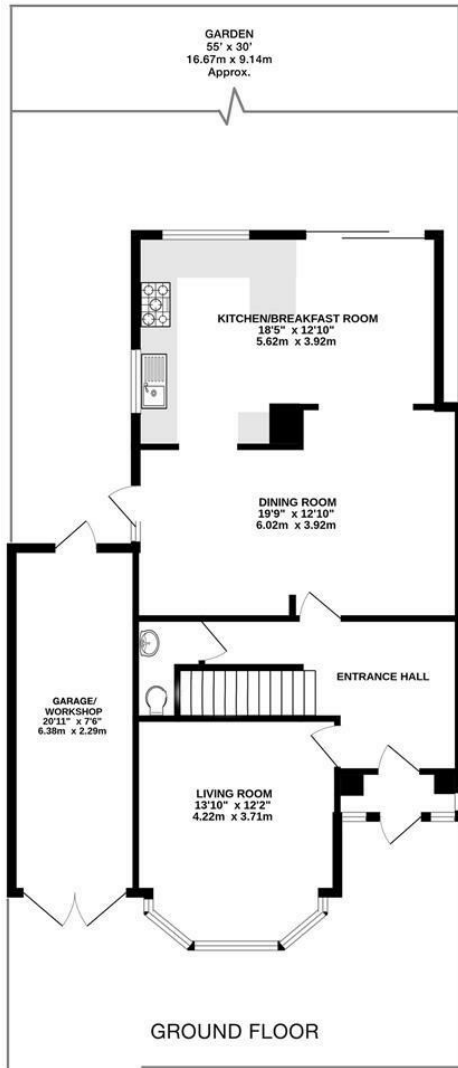
Thames Ditton, KT7 0YS

£999,950

An attractive semi-detached home on the sought after Davis Estate which has been extended to create an excellent family space. On the ground floor is a generous hallway, off which is a WC, a front reception room with bay window and to the rear an impressive open-plan kitchen/family room, which opens to side and rear onto a generous garden with decking, borders and a sunny patio area. The first floor comprises three double bedrooms with a family bathroom and on the second floor is the principle bedroom, with a Juliet balcony with views across gardens, an ensuite shower room and ample eaves storage. The property further benefits a garage of over 20ft in length and off-street parking for two cars to front. Ennismore Gardens is a superb location - near to both Esher & Thames Ditton train stations, within great school catchments and a short walk to Thames Ditton village, Hampton Court Palace, Bushy Park and the River Thames.

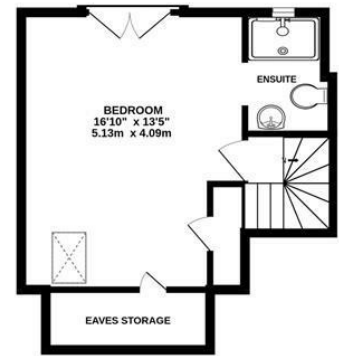
- Semi-detached family home
- Large open plan kitchen/family room
- Sunny front reception with bay window
- Large garden with 2 seating areas
- Close to Esher & Thames Ditton rail links
- 4 bedrooms, 2 bathrooms
- Master suite with Juliet balcony
- Recently redecorated
- Workshop/garage & parking for 2 vehicles

Floor Plan

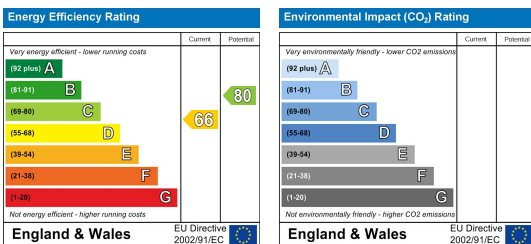


ENNISMORE GARDENS, THAMES DITTON INTERNAL FLOOR AREA (APPROX.) 1830 sq ft/170.0 sq m

Whilst every attempt has been made to ensure the accuracy of this floor plan, measurement of doors, windows, rooms and any other items are approximate and no responsibility is taken for any error, omission or mis-statement. Made with Metropix © 2023.



Energy Efficiency Graph



These particulars, whilst believed to be accurate are set out as a general outline only for guidance and do not constitute any part of an offer or contract. Intending purchasers should not rely on them as statements of representation of fact, but must satisfy themselves by inspection or otherwise as to their accuracy. No person in this firm's employment has the authority to make or give any representation or warranty in respect of the property.