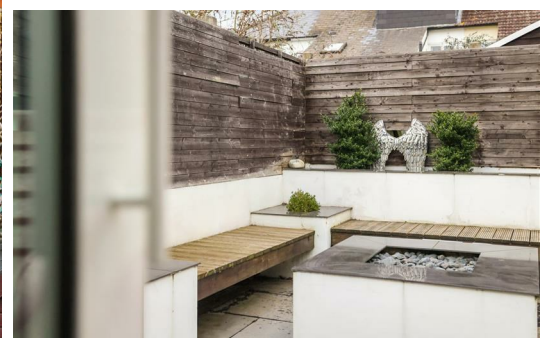


HJC

HIGHER VALUES



Rushett Close

Thames Ditton, KT7 0UR

£599,950

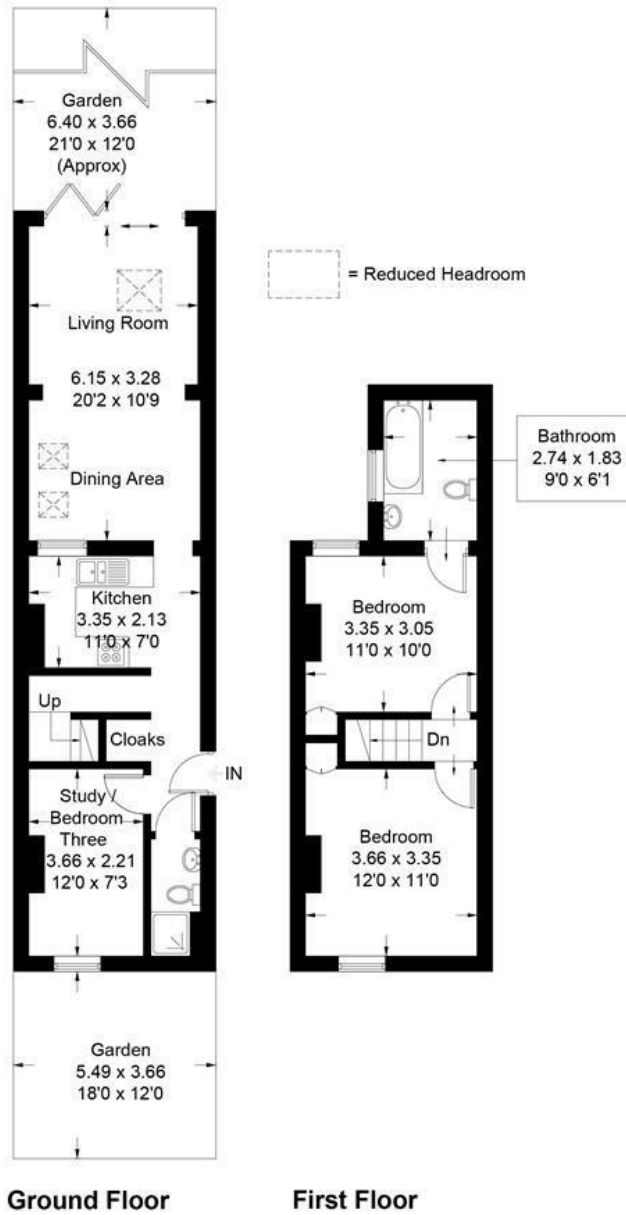
A pretty 2 bedroom end of terrace Victorian cottage in the heart of the Rushett village area of Thames Ditton. At the front of the house is a light reception room - this versatile space could be a playroom, study or a third bedroom with adjoining shower room/WC. The heart of the house has a separate kitchen that opens to a large open plan dining room/lounge. Bi-folding doors open to a contemporary courtyard garden with feature firepit and bespoke seating areas. Upstairs are two good sized bedrooms and family bathroom. Further benefits are a downstairs cloakroom area, boarded loft for storage and off-street parking. Equidistant to Surbiton and Thames Ditton rail links and in close proximity to schools, a local pub, shops and Long Ditton recreation ground.

- Pretty end terrace Victorian cottage
- Open plan lounge/dining room
- Family bathroom & additional separate shower room
- Front reception room/bedroom 3
- Off street parking
- 2 double bedrooms
- Modern kitchen
- Private courtyard garden with feature firepit and seating
- Cul de sac location
- Access to rail links, parks and schools

Floor Plan

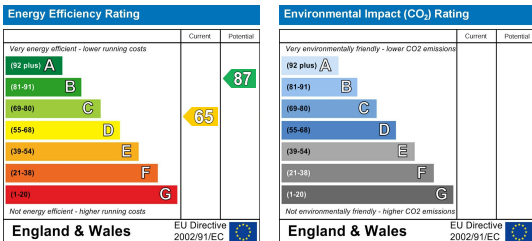
Rushett Close, KT7

Approximate Gross Internal Area = 80.2 sq m / 863 sq ft



Measured in accordance with RICS Code of Measuring Practice. To be used for identification and guidance purposes only. Whilst every care is taken in the preparation of this plan, please check all dimensions, shapes and compass bearings before making any decisions reliant upon them. www.london58.com © 2023 hello@london58.com

Energy Efficiency Graph



These particulars, whilst believed to be accurate are set out as a general outline only for guidance and do not constitute any part of an offer or contract. Intending purchasers should not rely on them as statements of representation of fact, but must satisfy themselves by inspection or otherwise as to their accuracy. No person in this firm's employment has the authority to make or give any representation or warranty in respect of the property.