

HJC

HIGHER VALUES



Church Lane

Thames Ditton, KT7 0NL

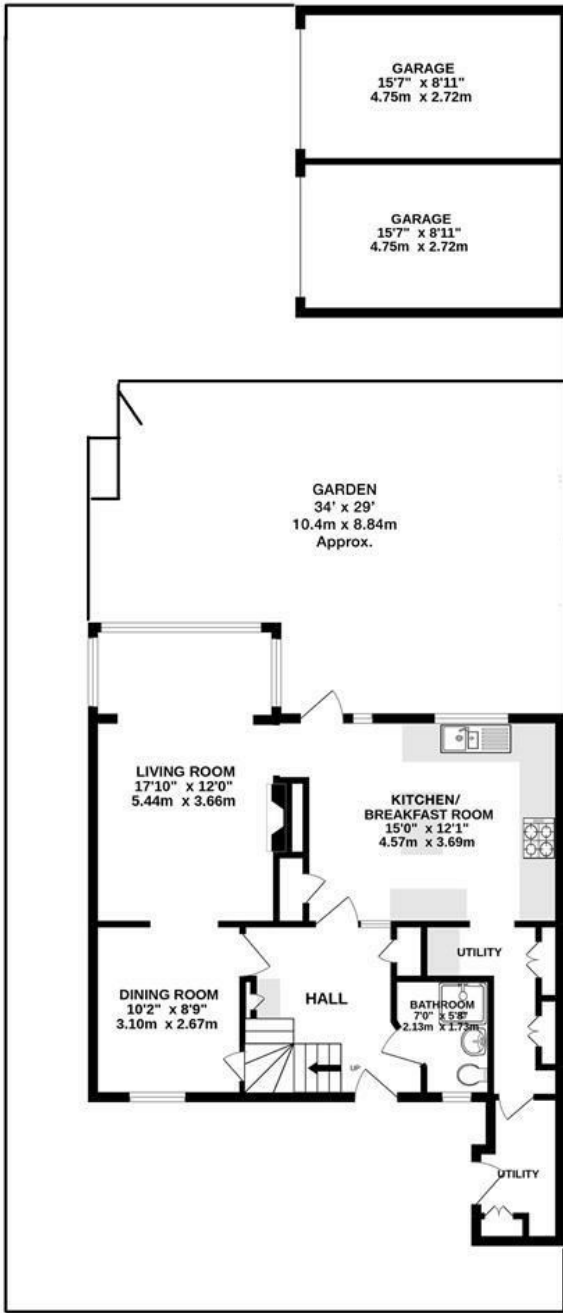
Guide Price

£1,300,000

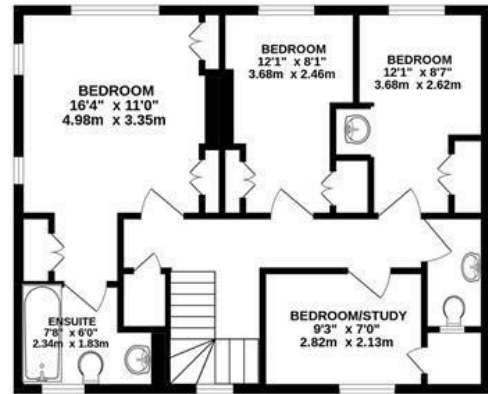
Brimstone Cottage is a delightful period property thought to date from 1746. Downstairs comprises a double reception room, bespoke country kitchen, utility and a shower/WC. Upstairs features principal bedroom with en-suite bathroom, 3 further bedrooms and a separate WC. A vine-topped pergola, perfect for al fresco dining, overlooks a delightful secluded west facing walled cottage garden. Situated in a peaceful yet central location in Thames Ditton village, a short walk from train, shops and schools. The property unusually benefits two privately owned garages to the rear.

- Period house dating from 1746
- Master bedroom with en-suite bathroom
- Three further bedrooms
- Secluded west facing walled garden
- 2 private garages to rear
- Double reception room
- Downstairs Shower/WC
- Bespoke country kitchen
- Central village location, close to schools & rail
- Council Tax Band: F

Floor Plan

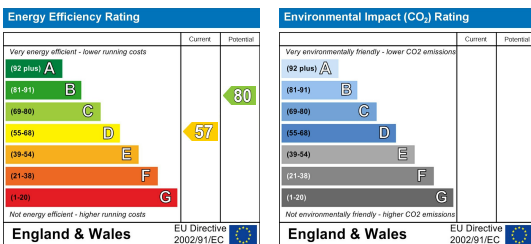


CHURCH LANE, THAMES DITTON
INTERNAL FLOOR AREA (APPROX.)
1605 sq ft/ 149.1 sq m
Including Garages



Whilst every attempt has been made to ensure the accuracy of this floor plan, measurement of doors, windows, rooms and any other items are approximate and no responsibility is taken for any error, omission or mis-statement. Made with Metropix © 2022.

Energy Efficiency Graph



These particulars, whilst believed to be accurate are set out as a general outline only for guidance and do not constitute any part of an offer or contract. Intending purchasers should not rely on them as statements of representation of fact, but must satisfy themselves by inspection or otherwise as to their accuracy. No person in this firm's employment has the authority to make or give any representation or warranty in respect of the property.