

HJC

HIGHER VALUES



Summer Road

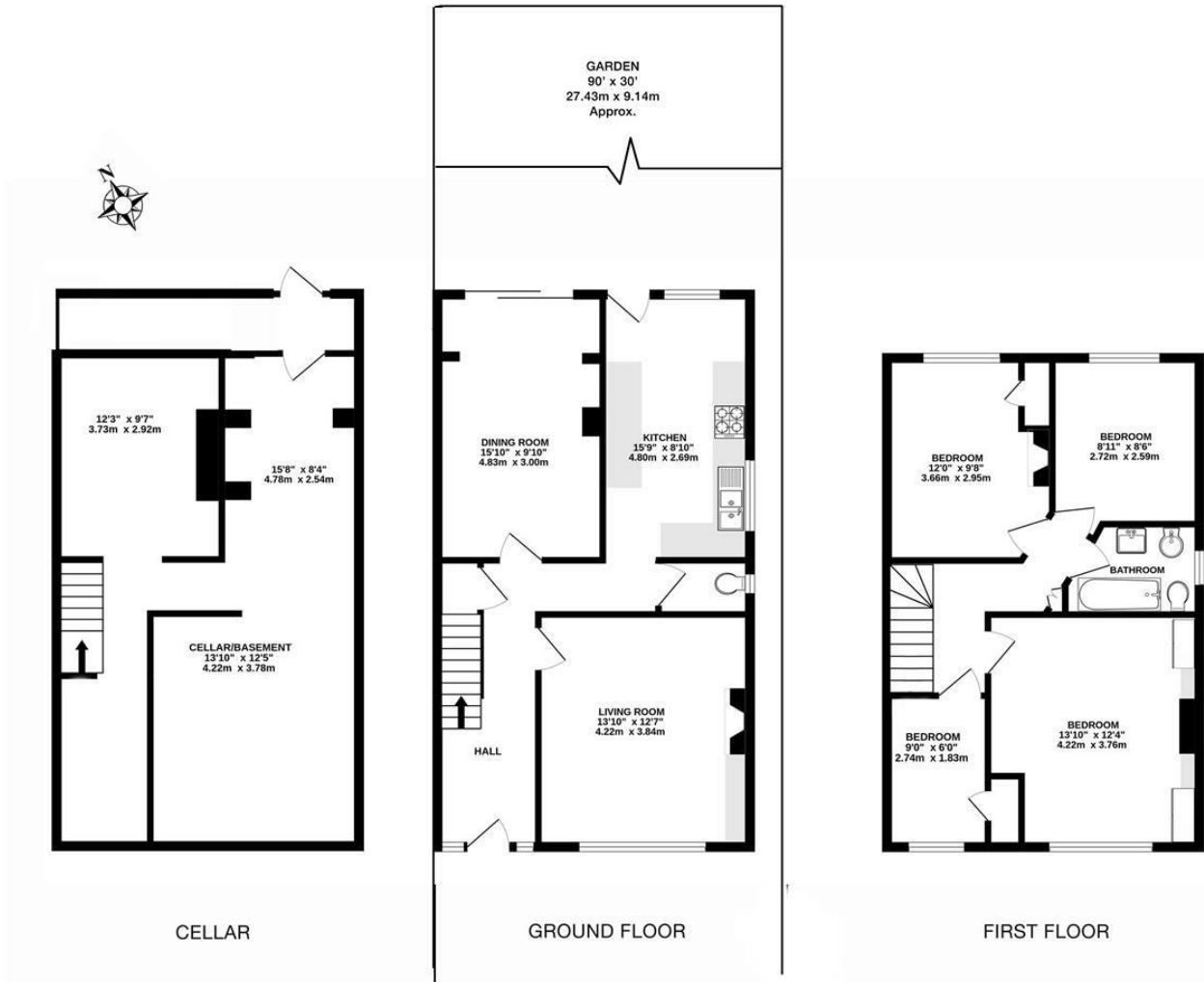
Thames Ditton, KT7 0QP

Guide Price £799,950

A great opportunity in the heart of Thames Ditton village, this 4 bedroom, 2 reception well proportioned semi-detached family home requires complete refurbishment and sits on an ample plot, with a 90ft garden and off street parking. With a large loft and extensive cellar that extends the full floorplan of the property, there's huge scope to put your own stamp on (STPP). Sold with the added benefit of solar panels on the roof, reducing the water heating cost. No onward chain.

- Semi-detached
- Heart of Thames Ditton village
- Off street parking
- No onward chain
- Solar panels
- 4 bedroom, 2 reception
- 90ft garden
- Extensive cellar
- In need of full modernisation
- Council tax band E.

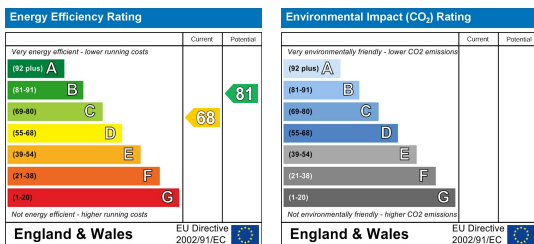
Floor Plan



Whilst every attempt has been made to ensure the accuracy of this floor plan, measurement of doors, windows, rooms and any other items are approximate and no responsibility is taken for any error, omission or mis-statement. Made with Metropix © 2022.

SUMMER ROAD, THAMES DITTON
 MAIN HOUSE FLOOR AREA (APPROX.) 1155 sq ft/ 107.3 sq m
 CELLAR AREA 550 sq ft/ 51.1 sq m

Energy Efficiency Graph



These particulars, whilst believed to be accurate are set out as a general outline only for guidance and do not constitute any part of an offer or contract. Intending purchasers should not rely on them as statements of representation of fact, but must satisfy themselves by inspection or otherwise as to their accuracy. No person in this firm's employment has the authority to make or give any representation or warranty in respect of the property.