

HJC

HIGHER VALUES



Weston Green Road

Thames Ditton, KT7 0JG

Offers In Excess Of
£750,000

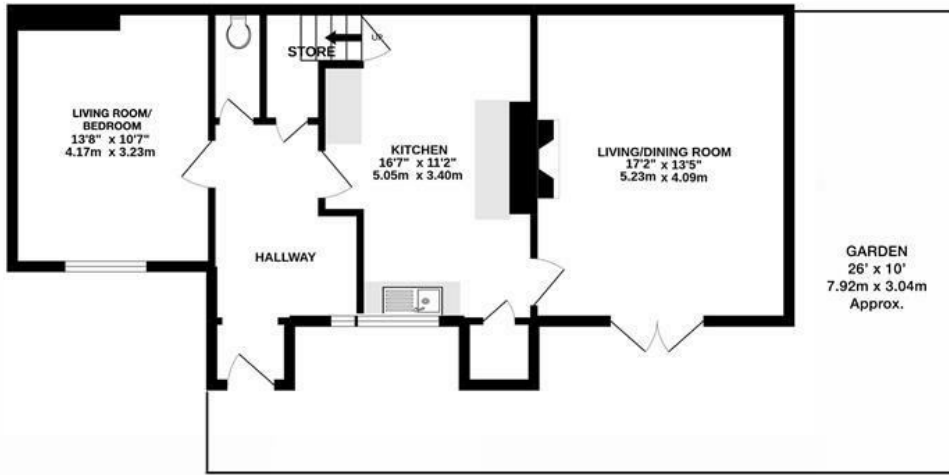
This 3 bedroom characterful cottage is located in the gated grounds of The Newlands, in the Weston Green area of Thames Ditton. Requiring complete modernisation, the ground floor comprises a considerable entrance hall, off which is a WC and under stairs cupboard, two separate living rooms and a kitchen. The first floor has three well-proportioned rooms and a bathroom, whilst outside to front and to side are private patio areas. Newlands Cottage further benefits from no onward chain and is close proximity to Esher and Thames Ditton rail links, excellent schools and village centre.

- Character property in grounds of The Newlands
- Large reception room
- Private courtyard garden
- Close to Thames Ditton & Esher stations
- Council Tax Band: D
- 3 bedrooms
- In need of full modernisation
- No onward chain
- Close to excellent schools
- EPC Rating: D

Floor Plan



FIRST FLOOR

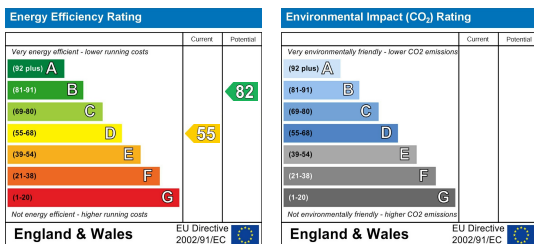


GROUND FLOOR

Whilst every attempt has been made to ensure the accuracy of this floor plan, measurement of doors, windows, rooms and any other items are approximate and no responsibility is taken for any error, omission or mis-statement. Made with Metropix © 2022.

WESTON GREEN ROAD, THAMES DITTON
 INTERNAL FLOOR AREA (APPROX.)
 1464 sq ft/ 136.01 sq m

Energy Efficiency Graph



These particulars, whilst believed to be accurate are set out as a general outline only for guidance and do not constitute any part of an offer or contract. Intending purchasers should not rely on them as statements of representation of fact, but must satisfy themselves by inspection or otherwise as to their accuracy. No person in this firm's employment has the authority to make or give any representation or warranty in respect of the property.