

HJC

HIGHER VALUES



Weston Park Close

Thames Ditton, KT7 0HJ

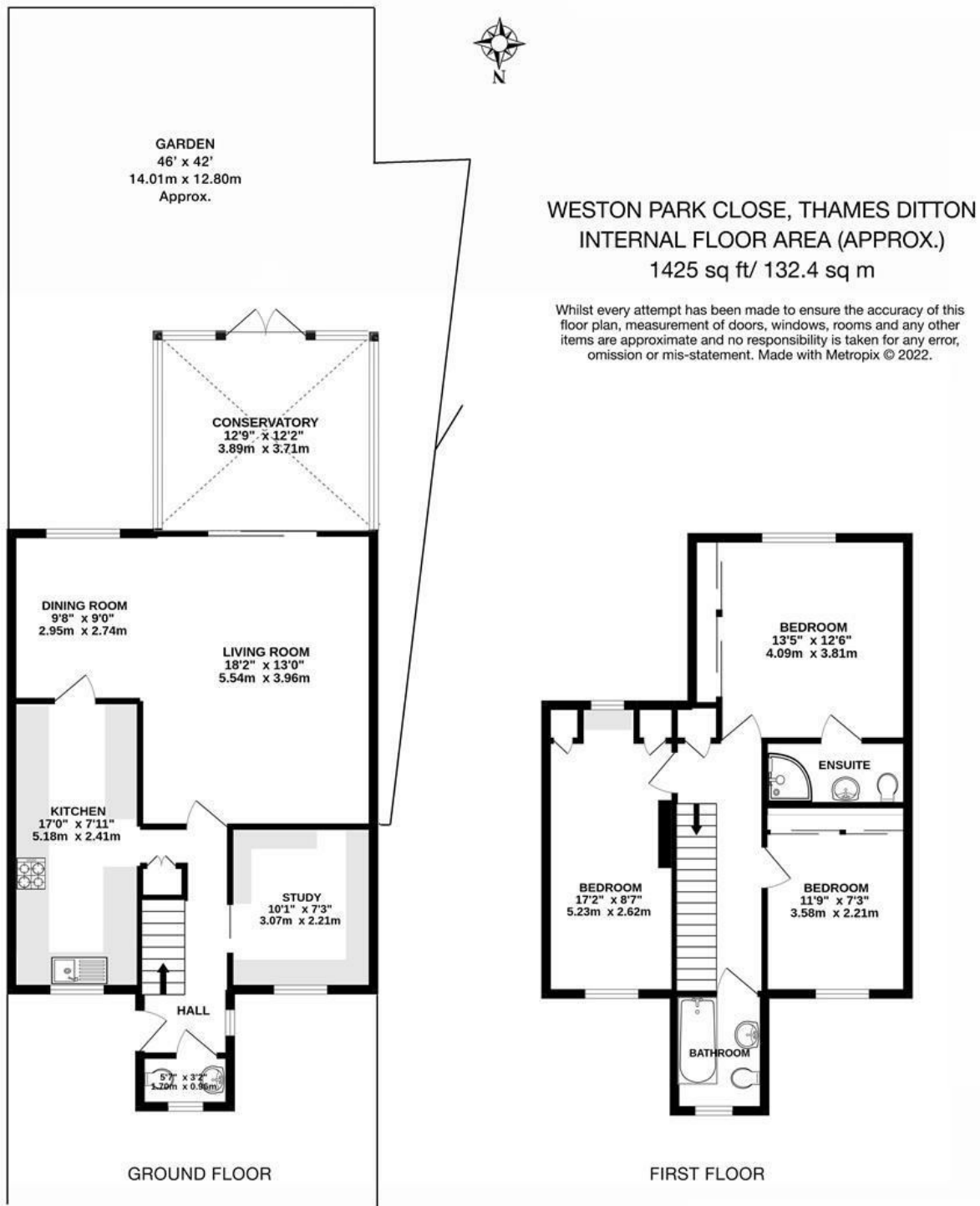
£915,000

A well-presented 3 bedroom, 2 bath/shower room end of terrace family home, much improved by the current owners, set at the end of a cul-de-sac close to Weston Green, Esher and Thames Ditton train stations.

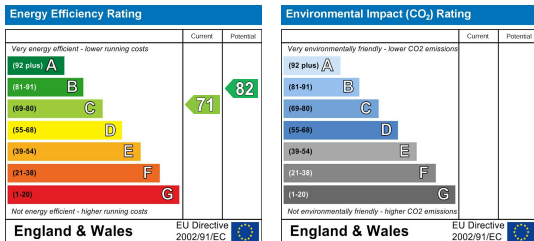
The main living room has an additional dining area which opens to a 17ft kitchen. With a further room to front, currently a fitted study, and a downstairs WC and storage cupboard. A sunny conservatory to rear opens onto a south-facing garden with gated side access, patio area and shed. On the first floor are three bedrooms, all with built-in wardrobe storage and one with an en-suite shower room, along with a family bathroom and access to the loft. Off street parking for 2 cars, potential to extend (STPP) and no onward chain. Council Tax £3,119 per annum, Band F. Elmbridge Borough Council.

- End of terrace family home
- South-facing garden
- Walk to two train stations
- 2 bath/shower rooms
- No onward chain
- 2 Reception rooms and conservatory
- Cul-de-sac location
- Three bedrooms
- Off-street parking for 2 cars
- Close to Weston Green

Floor Plan



Energy Efficiency Graph



These particulars, whilst believed to be accurate are set out as a general outline only for guidance and do not constitute any part of an offer or contract. Intending purchasers should not rely on them as statements of representation of fact, but must satisfy themselves by inspection or otherwise as to their accuracy. No person in this firm's employment has the authority to make or give any representation or warranty in respect of the property.