

HJC

HIGHER VALUES



Gloucester Close

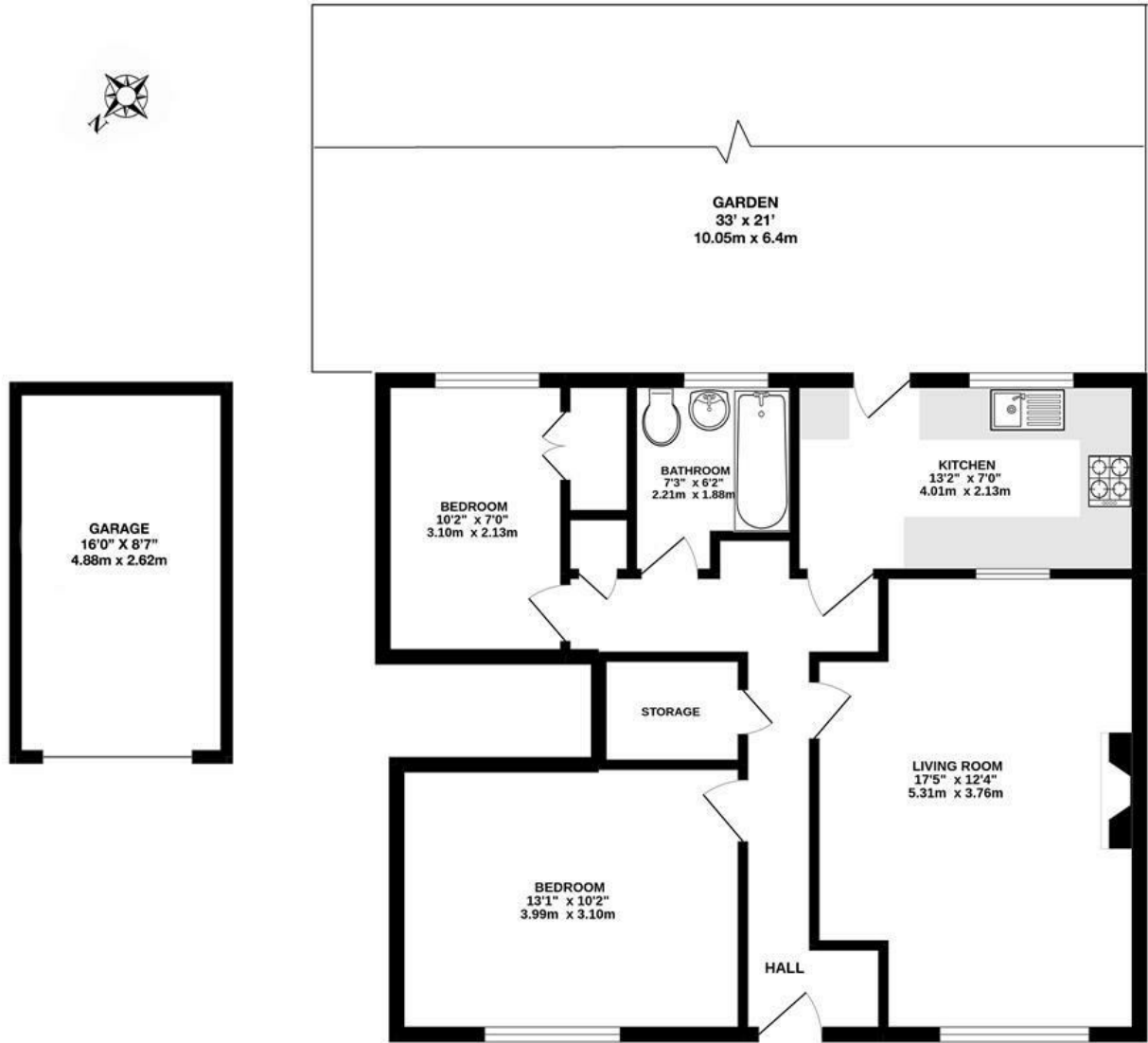
Thames Ditton, KT7 0EW

£460,000

A large 2 bedroom ground floor maisonette in a quiet close opposite Giggs Hill cricket green, within walking distance of Thames Ditton village, station and outstanding schools. The property further benefits from a private south facing garden and garage. It comes with a share of the freehold and no onward chain. Council tax band D £2,159 per annum. Elmbridge Borough Council. Lease remaining: 936 years.

- Ground floor maisonette
- Modern fitted kitchen
- 2 bedrooms
- Share of freehold
- Opposite the cricket green
- Private south facing rear garden
- Large reception room with beautiful parquet flooring
- Garage
- Walking distance to the village centre
- No onward chain

Floor Plan

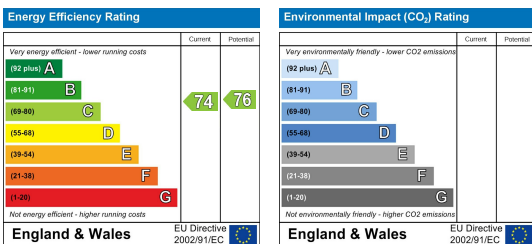


GARDEN MAISONETTE

Whilst every attempt has been made to ensure the accuracy of this floor plan, measurement of doors, windows, rooms and any other items are approximate and no responsibility is taken for any error, omission or mis-statement. Made with Metropix © 2022.

GLoucester Close, THAMES DITTON
INTERNAL FLOOR AREA (APPROX.) 675 sq ft/ 62.7 sq m
Excluding Garage

Energy Efficiency Graph



These particulars, whilst believed to be accurate are set out as a general outline only for guidance and do not constitute any part of an offer or contract. Intending purchasers should not rely on them as statements of representation of fact, but must satisfy themselves by inspection or otherwise as to their accuracy. No person in this firm's employment has the authority to make or give any representation or warranty in respect of the property.