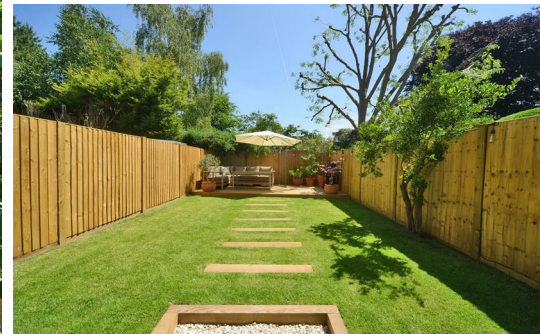


HJC

HIGHER VALUES



Weston Park

Thames Ditton, KT7 0HW

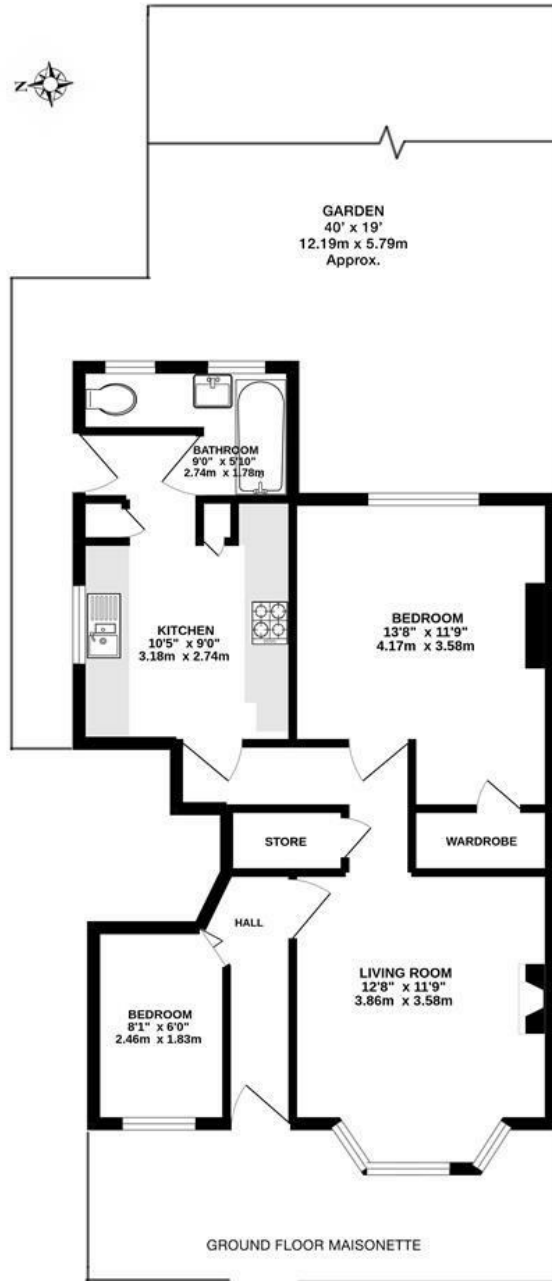
£475,000

LAUNCH DAY SATURDAY 16TH JULY A beautifully presented ground floor garden maisonette, located in a sought-after road off Weston Green in Thames Ditton. This home has been maintained to a high standard by the current owners and offers real kerb appeal with a pretty front garden and a wonderful 40ft private rear garden with raised decked seating area. Internally, the living room has original period features such as an open fireplace, cornicing and bay window. It further offers two bedrooms, kitchen, tiled modern bathroom and plenty of built-in storage throughout. Equidistant from both Thames Ditton and Esher stations, within local school catchments, close to some stunning landscapes, good pubs, the River Thames and easy access to the A3.

Tenure: Leasehold. Elmbridge Borough Council Band: D, Lease: 962 years remaining. Ground Rent: £75 per annum. Next Ground Rent review date: April 2035. Buildings Insurance: £318.76 per annum.

- Stunning 40ft private garden
- Period maisonette
- Excellent condition throughout
- Weston Green location
- Ground floor
- Two bedrooms
- Long lease of in excess of 900 years
- Close to local amenities

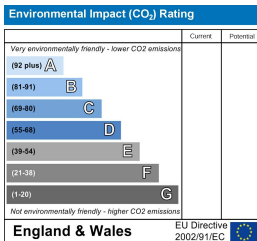
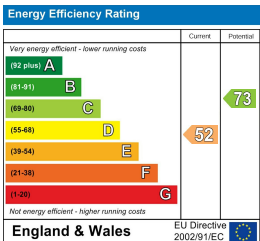
Floor Plan



Whilst every attempt has been made to ensure the accuracy of this floor plan, measurement of doors, windows, rooms and any other items are approximate and no responsibility is taken for any error, omission or mis-statement. Made with Metropix © 2022.

WESTON PARK, THAMES DITTON
INTERNAL FLOOR AREA (APPROX.)
625 sq ft/ 58.0 sq m

Energy Efficiency Graph



These particulars, whilst believed to be accurate are set out as a general outline only for guidance and do not constitute any part of an offer or contract. Intending purchasers should not rely on them as statements of representation of fact, but must satisfy themselves by inspection or otherwise as to their accuracy. No person in this firm's employment has the authority to make or give any representation or warranty in respect of the property.