

# HJC

HIGHER VALUES



## Longmead Road

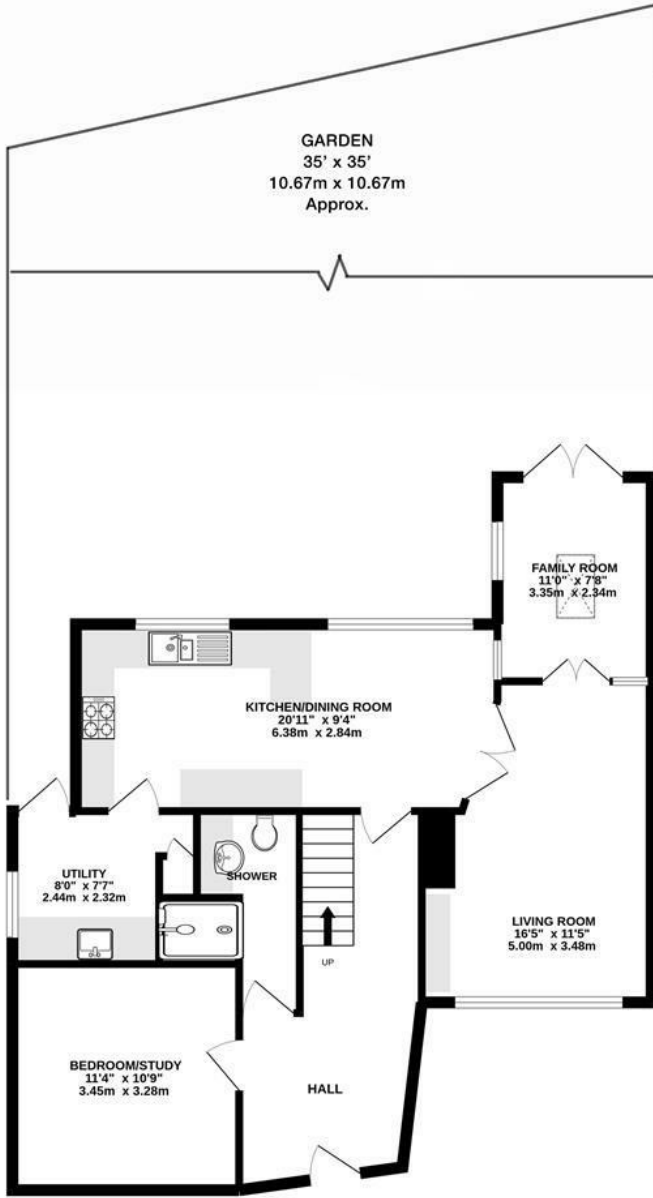
Thames Ditton, KT7 0JF

Guide Price £625,000

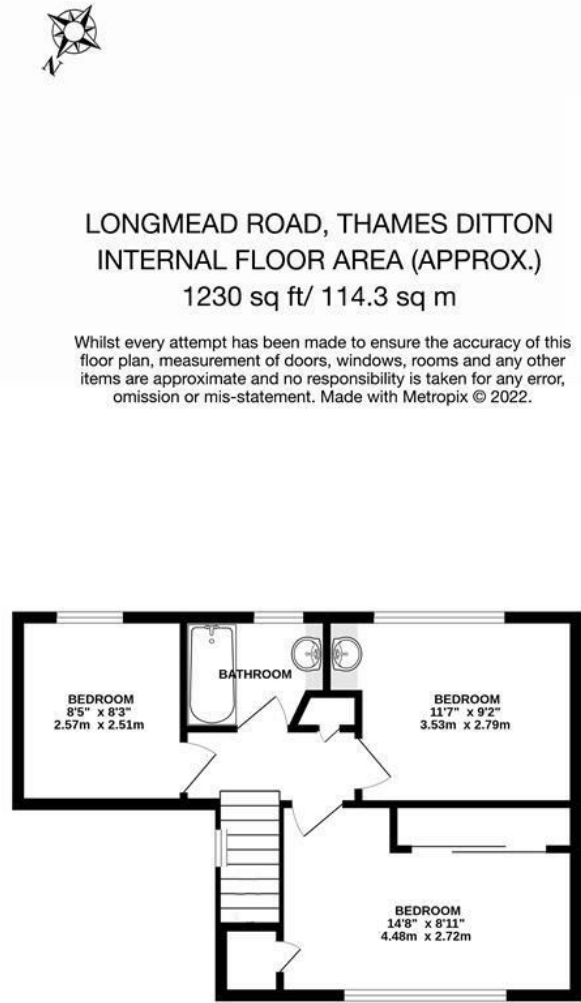
A four bedroom end of terrace family home on this ever-popular development, close to Thames Ditton train station, the village and a host of schools. The ground floor comprises a spacious hallway which leads to a kitchen/dining room, opening to a generous utility room. The principle living room overlooks the garden to the front and leads to a family room which opens on to the rear south facing garden. Also on the ground floor is an additional room situated next to a shower room, which can be a downstairs bedroom, further living room or large study. Upstairs are three double bedrooms and a family bathroom. The rear garden benefits from side access, mature trees and a garden shed. Elmbridge Council Tax Band D. Tenure: Freehold.

- 4 bedrooms
- Open plan kitchen/dining room
- 2 bath/shower rooms
- Front and rear gardens
- Close to Thames Ditton station
- Designed by award winning architect Eric Lyons in 1952
- Extended on the ground floor
- Utility room
- Ample street parking
- Close to a host of schools

# Floor Plan



GROUND FLOOR

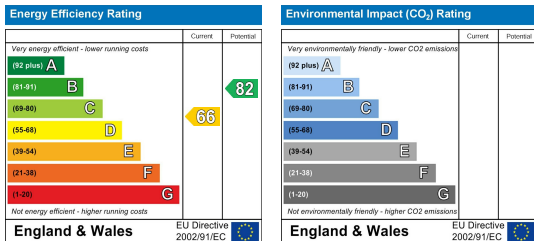


FIRST FLOOR

LONGMEAD ROAD, THAMES DITTON  
 INTERNAL FLOOR AREA (APPROX.)  
 1230 sq ft/ 114.3 sq m

Whilst every attempt has been made to ensure the accuracy of this floor plan, measurement of doors, windows, rooms and any other items are approximate and no responsibility is taken for any error, omission or mis-statement. Made with Metropix © 2022.

## Energy Efficiency Graph



These particulars, whilst believed to be accurate are set out as a general outline only for guidance and do not constitute any part of an offer or contract. Intending purchasers should not rely on them as statements of representation of fact, but must satisfy themselves by inspection or otherwise as to their accuracy. No person in this firm's employment has the authority to make or give any representation or warranty in respect of the property.