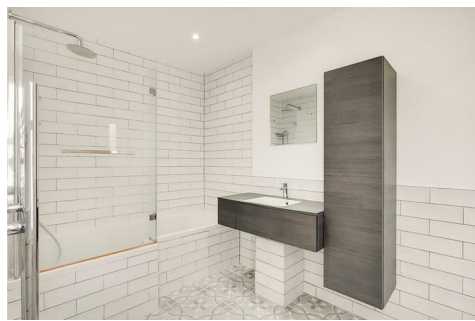


L·D·B

SALES, LETTINGS
& MANAGEMENT



FLAT 2, 109A FULHAM PALACE ROAD, LONDON, W6 8JA

LDB ARE PROUD TO PRESENT THIS RECENTLY RENOVATED 2 BEDROOM FLAT IN HAMMERSMITH. THE FLAT HAS BEEN RENOVATED TO A HIGH STANDARD WITH A FULLY INTEGRATED KITCHEN WITH ALL APPLIANCES INCLUDING DISHWASHER.

THE FLAT BENEFITS FROM 2 DOUBLE BEDROOMS WITH BUILT IN WARDROBES, A MODERN BATHROOM AND ALL ROOMS ARE FINISHED WITH NEUTRAL WHITE WALLS AND REAL WOOD FLOORING.

LOCATED OFF FULHAM PALACE ROAD IN HAMMERSMITH THE FLAT IS A SHORT WALK TO HAMMERSMITH BROADWAY WITH ACCESS TO THE PICCADILLY LINE, HAMMERSMITH AND CITY LINE AND CIRCLE LINE.

- RECENTLY REFURBISHED
- WOODEN FLOORS THROUGHOUT
- DOUBLE GLAZING
- EXCELLENT LOCATION
- VIDEO AVAILABLE
- RENT INCLUDES ELECTRICITY BILL

£2,350 PCM

