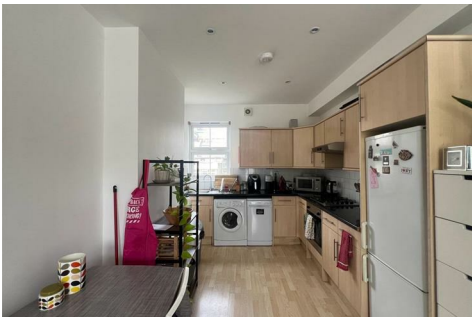


L·D·B

SALES, LETTINGS
& MANAGEMENT



FIRST FLOOR FLAT 44 LOCHALINE STREET, HAMMERSMITH, LONDON W6 9SH

BACK TO THE MARKET, THIS BRIGHT, SPACIOUS AND WELL-LOCATED TWO-BED, TWO-BATH IS IDEAL FOR TWO SHARERS LOOKING FOR IDEAL CONNECTIONS ACROSS LONDON.

LOCATED JUST OPPOSITE CHARING CROSS HOSPITAL, THIS FLAT FEATURES TWO BIG DOUBLE BEDROOMS, A SPACIOUS, OPEN-PLAN KITCHEN/LIVING ROOM, TWO EN-SUITE BATHROOMS, PLENTY OF STORAGE AND A SHARED REAR GARDEN.

LOCHALINE STREET BOASTS PLENTY OF FEATURES FOR ANY TENANT. IT'S A PICTURESQUE TREE-LINED STREET WITH QUICK ACCESS TO THE RIVER, AS WELL AS BEING JUST MOMENTS AWAY FROM HAMMERSMITH BROADWAY, WHICH HAS A WHOLE HOST OF SHOPS, RESTAURANTS, PUBS AND, OF COURSE, FOUR DIFFERENT UNDERGROUND LINES TO CHOOSE FROM, GETTING YOU ANYWHERE YOU WANT ACROSS LONDON.

MAKE SURE TO CALL LDB NOW TO AVOID MISSING OUT.

- SHARED REAR GARDEN
- WOOD FLOORING AND CARPETS
- CLOSE TO TRANSPORT LINKS
- TWO DOUBLE BEDROOMS
- OPEN-PLAN KITCHEN LIVING ROOM
- TWO EN-SUITE BATHROOMS

£2,375 PER CALENDAR MONTH

