



59 Elm Grove

Barnham, PO22 0HJ

Price £700,000

SUBSTANTIAL FAMILY HOME CLOSE TO SCHOOLS, SHOP & MAINLINE TRAIN STATION. VIDEO TOUR AVAILABLE.

Spacious entrance hall, two front-facing reception rooms with feature fireplaces and bay windows, stylish refitted kitchen / dining / family room with patio doors to rear garden, large utility room with cloakroom and access to rear garden. Upstairs there are four double bedrooms, one with ensuite bathroom and separate shower, additional ensuite shower room, plus modern family bathroom. The property has a driveway leading to the front with parking for several vehicles and is surrounded by garden on three sides. Situated a short walk from central Barnham Village. Tenure - freehold. Council Tax Band F.

Viewing

Please contact us on 01243 551122 if you wish to arrange a viewing appointment for this property or require further information.

- Detached house
- Four double bedrooms
- Large modern kitchen / dining / family room
- Two reception rooms
- Spacious utility room plus cloakroom
- Two ensuite bath/shower rooms
- Family bathroom
- Front & rear gardens
- Parking for several vehicles
- Close to Barnham Village, shops, schools, amenities & transport links



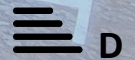
4



3

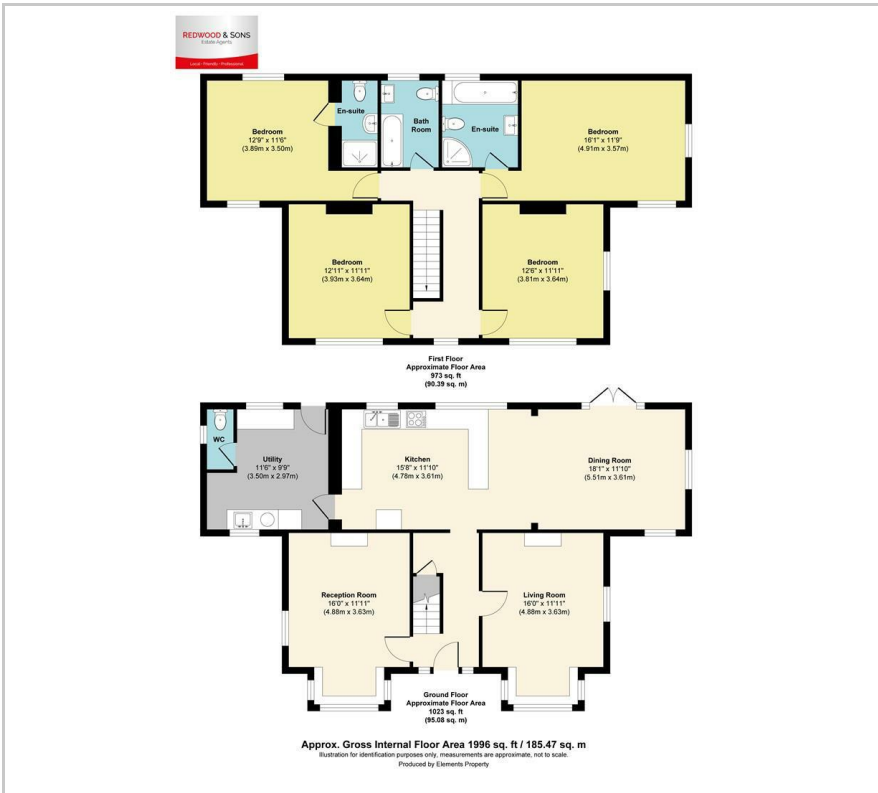


3



D

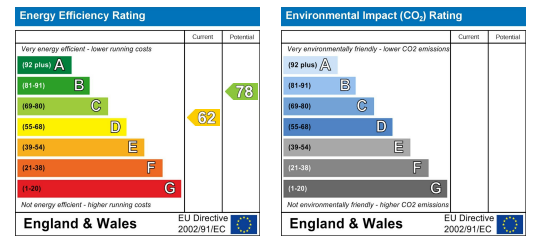
Floor Plan



Area Map



Energy Efficiency Graph



These particulars, whilst believed to be accurate are set out as a general outline only for guidance and do not constitute any part of an offer or contract. Intending purchasers should not rely on them as statements of representation of fact, but must satisfy themselves by inspection or otherwise as to their accuracy. No person in this firm's employment has the authority to make or give any representation or warranty in respect of the property.

20 The Square, Barnham, West Sussex, PO22 0HB

01243 551122 office@redwoodandsons.co.uk www.redwoodandsons.co.uk