



Chambers Lane NW10

Parkheat
Sold on Service





Chambers Lane, NW10, £1,399,000, Freehold

Brent Band F

- Substantial late 1940's house
- Semi-detached
- Large plot
- Potential to extend to create significant family home (STPP)
- Gated driveway
- Envable position, bordering the Dobree Estate
- Standing at an impressive 2306 sq ft
- Stunning 126 ft east facing garden
- Close to amenities in Kensal Rise
- EPC: Rating F / Council Tax: Brent band F



Parkheath
Sold on Service

Belsize Park/Hampstead
208 Haverstock Hill
NW3 2AG
Sales 020 7431 1234
Lettings 020 7431 3104
nw3@parkheath.com

South/West Hampstead
192 West End Lane
NW6 1SG
Sales & Lettings
Tel 020 7794 7111
192@parkheath.com

Kensal Rise
54-56 Chamberlayne Rd
NW10 3JH
Tel 020 8960 4845
kensal@parkheath.com

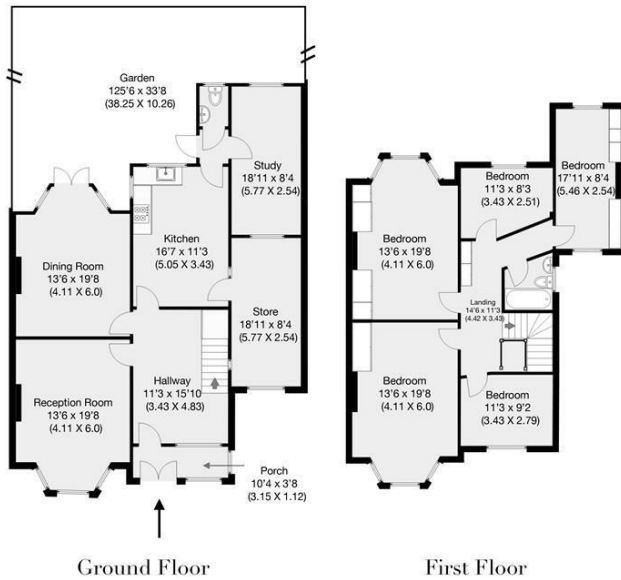
Property Management
192 West End Lane
NW6 1SG
020 7433 6174
pm@parkheath.com

www.parkheath.com



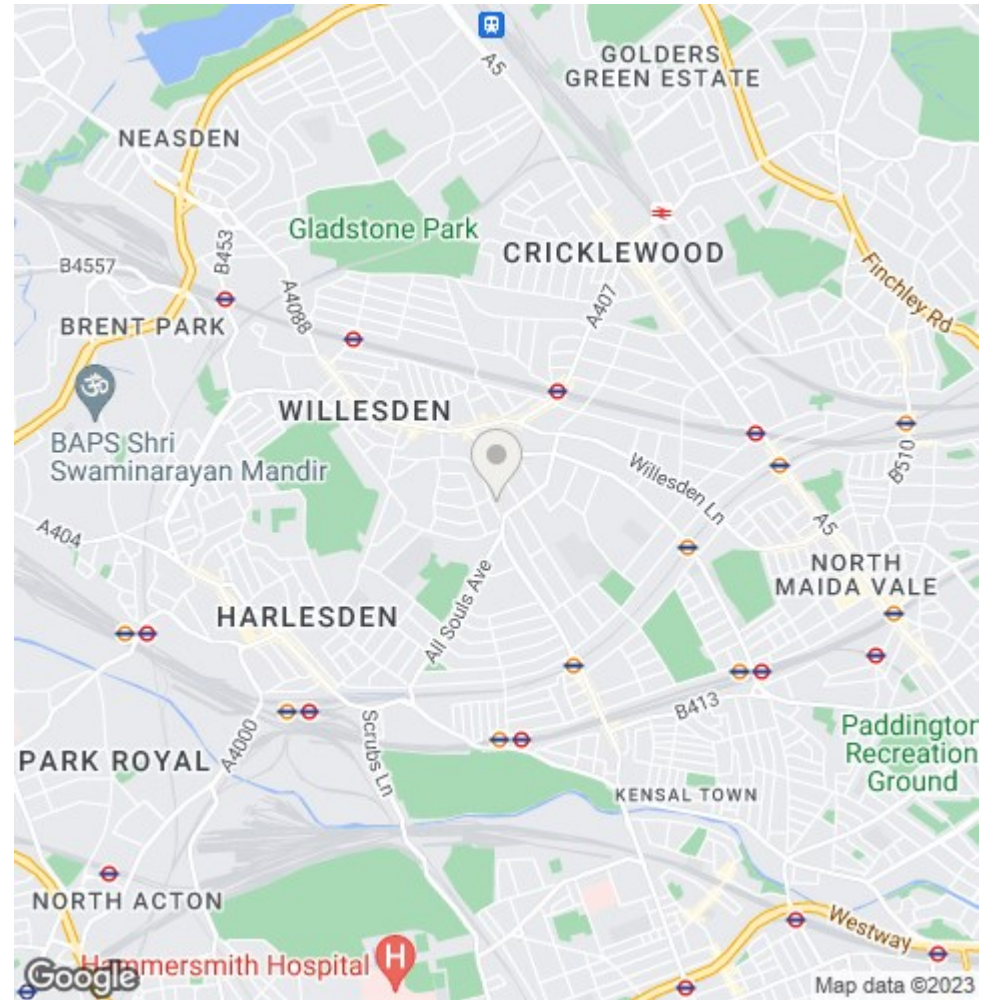
Chambers Lane, London, NW10

Approximate Gross Internal Area 214.5 sqm / 2309 sqft



THIS FLOOR PLAN IS PRODUCED FOR PARKHEATH SUBMITTED BY ARCHIMEDIA web: www.archi-media.co.uk

Whilst every attempt has been made to ensure the accuracy of the floor plan contained herein, measurements of doors, windows and rooms are approximate and no responsibility is taken for any error, omission or misstatement. These plans are for representation purposes only and should be used as such by any prospective buyer or lessee. Specifically no guarantee is given on the gross internal floor area of the property if quoted on this plan and any figures given is initial guidance only and should be treated as such.



The particulars do not constitute part of an offer or contract. The particulars, including text, photographs and plans, are for the guidance only of prospective purchasers/tenants and must not be relied upon as statements of fact. The descriptions provided therein represent the opinion of the author and whilst given in good faith should not be construed as statements of fact. Nothing in these particulars shall be deemed a statement that the property is in good condition or otherwise or that any services or facilities are in good working order. All measurements are approximate