

Parkheath

Sold on Service

Brondesbury Villas NW6

£3,750 PCM (£865 per week) - Brent Band E



4 double bedrooms

Ground floor

Wooden floors

Suitable for professional sharers

Council Tax: Brent band E

Garden

3 bathrooms (2 en suite)

Moments to Salusbury Road

Large living space

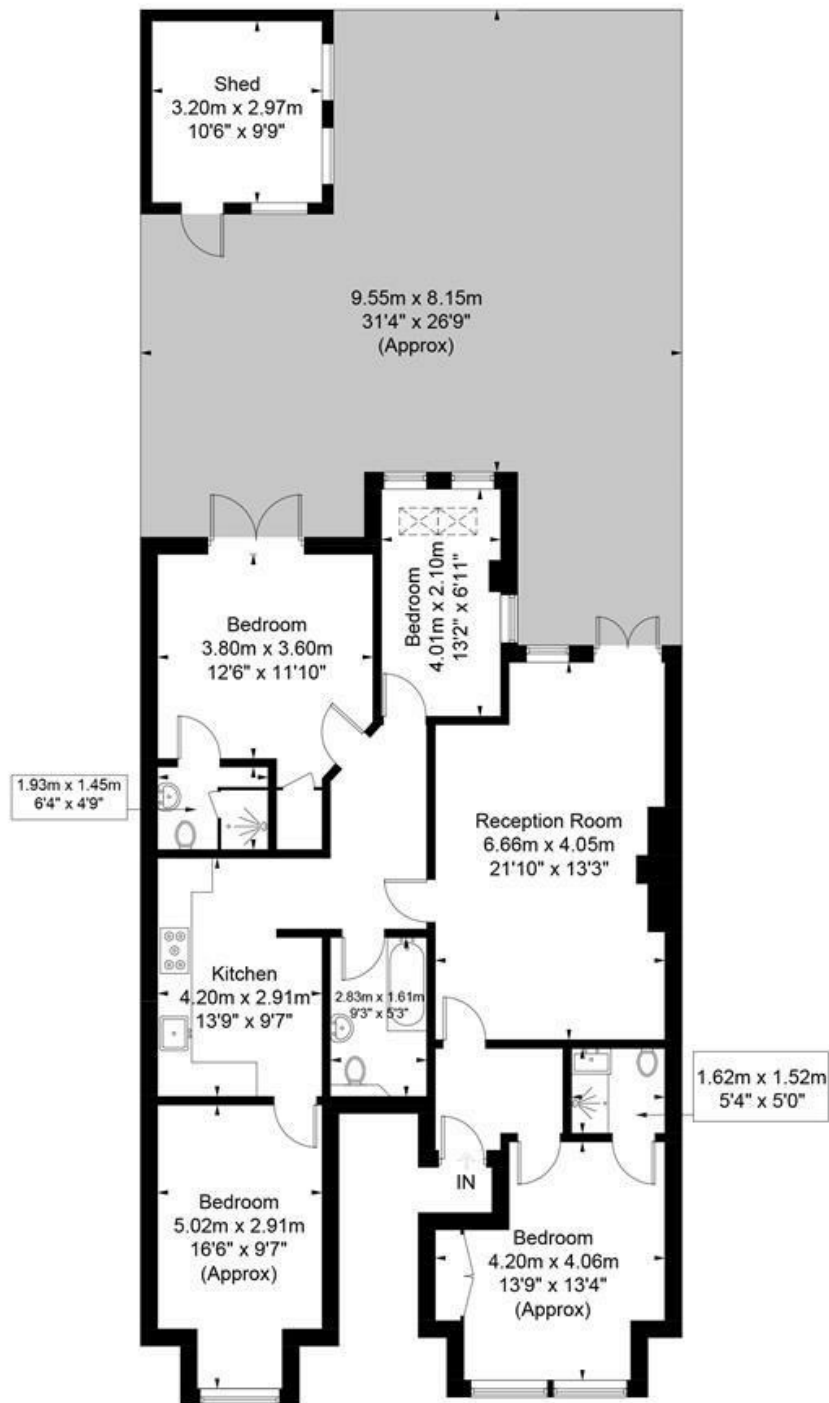
Kensal Rise Office 0208 960 4845

Brondesbury Villas

Approximate Gross Internal Area = 113.7 sq m / 1224 sq ft

Shed = 9.6 sq m / 103 sq ft

Total = 123.3 sq m / 1327 sq ft



Ground Floor

Illustration for identification purposes only, measurements are approximate, not to scale. FloorplansUsketch.com © 2018 (ID464432)
ELLIE CLAIRE PHOTOGRAPHY LTD

The particulars do not constitute part of an offer or contract. The particulars, including text, photographs and plans, are for the guidance only of prospective purchasers/tenants and must not be relied upon as statements of fact. The descriptions provided therein represent the opinion of the author and whilst given in good faith should not be construed as statements of fact. Nothing in these particulars shall be deemed a statement that the property is in good condition or otherwise or that any services or facilities are in good working order. All measurements are approximate