

# Parkheath

*Sold on Service*

---

**Kempe Road NW6**  
**£3,100 PCM (£715 per week) - Brent Band F**



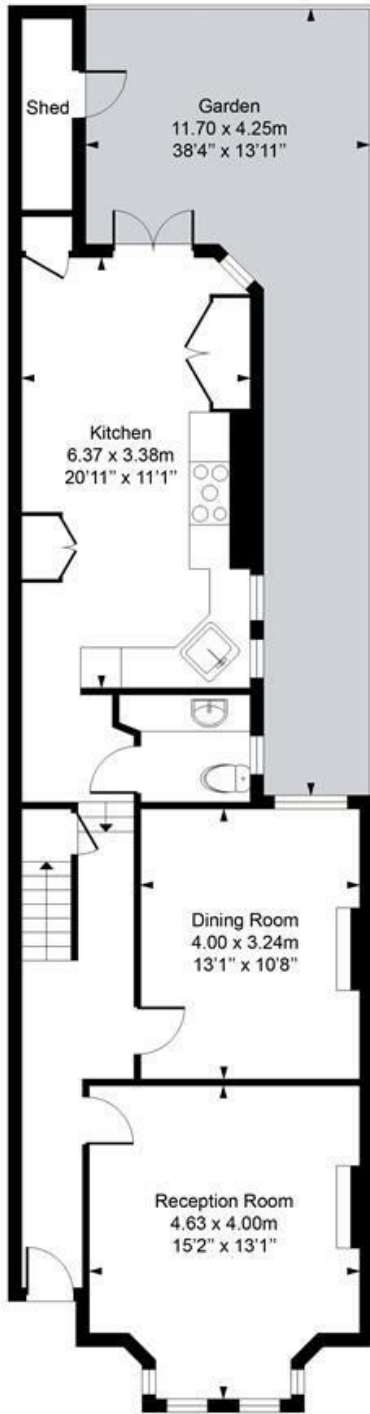
Attractive mid terrace Victorian house  
3 double bedrooms  
Kitchen/diner  
Arranged over 2 floors  
South facing patio garden

Moments to Queens Park  
2 reception rooms  
Period features and high ceilings  
Dedicated utility room with guest WC  
Excellent local primary schooling nearby

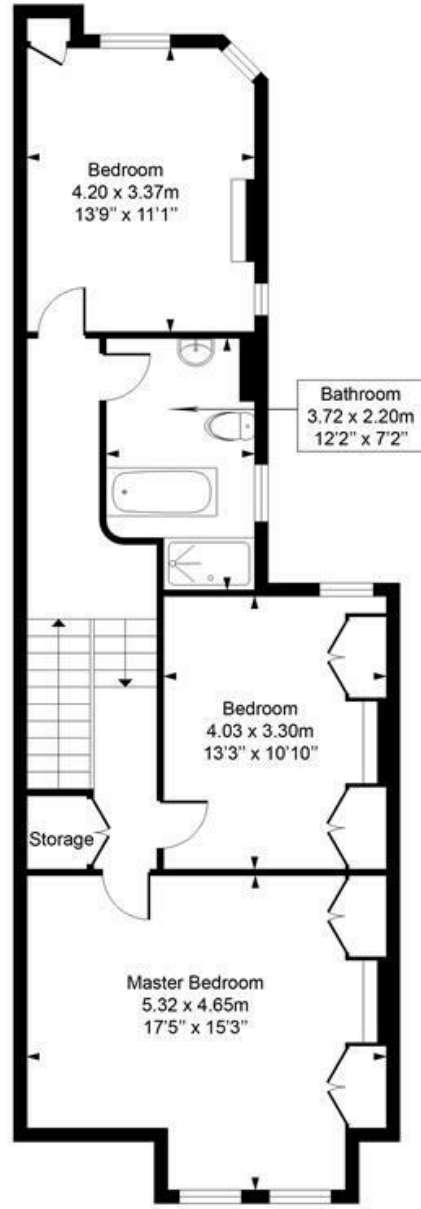
Kensal Rise Office 0208 960 4845

# Kempe Road

Approximate Gross Internal Area = 142.1 Sq m / 1529 sq ft



**Ground Floor**



**First Floor**

Measured in accordance with RICS guidelines. Every attempt is made to ensure accuracy  
However all measurements are approximate.

The floor plan is illustrative purposes only and is not to scale

ELLIE CLAIRE PHOTOGRAPHY LTD

[www.ellieclairephotography.com](http://www.ellieclairephotography.com)

The particulars do not constitute part of an offer or contract. The particulars, including text, photographs and plans, are for the guidance only of prospective purchasers/tenants and must not be relied upon as statements of fact. The descriptions provided therein represent the opinion of the author and whilst given in good faith should not be construed as statements of fact. Nothing in these particulars shall be deemed a statement that the property is in good condition or otherwise or that any services or facilities are in good working order. All measurements are approximate