



Second Avenue W10

Parkheat
Sold on Service





Second Avenue, W10

Asking Price £925,000, Freehold

London Borough of Westminster Band

- A truly stunning and larger than average Victorian built house located in the sought-after Queen's Park Estate Conservation Area
- 1066 Sq Ft/ 99 Sq M
- Stylishly modernised throughout and extended yet retaining period charm
- No expense has been spared in the quality and attention to detail
- Side return extended creating a fantastic kitchen diner linked to an open plan double reception room
- Two double bedrooms
- Beautiful contemporary bathroom with vaulted ceiling
- Newly landscaped west-facing rear garden
- Further benefits include herringbone parquet flooring, new sash windows and potential to convert the loft (stpp)
- Desirable location close to Queen's Park Underground station, Portobello Road and Notting Hill



Belsize Park
208 Haverstock Hill
NW3 2AG
Sales 020 7431 1234
Lettings 020 7431 3104
nw3@parkheath.com

South Hampstead
8a Canfield Gardens
NW6 3BS
Sales 020 7625 4567
Lettings 020 7644 0800
nw6@parkheath.com

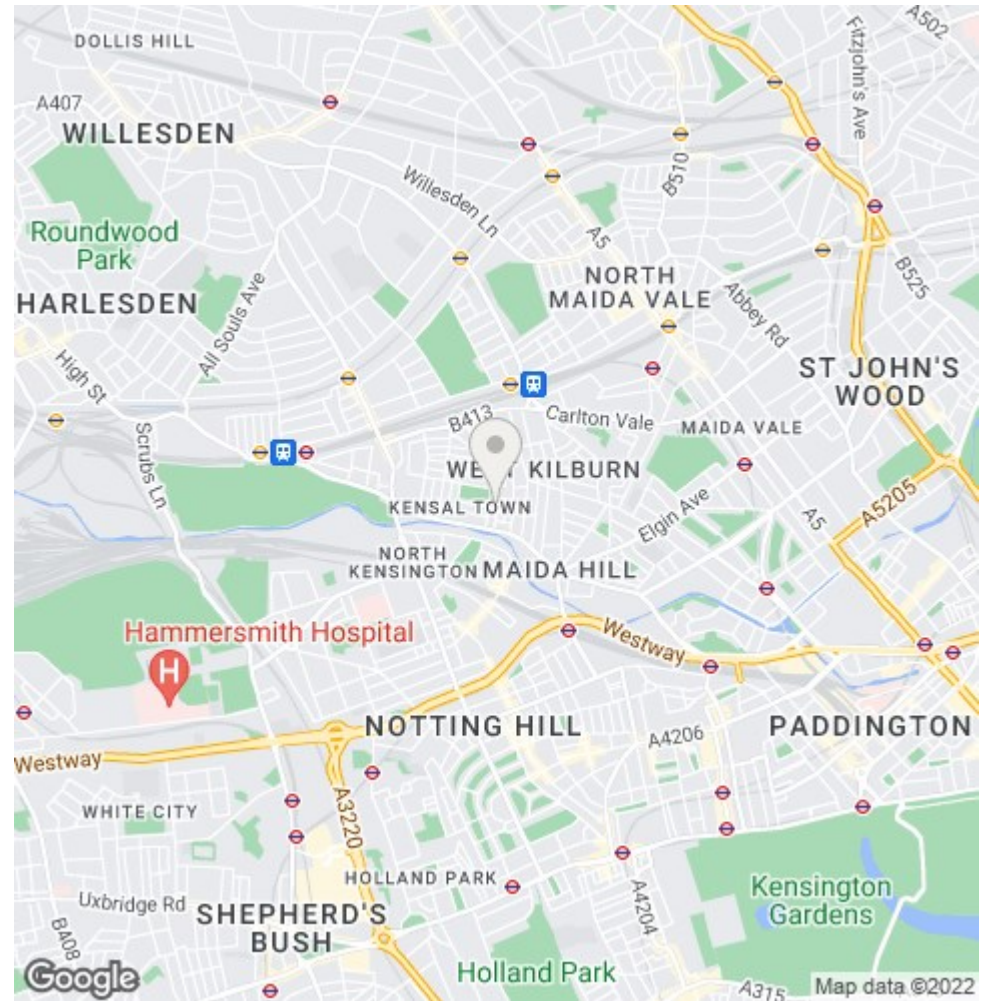
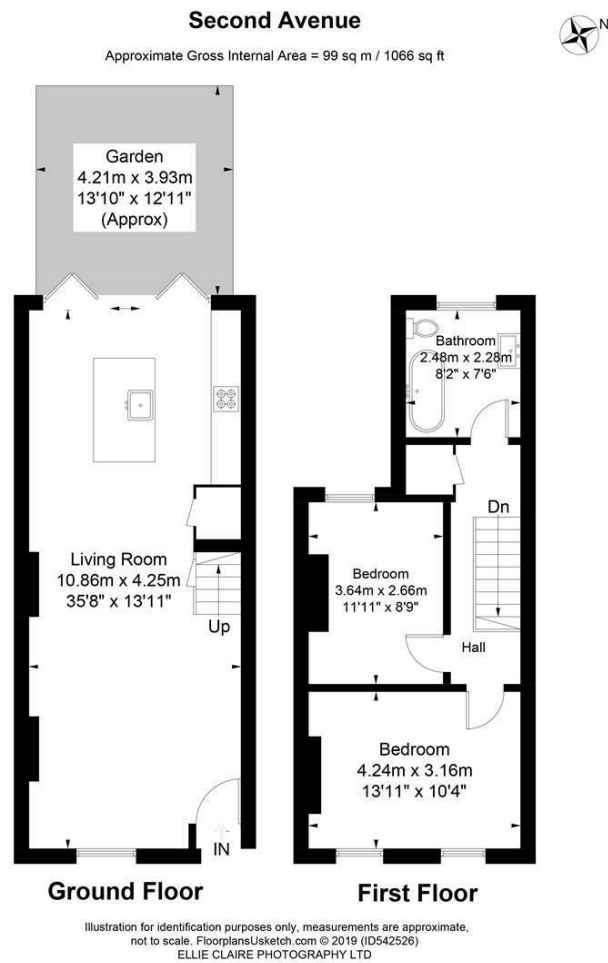
West Hampstead
192 West End Lane
NW6 1SG
Sales & Lettings
Tel 020 7794 7111
192@parkheath.com

Kentish Town
148 Kentish Town Rd
NW1 9QB
Tel 020 7485 0400
kt@parkheath.com

Kensal Rise
54-56 Chamberlayne Rd
NW10 3JH
Tel 020 8960 4845
kensal@parkheath.com

Property Management
192 West End Lane
NW6 1SG
020 7433 6174
pm@parkheath.com

Parkheath
Sold on Service



The particulars do not constitute part of an offer or contract. The particulars, including text, photographs and plans, are for the guidance only of prospective purchasers/tenants and must not be relied upon as statements of fact. The descriptions provided therein represent the opinion of the author and whilst given in good faith should not be construed as statements of fact. Nothing in these particulars shall be deemed a statement that the property is in good condition or otherwise or that any services or facilities are in good working order. All measurements are approximate