

Parkheath

Sold on Service

Allingham Court NW3

£3,250 PCM (£750 per week) - Camden Band F



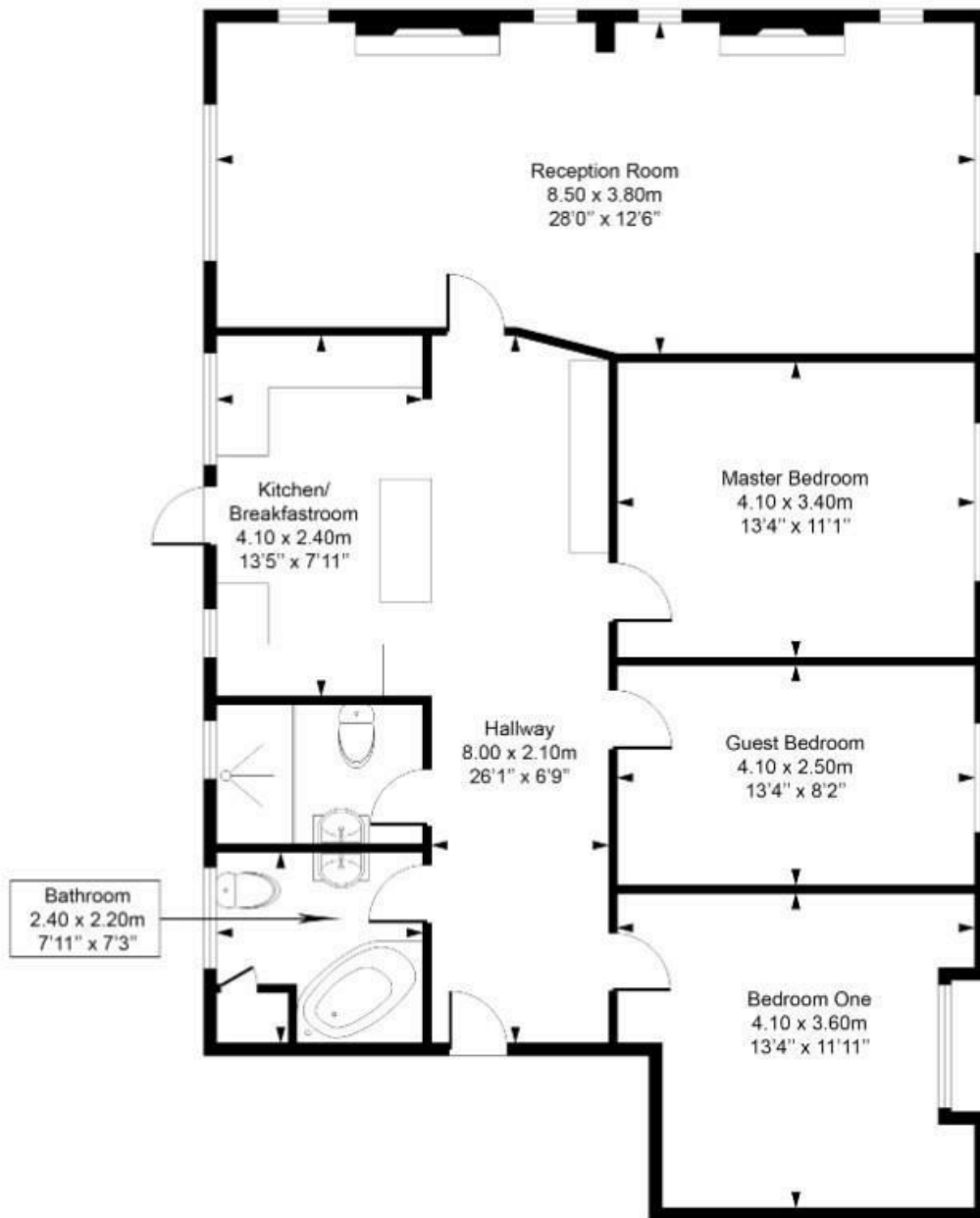
Beautiful 3 double bedroom apartment
Stunning kitchen/diner
Wooden floors and double glazing throughout
Set amongst the areas cafes and shops

Dual aspect reception
2 bathrooms
Moments to Belsize Park tube
EPC: Rating D, Council Tax: Camden band F

Belsize Park Office 020 7431 3104

Haverstock Hill

Approximate Gross Internal Area = 103.9 Sq m / 1118 sq ft



Second Floor

Measured in accordance with RICS guidelines. Every attempt is made to ensure accuracy

However all measurements are approximate.

The floor plan is illustrative purposes only and is not to scale

ELLIE CLAIRE PHOTOGRAPHY LTD

www.ellieclairephotography.com

The particulars do not constitute part of an offer or contract. The particulars, including text, photographs and plans, are for the guidance only of prospective purchasers/tenants and must not be relied upon as statements of fact. The descriptions provided therein represent the opinion of the author and whilst given in good faith should not be construed as statements of fact. Nothing in these particulars shall be deemed a statement that the property is in good condition or otherwise or that any services or facilities are in good working order. All measurements are approximate