

# Parkheath

*Sold on Service*

---

**Belsize Grove NW3**  
**£2,150 PCM (£496 per week) - Camden Band D**

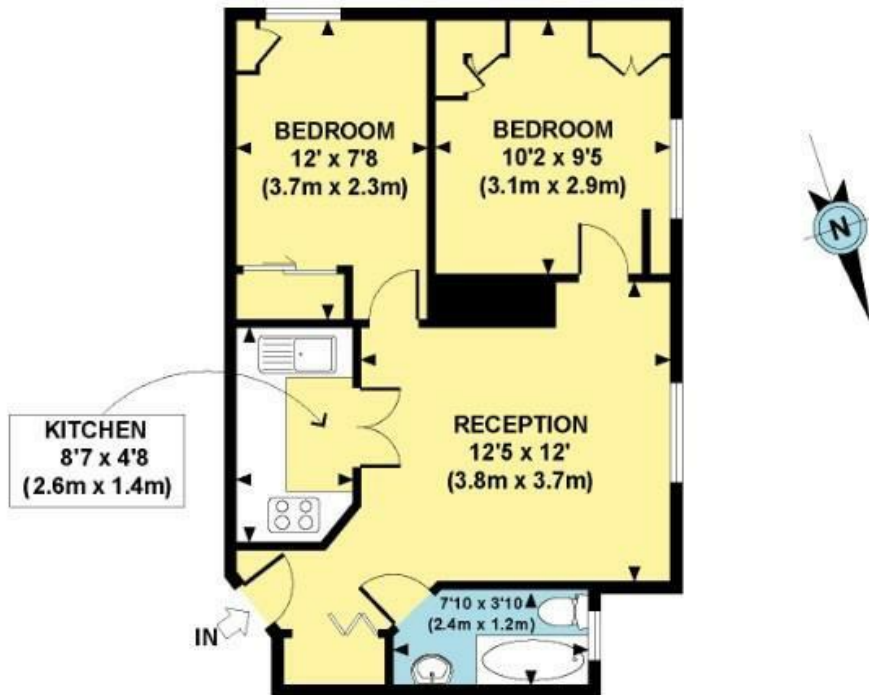


Bright and modern two bedroom apartment  
Communal garden, lift and porter  
Open plan kitchen  
Close to Belsize Park tube

Second floor in purpose built block  
Bright reception  
Communal heating and hot water  
EPC: Rating D, Council Tax: Camden band D

Belsize Park Office 020 7431 3104

## HOLMEFIELD COURT, BELSIZE GROVE NW3



THIRD FLOOR  
GROSS INTERNAL  
FLOOR AREA 475 SQ FT

**APPROX. GROSS INTERNAL FLOOR AREA 475 SQ FT / 44 SQ M**

Whilst every attempt has been made to ensure the accuracy of the floor plan contained here, measurements of doors, windows, rooms and any other items are approximate and no responsibility is taken for any error, omission, or mis-statement. This plan is for illustrative purposes only and should be used as such by any prospective purchaser.

The particulars do not constitute part of an offer or contract. The particulars, including text, photographs and plans, are for the guidance only of prospective purchasers/tenants and must not be relied upon as statements of fact. The descriptions provided therein represent the opinion of the author and whilst given in good faith should not be construed as statements of fact. Nothing in these particulars shall be deemed a statement that the property is in good condition or otherwise or that any services or facilities are in good working order. All measurements are approximate