

Parkheath

Sold on Service

Haverstock Hill NW3

£2,600 PCM (£600 per week) - Camden Band E



Split level 2 double bedroom apartment

2nd and 3rd floors

Bathroom and separate WC

Semi open plan kitchen

Close to all surrounding amenities

Wood floor reception

Communal gardens and passenger lift

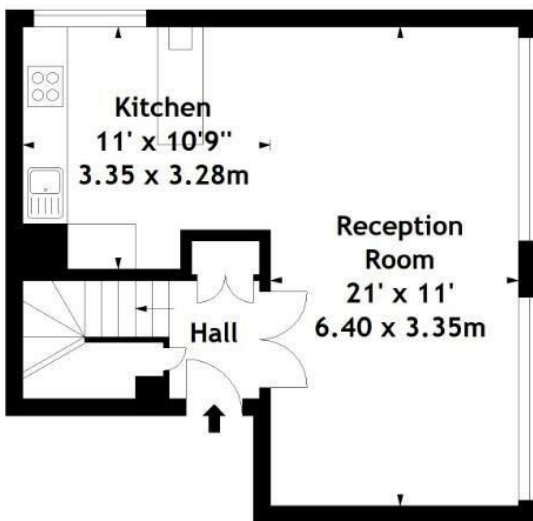
Secure underground parking space

Ideally located for Belsize Park tube

EPC: Rating C, Council Tax: Camden band E

Belsize Park Office 020 7431 3104

Haverstock Hill,
Elaine Court, NW3
Approx. Gross Internal Area
872 Sq Ft - 81.01 Sq M



Second Floor 415 sqft



Third Floor 457 sqft

Measured in accordance with RICS guidelines. Every attempt is made to ensure accuracy, however all measurements are approximate. This floor plan is for illustrative purposes only and is not to scale.
© Datography Ltd 2014
Photographs * Floorplans * Virtual Tours
Tel: 0845 643 4401 www.datography.com

The particulars do not constitute part of an offer or contract. The particulars, including text, photographs and plans, are for the guidance only of prospective purchasers/tenants and must not be relied upon as statements of fact. The descriptions provided therein represent the opinion of the author and whilst given in good faith should not be construed as statements of fact. Nothing in these particulars shall be deemed a statement that the property is in good condition or otherwise or that any services or facilities are in good working order. All measurements are approximate