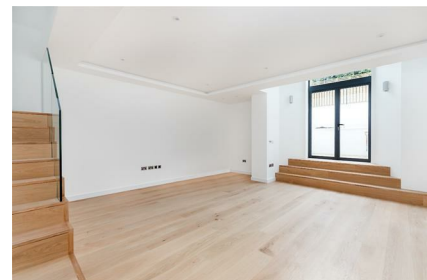


Parkheath

Sold on Service

Glenmore Road NW3
£6,000 PCM (£1385 per week) - Camden Band E



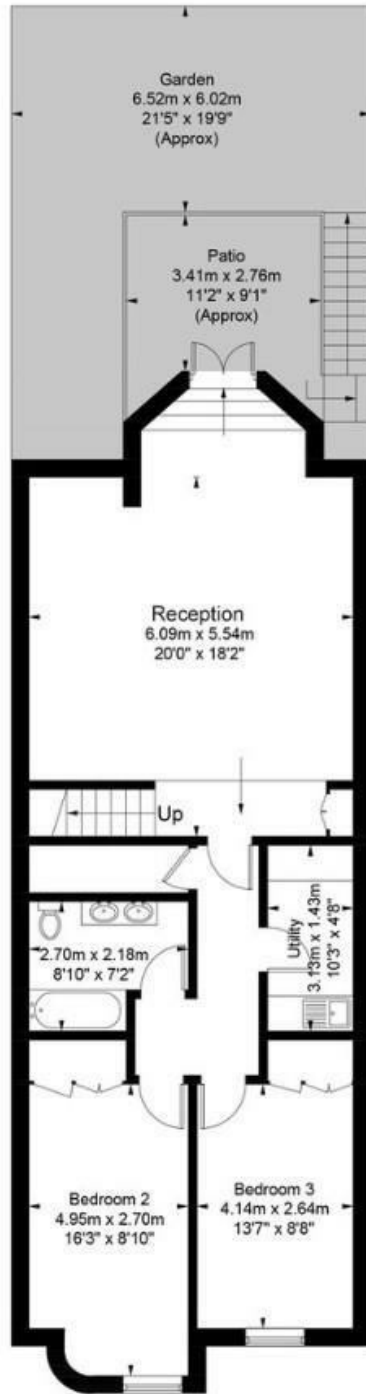
Sensational 3 bedroom garden maisonette
Exquisite reception room
Master bedroom with en suite
Utility room
Moments to the areas shops and cafe's

Private patio garden
High spec kitchen/diner
Family bathroom
Perfectly located for Belsize Park tube
EPC: Rating E, Council Tax: Camden band C

Belsize Park Office 020 7431 3104

Glenmore Road

Approximate Gross Internal Area = 147.3 sq m / 1585 sq ft
(Excluding Void)



Lower Ground Floor



Ground Floor

Illustration for identification purposes only, measurements are approximate,
not to scale. FloorplansUsketch.com © 2018 (ID485853)
ELLIE CLAIRE PHOTOGRAPHY LTD

The particulars do not constitute part of an offer or contract. The particulars, including text, photographs and plans, are for the guidance only of prospective purchasers/tenants and must not be relied upon as statements of fact. The descriptions provided therein represent the opinion of the author and whilst given in good faith should not be construed as statements of fact. Nothing in these particulars shall be deemed a statement that the property is in good condition or otherwise or that any services or facilities are in good working order. All measurements are approximate