

# Parkheath

*Sold on Service*

**Belsize Crescent NW3**  
**£5,400 PCM (£1246 per week) - Camden Band E**



SHORT LET Contemporary 1 bedroom apartment  
1st floor in period conversion  
Fully equipped open plan kitchen  
Luxury bathroom  
Close to Belsize Park and Swiss Cottage tubes

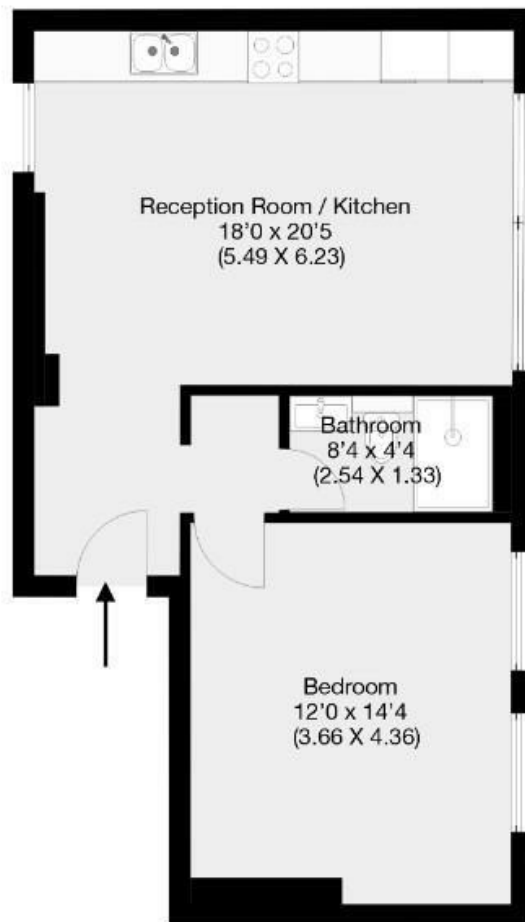
High specification throughout  
Bright reception room  
Bedroom with fitted wardrobes  
Prime Belsize Village location  
Rent inclusive of utilities and council tax

Belsize Park Office 020 7431 3104



## Belsize Crescent, London, NW3

Approximate Gross Internal Area 47.8 sqm / 515 sqft



### First Floor

THIS FLOOR PLAN IS PRODUCED FOR PARKHEATH SUBMITTED BY ARCHIMEDIA web: [www.archi-media.co.uk](http://www.archi-media.co.uk)

Whilst every attempt has been made to ensure the accuracy of the floor plan contained here, measurements of doors, windows and rooms are approximate and no responsibility is taken for any error, omission or misstatement. These plans are for representation purposes only and should be used as such by any prospective buyer or lease. Specifically no guarantee is given on the gross internal floor area of the property if quoted on this plan and any figures given is initial guidance only and should be treated as such.

The particulars do not constitute part of an offer or contract. The particulars, including text, photographs and plans, are for the guidance only of prospective purchasers/tenants and must not be relied upon as statements of fact. The descriptions provided therein represent the opinion of the author and whilst given in good faith should not be construed as statements of fact. Nothing in these particulars shall be deemed a statement that the property is in good condition or otherwise or that any services or facilities are in good working order. All measurements are approximate