

# Parkheath

*Sold on Service*

---

**Thurlow Road NW3**  
**£4,400 PCM (£1015 per week) - Camden Band F**

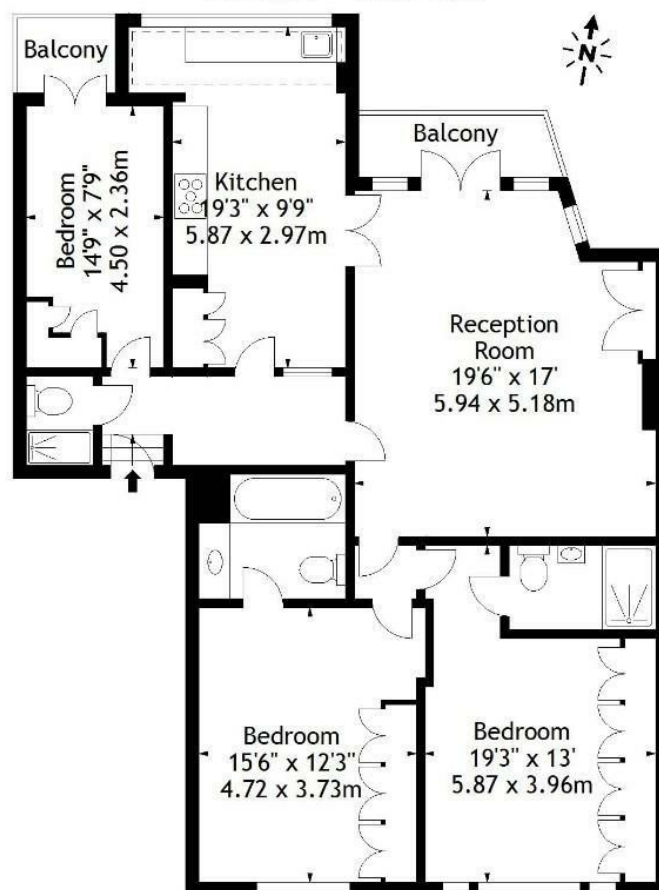


Delightful 3 bedroom, 3 bathroom apartment  
2 private balconies  
Modern kitchen/diner  
Moments to Hampsteads shops and cafes

Entire raised ground floor of period house  
Reception with wood floors  
En suites to master and second bedroom  
EPC: Rating C, Council Tax: Camden band F

Belsize Park Office 020 7431 3104

Thurlow Road, NW3  
Approx. Gross Internal Area  
1275 Sq Ft - 118.45 Sq M



Raised Ground Floor

Measured in accordance with RICS guidelines. Every attempt is made to ensure accuracy, however all measurements are approximate. This floor plan is for illustrative purposes only and is not to scale.  
© Datagraphy Ltd 2014  
Photographs \* Floorplans \* Virtual Tours  
Tel: 0845 643 4401 www.datagraphy.com

The particulars do not constitute part of an offer or contract. The particulars, including text, photographs and plans, are for the guidance only of prospective purchasers/tenants and must not be relied upon as statements of fact. The descriptions provided therein represent the opinion of the author and whilst given in good faith should not be construed as statements of fact. Nothing in these particulars shall be deemed a statement that the property is in good condition or otherwise or that any services or facilities are in good working order. All measurements are approximate