



College Crescent NW3

Parkheath
Sold on Service





College Crescent, NW3, £950,000, Leasehold

Camden Band F

- Extremely spacious 3 double bedroom, 2 reception apartment
- 1388 sq ft of lateral accommodation
- 1st floor in smart mansion block
- Porterage and lift
- Impressive double interconnecting receptions
- 3 generous sized bedrooms and 2 bathrooms
- Separate 16ft kitchen with appliances
- 215 years from 1976
- Ideally located for Belsize Park, Belsize Village, Primrose Hill and Regents Park
- Finchley Road and Swiss Cottage tubes are moments away

Belsize Park/Hampstead
208 Haverstock Hill
NW3 2AG
Sales 020 7431 1234
Lettings 020 7431 3104
nw3@parkheath.com

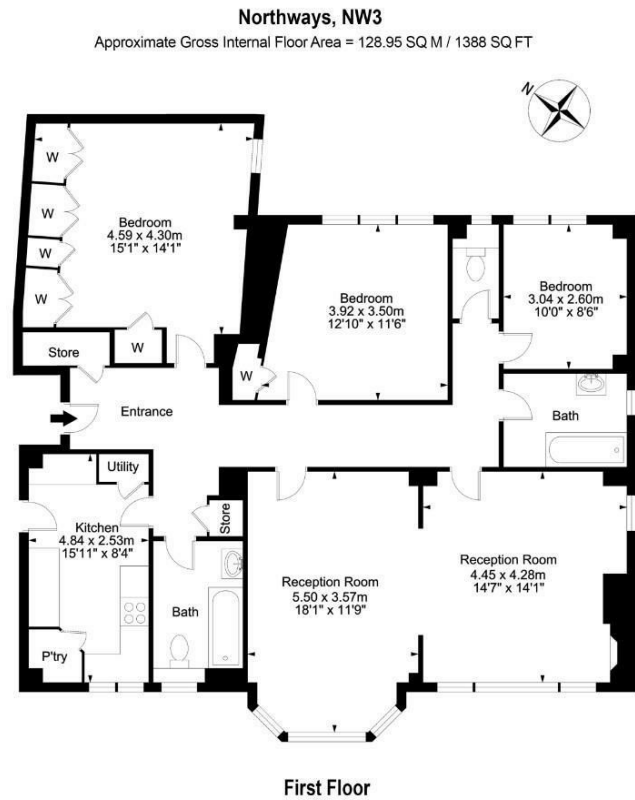
South/West Hampstead
192 West End Lane
NW6 1SG
Sales & Lettings
Tel 020 7794 7111
192@parkheath.com

Kensal Rise
54-56 Chamberlayne Rd
NW10 3JH
Tel 020 8960 4845
kensal@parkheath.com

Property Management
192 West End Lane
NW6 1SG
020 7433 6174
pm@parkheath.com

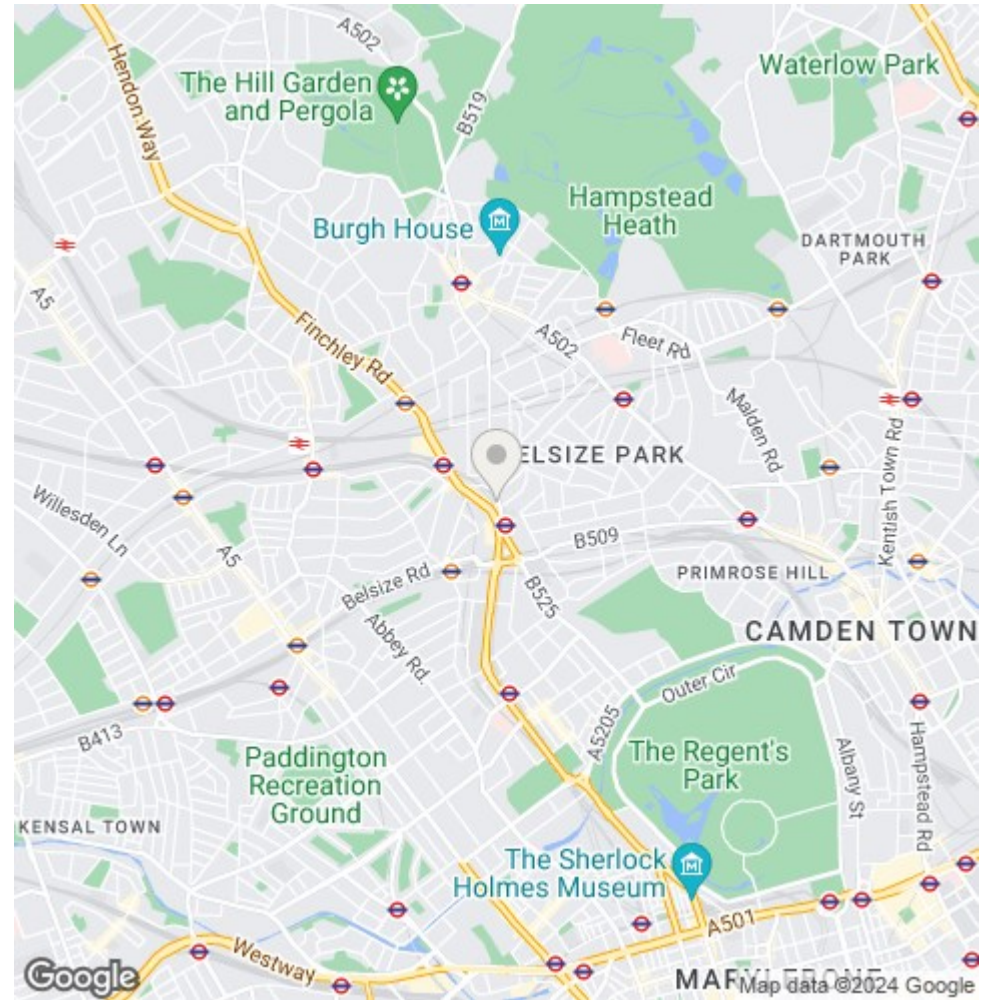
www.parkheath.com

Parkheath
Sold on Service



This plan is for layout guidance only. Drawn in accordance with RICS guidelines. Not drawn to scale unless stated. Windows & door openings are approximate. Whilst every care is taken in the preparation of this plan, please check all dimensions, shapes & compass bearings before marking any decisions reliant upon them.

ELLIE CLAIRE PHOTOGRAPHY LTD
www.ellieclairephotography.com



The particulars do not constitute part of an offer or contract. The particulars, including text, photographs and plans, are for the guidance only of prospective purchasers/tenants and must not be relied upon as statements of fact. The descriptions provided therein represent the opinion of the author and whilst given in good faith should not be construed as statements of fact. Nothing in these particulars shall be deemed a statement that the property is in good condition or otherwise or that any services or facilities are in good working order. All measurements are approximate