

# Parkheath

*Sold on Service*

---

**Antrim Road NW3**

**£3,250 PCM (£750 per week) - Camden Band F**



Well proportioned 3 bedroom apartment

Communal garden & porter

Kitchen/diner with all appliances

3 piece family bathroom

EPC: Rating C, Council Tax: band F

1st floor in mansion block

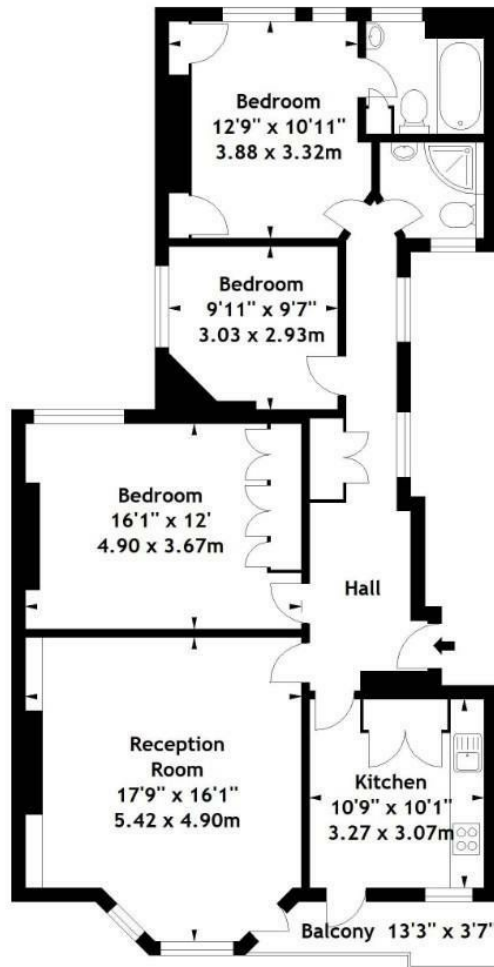
Good size reception with balcony

Master bedroom with ensuite

Minutes to Belsize Park tube

Belsize Park Office 020 7431 3104

Antrim Mansions,  
Antrim Road, NW3  
Approx. Gross Internal Area  
1057 Sq Ft - 98.20 Sq M



First Floor

Measured in accordance with RICS guidelines. Every attempt is made to ensure accuracy, however all measurements are approximate. This floor plan is for illustrative purposes only and is not to scale.

© Datography Ltd 2014  
Photographs \* Floorplans \* Virtual Tours  
Tel: 0845 643 4401 www.datography.com

The particulars do not constitute part of an offer or contract. The particulars, including text, photographs and plans, are for the guidance only of prospective purchasers/tenants and must not be relied upon as statements of fact. The descriptions provided therein represent the opinion of the author and whilst given in good faith should not be construed as statements of fact. Nothing in these particulars shall be deemed a statement that the property is in good condition or otherwise or that any services or facilities are in good working order. All measurements are approximate