



Haverstock Hill NW3

Parkheath
Sold on Service





Haverstock Hill, NW3, Asking Price £675,000, Leasehold

Camden Band E

- Well presented 2 double bedroom apartment
- Arranged over entire 2nd floor, 676sq ft approx
- High contemporary finish
- Wood floors and neutral decor
- Spacious 24ft reception
- Open plan kitchen with appliances
- Fully tiled modern Bathroom and utility cupboard
- 999 years from 2017
- No ongoing chain
- Close to Belsize Park, Chalk Farm and Primrose Hill

Belsize Park/Hampstead
208 Haverstock Hill
NW3 2AG
Sales 020 7431 1234
Lettings 020 7431 3104
nw3@parkheath.com

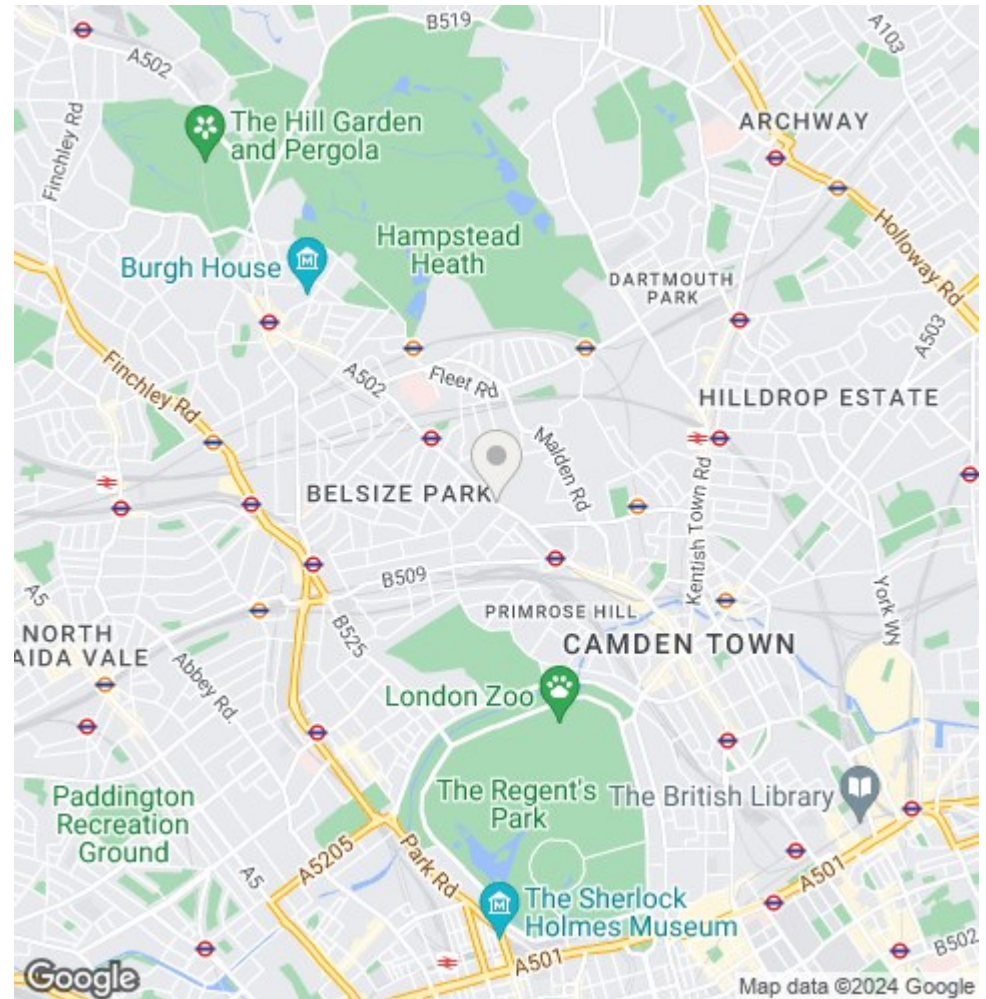
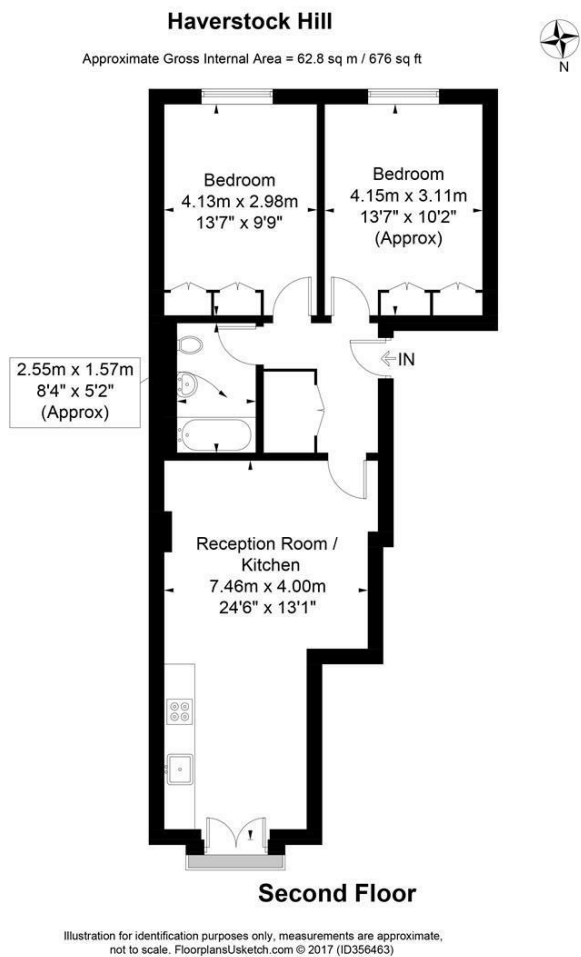
South/West Hampstead
192 West End Lane
NW6 1SG
Sales & Lettings
Tel 020 7794 7111
192@parkheath.com

Kensal Rise
54-56 Chamberlayne Rd
NW10 3JH
Tel 020 8960 4845
kensal@parkheath.com

Property Management
192 West End Lane
NW6 1SG
020 7433 6174
pm@parkheath.com

www.parkheath.com

Parkheath
Sold on Service



The particulars do not constitute part of an offer or contract. The particulars, including text, photographs and plans, are for the guidance only of prospective purchasers/tenants and must not be relied upon as statements of fact. The descriptions provided therein represent the opinion of the author and whilst given in good faith should not be construed as statements of fact. Nothing in these particulars shall be deemed a statement that the property is in good condition or otherwise or that any services or facilities are in good working order. All measurements are approximate