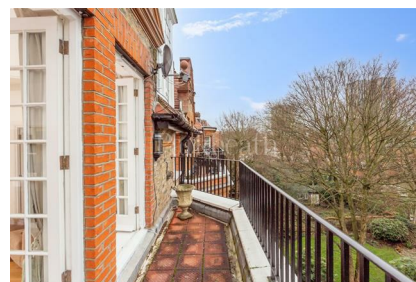


Parkheath

Sold on Service

Eton Avenue NW3

£3,300 PCM (£762 per week) - Camden Band H



Delightful 2/3 bedroom maisonette
2nd and 3rd floors in period conversion
High quality kitchen with all appliances
Fitted wardrobes and en suite bathroom
Third bedroom/study with en suite shower room


2 terraces
Wood floor reception with doors to balcony
Master bedroom with balcony access
Second double bedroom with en suite bathroom
Guest wc

Belsize Park Office 020 7431 1234

Eton Avenue

Approximate Gross Internal Area = 101.3 sq m / 1090 sq ft



 = Reduced headroom below 1.5m / 5'0"

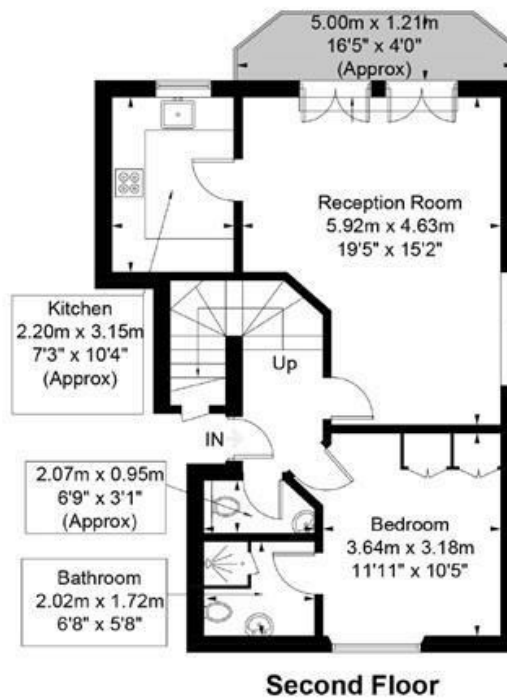
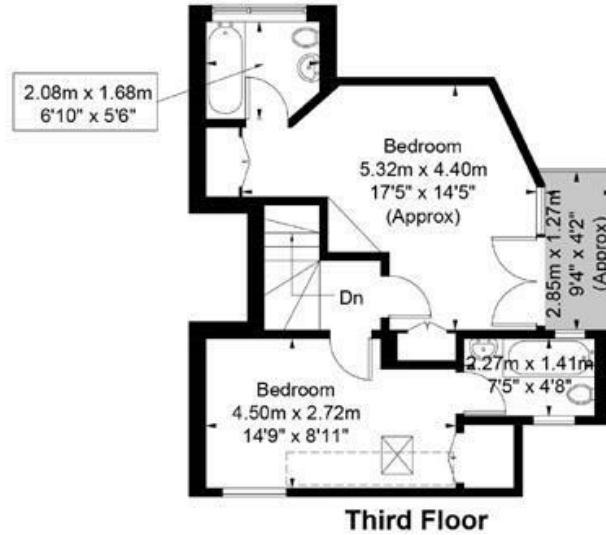


Illustration for identification purposes only, measurements are approximate, not to scale. FloorplansUsketch.com © 2018 (ID459725)
ELLIE CLAIRE PHOTOGRAPHY LTD

The particulars do not constitute part of an offer or contract. The particulars, including text, photographs and plans, are for the guidance only of prospective purchasers/tenants and must not be relied upon as statements of fact. The descriptions provided therein represent the opinion of the author and whilst given in good faith should not be construed as statements of fact. Nothing in these particulars shall be deemed a statement that the property is in good condition or otherwise or that any services or facilities are in good working order. All measurements are approximate