

Parkheath

Sold on Service

Parkhill Road NW3

£3,250 PCM (£750 per week) - Camden Band E



Stunning 2 bedroom, 2 bathroom maisonette
Stripped wood flooring
Contemporary kitchen with quartz worktop
Off street parking

Full width balconies to reception and bedroom
Close to Belsize Park tube
Main bedroom with ensuite shower room
Walking distance to The Heath

Belsize Park Office 020 7431 3104

Parkhill Road



Approximate Gross Internal Area = 73.7 sq m / 793 sq ft

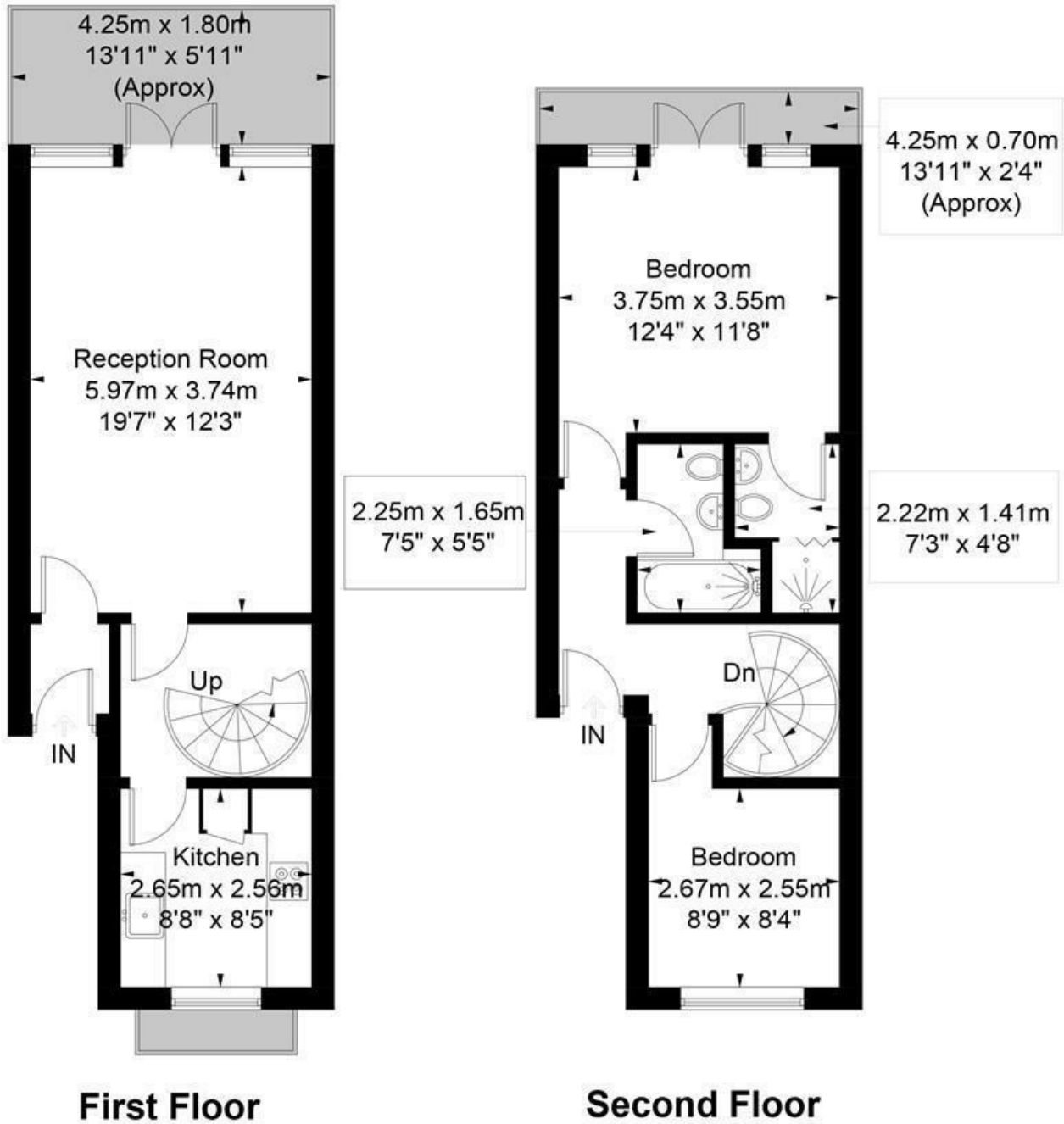


Illustration for identification purposes only, measurements are approximate, not to scale. FloorplansUsketch.com © 2019 (ID544332)
ELLIE CLAIRE PHOTOGRAPHY LTD

The particulars do not constitute part of an offer or contract. The particulars, including text, photographs and plans, are for the guidance only of prospective purchasers/tenants and must not be relied upon as statements of fact. The descriptions provided therein represent the opinion of the author and whilst given in good faith should not be construed as statements of fact. Nothing in these particulars shall be deemed a statement that the property is in good condition or otherwise or that any services or facilities are in good working order. All measurements are approximate