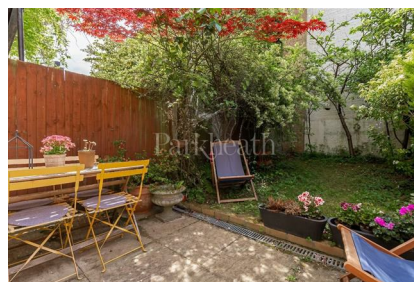


Parkheath

Sold on Service

Byron Mews NW3

£5,350 PCM (£1235 per week) - Camden Band G



Stylish 4 bedroom mews house
Gated development
Bi-folding doors to garden
Master with ensuite
Moments to Hampstead Heath

Parking and Garden
Reception with ceramic tiled floor
High quality kitchen
Family bathroom + guest wc
Close to transport links

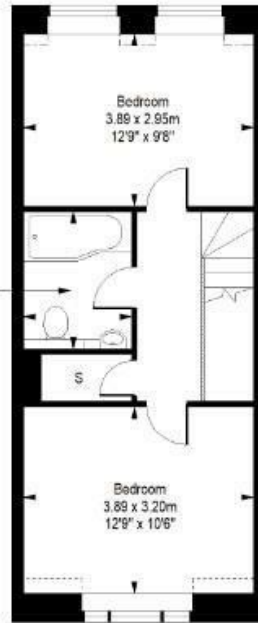
Belsize Park Office 020 7431 3104

**Byron Mews,
South End Green, NW3**

Approximate Gross Internal Area = 115.0 Sq m / 1238 Sq ft
(Including Restricted Height)
Approximate Gross Internal Area = 113.2 Sq m / 1219 Sq ft
(Excluding Restricted Height)



Ground Floor



Second Floor



First Floor

This plan is for layout guidance only. Drawn in accordance with RICS guidelines. Not drawn to scale unless stated. Windows & door openings are approximate. Whilst every care is taken in the preparation of this plan, please check all dimensions, shapes & compass bearings before marking any decisions reliant upon them.

ELLIE CLAIRE PHOTOGRAPHY LTD
www.ellieclairephotography.com

The particulars do not constitute part of an offer or contract. The particulars, including text, photographs and plans, are for the guidance only of prospective purchasers/tenants and must not be relied upon as statements of fact. The descriptions provided therein represent the opinion of the author and whilst given in good faith should not be construed as statements of fact. Nothing in these particulars shall be deemed a statement that the property is in good condition or otherwise or that any services or facilities are in good working order. All measurements are approximate